



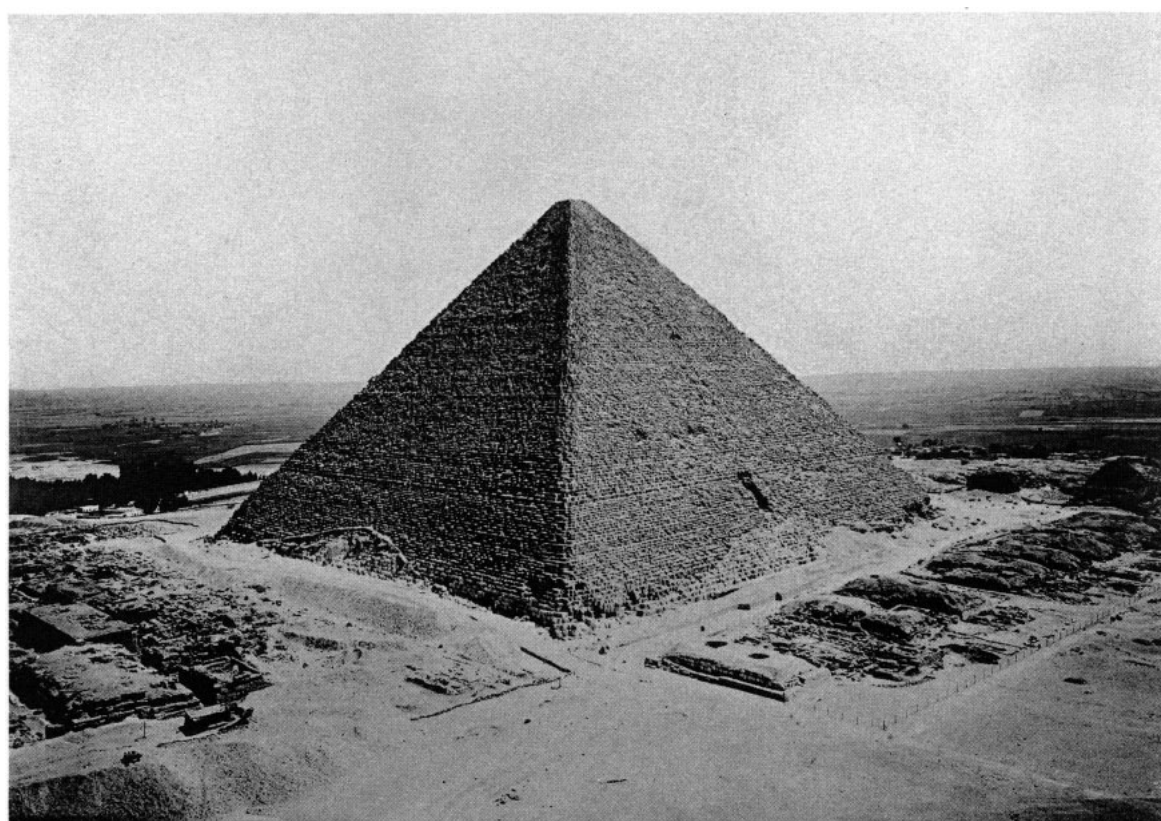
*a.* Pyramid promontory viewed from NE: 1905.



*b.* Pyramids, looking NNE: 1905.



*a.* Pyramids of Cheops and Chephren viewed from NW: 1914.



*b.* Cheops pyramid and Cemetery G I S, looking NE from Chephren pyramid: 1932.



*a.* Second Pyramid and temple and western side of Cheops-Chephren quarry seen from Cheops pyramid: 1913.



*b.* Sphinx and eastern side of Cheops-Chephren quarry, from Cheops pyramid: 1932.





*a.* Giza Necropolis and Cheops-Chephren quarry viewed from SE: 1937.



*b.* Cheops-Chephren quarry as excavated by Prof. Selim Bey Hassan, seen from Cheops pyramid: 1937.



*a.* Eastern Field before excavation: 1913.



*b.* Eastern Field looking east: 1924.



*a.* Eastern Field including the great Sphinx, looking ESE: 1932.



*b.* Cem. G 7000, nucleus cemetery, looking ESE: 1932.





*a.* Western Field, looking west from Cheops pyramid: 1932.



*b.* Middle and northern parts of Western Field: 1932.

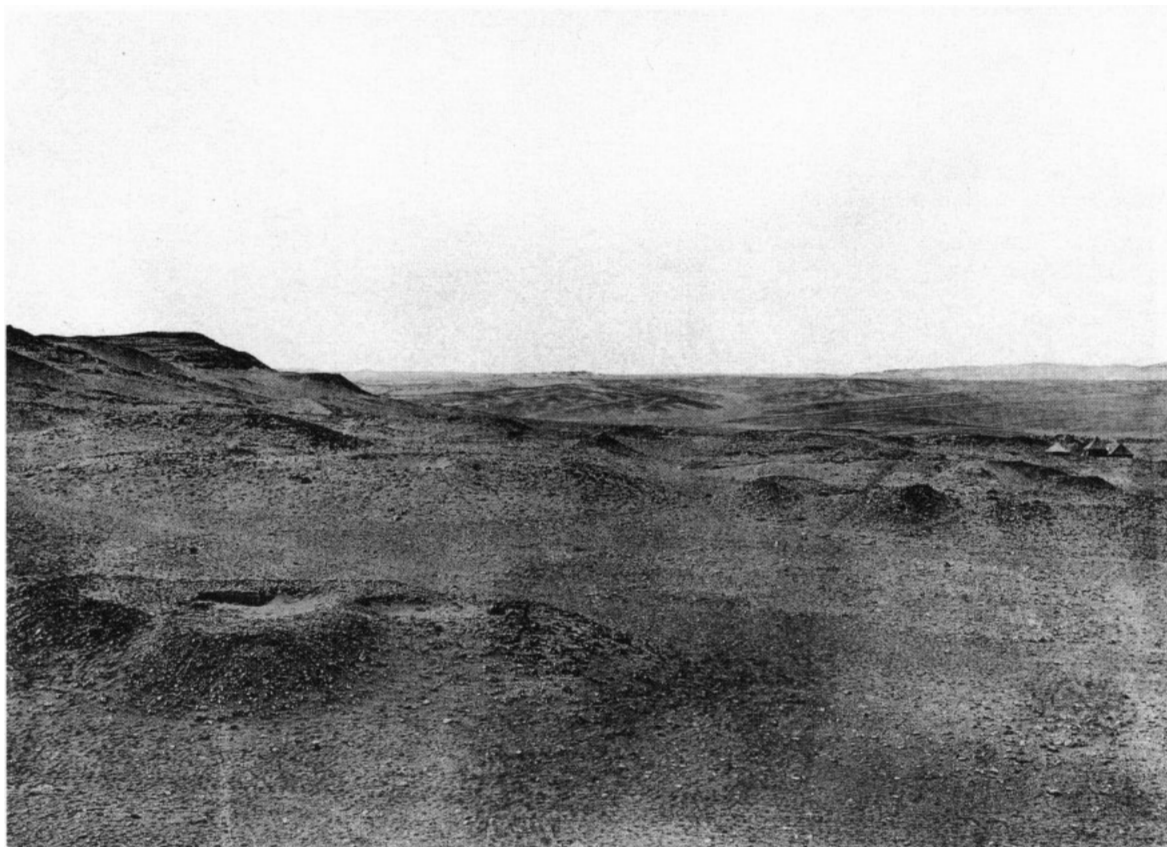


*a.* Western Field, looking NNE from Second Pyramid: 1932.



*b.* Western Field, southern part, looking west from First Pyramid: 1932.





*a.* Cem. G 1000–1200 before excavation, looking west from top of G 2000: 1904.



*b.* Cem. G 1200 after excavation, looking west from top of G 2000: 1906.



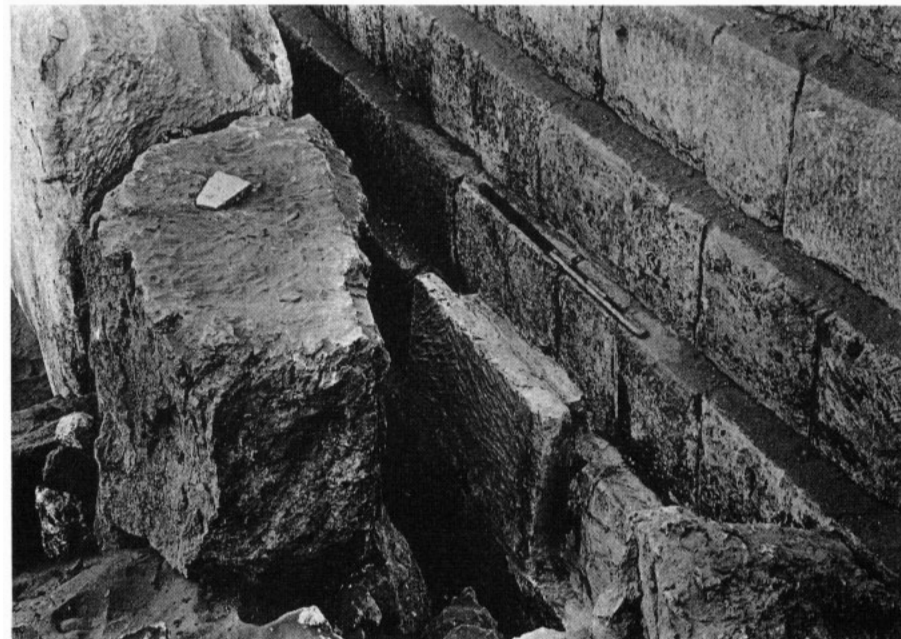
*a.* Cem. G 1200, Mastabas in southern row, looking ESE: 1906.



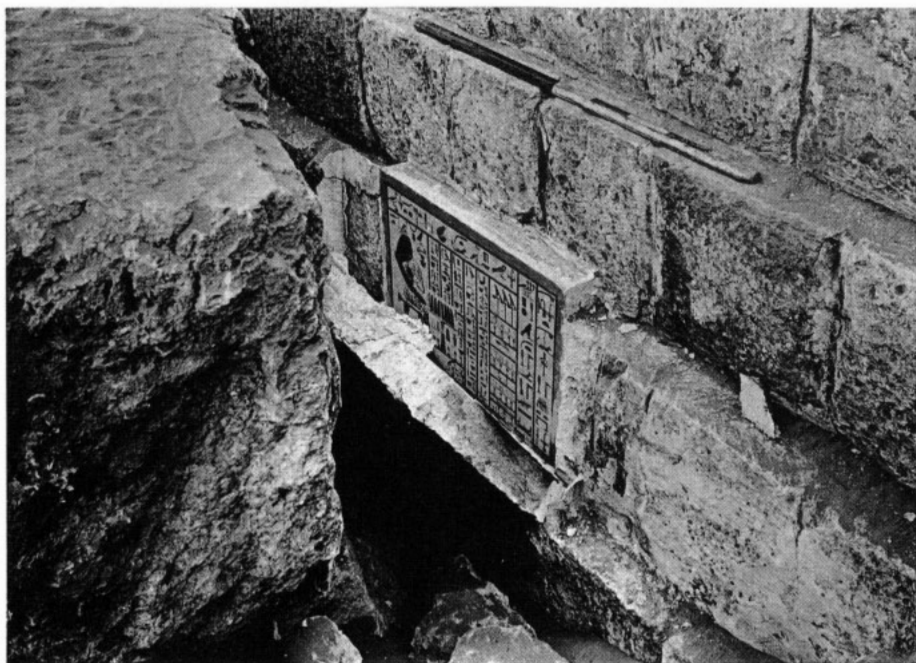
*b.* Cem. G 1200, Avenue between middle and southern row of mastabas, looking east: 1906.



*a.* G 1201, Chapel, looking north: 1905.



*b.* G 1201, Back of west wall of stone chapel and slab-stela in core wall covered by unscribed slab, looking down to south: 1905.



*c.* G 1201, Covering slab pulled forward to show slab-stela.

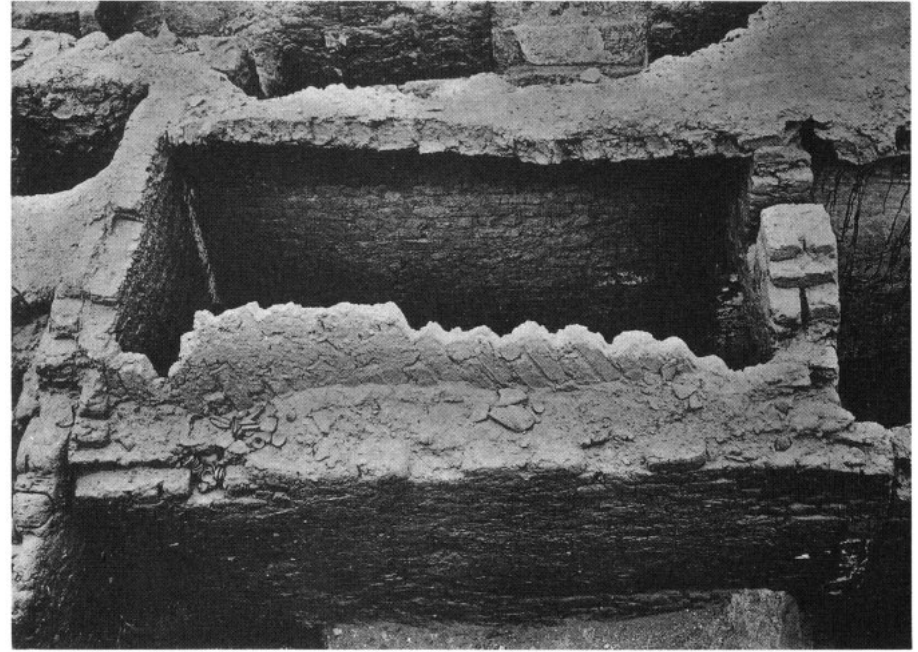


*d.* G 1201, Slab-stela in place with covering slab removed.





*a.* G 1203, Exterior c.b. chapel of type (1 a), looking NNW: 1904-5.



*b.* G 1203, Chapel, looking down to west on top of walls of room C: 1904-5.



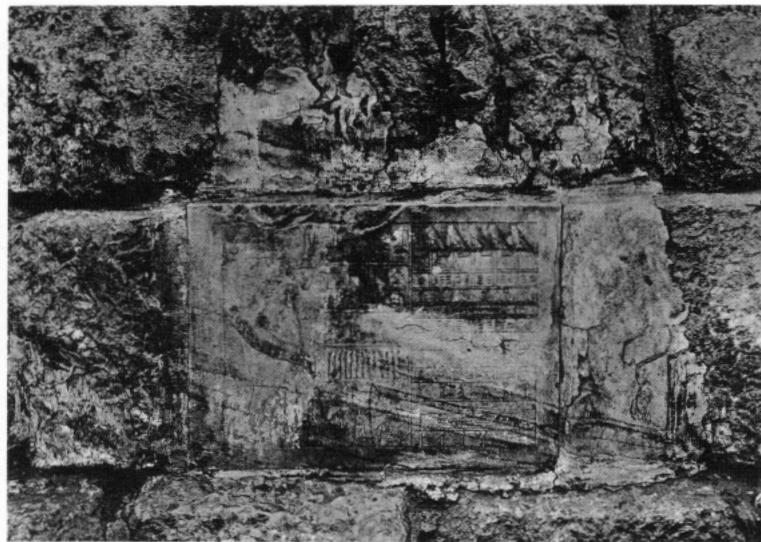
*c.* G 1205, Exterior c.b. chapel of type (1 a), looking north: 1904-5.



*d.* G 1205, Offering-room, looking south, showing mud platform and statue basis: 1904-5.



*a.* G 1205, Chapel, looking west, slab-stela in place: 1904-5.



*b.* G 1205, Slab-stela in emplacement.



*c.* G 1207, Exterior c.b. chapel of type (1 a), looking west, slab-stela in place: 1904-5.



*d.* G 1207, Offering-room, looking south, showing mud platform: 1904-5.



*e.* G 1207, Slab-stela in place.





*a.* G 1209, Exterior c.b. chapel without slab-stela, type (1 a), looking west: 1905.



*b.* G 1223, Exterior c.b. chapel, looking south: 1906.



*c.* G 1223, Exterior chapel, room b, looking SW: 1906.



*d.* G 1223, Interior stone chapel, looking south: 1906.



*e.* G 1223, Whole chapel, looking west: 1906.



*f.* G 1223, Slab-stela in place in retaining wall of core: 1904-5.





a. G 1223, Enlargement of mastaba on west and south, looking NE from G 1205: 1906.



b. G 1225, Chapel, looking SW, unfinished interior chapel of type (3) and final c.b. chapel: 1904-5.



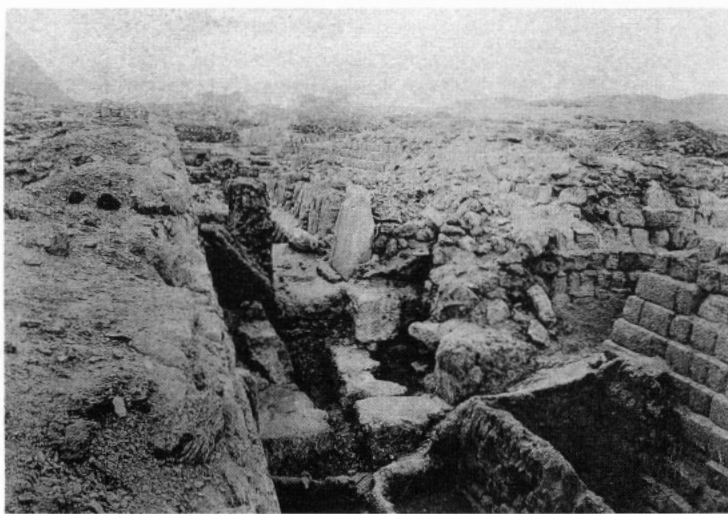
c. Between G 1223 and 1225, looking north, showing contact of enlargements of two mastabas: 1904-5.



d. G 1225 annex, Subsidiary north chapel, looking NW: 1906.



e. G 1225, Casing of west wall, looking SE: 1906.



f. G 1225 annex, looking SW from top of 1233: 1934.