



*a.* G 1227, Exterior c.b. chapel of type (1 a), looking SW: 1906.



*b.* G 1227, Chapel, slab-stela in place, looking WSW: 1904-5.



*c.* G 1227, Small mastabas built against east face, looking SSW: 1905-6.



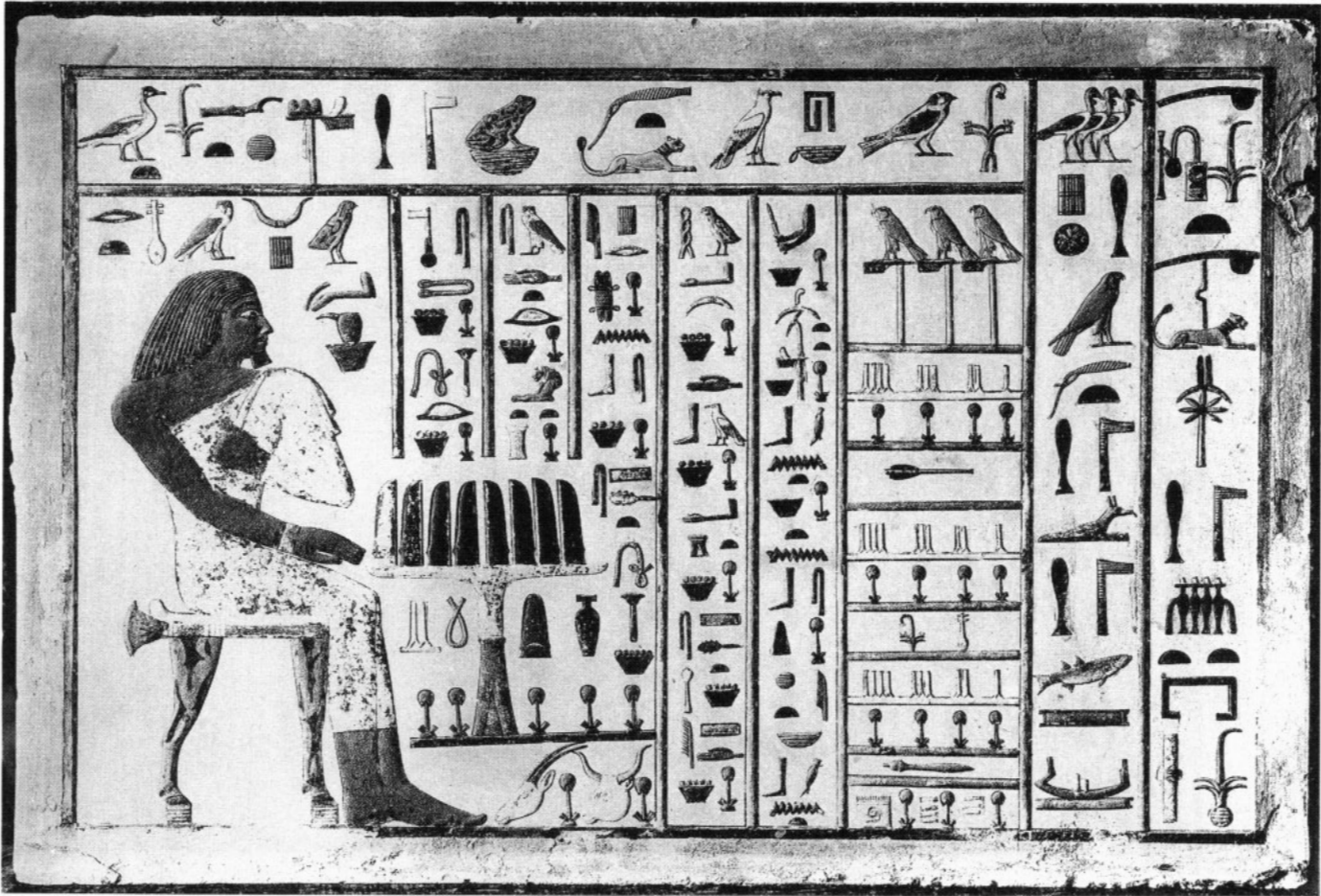
*d.* G 1227 Annex and subsidiary north chapel, looking west: 1934.



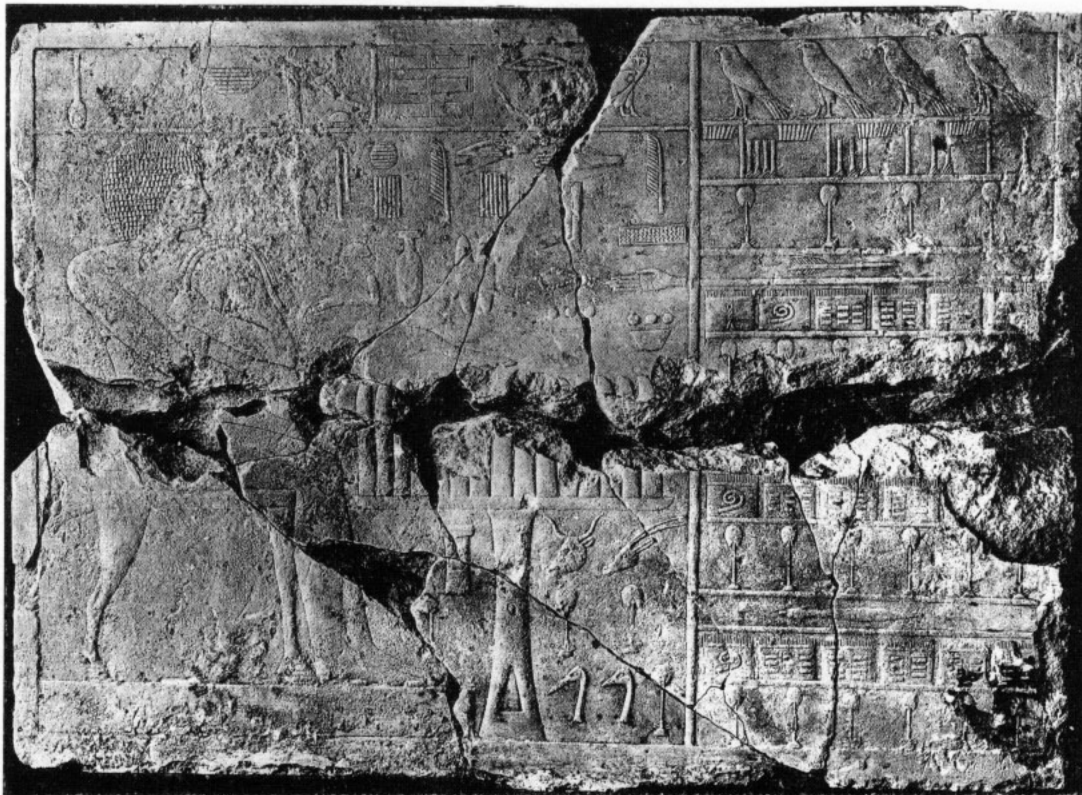
*e.* G 1235, Exterior c.b. chapel of type (1 a), looking SSW: 1905.



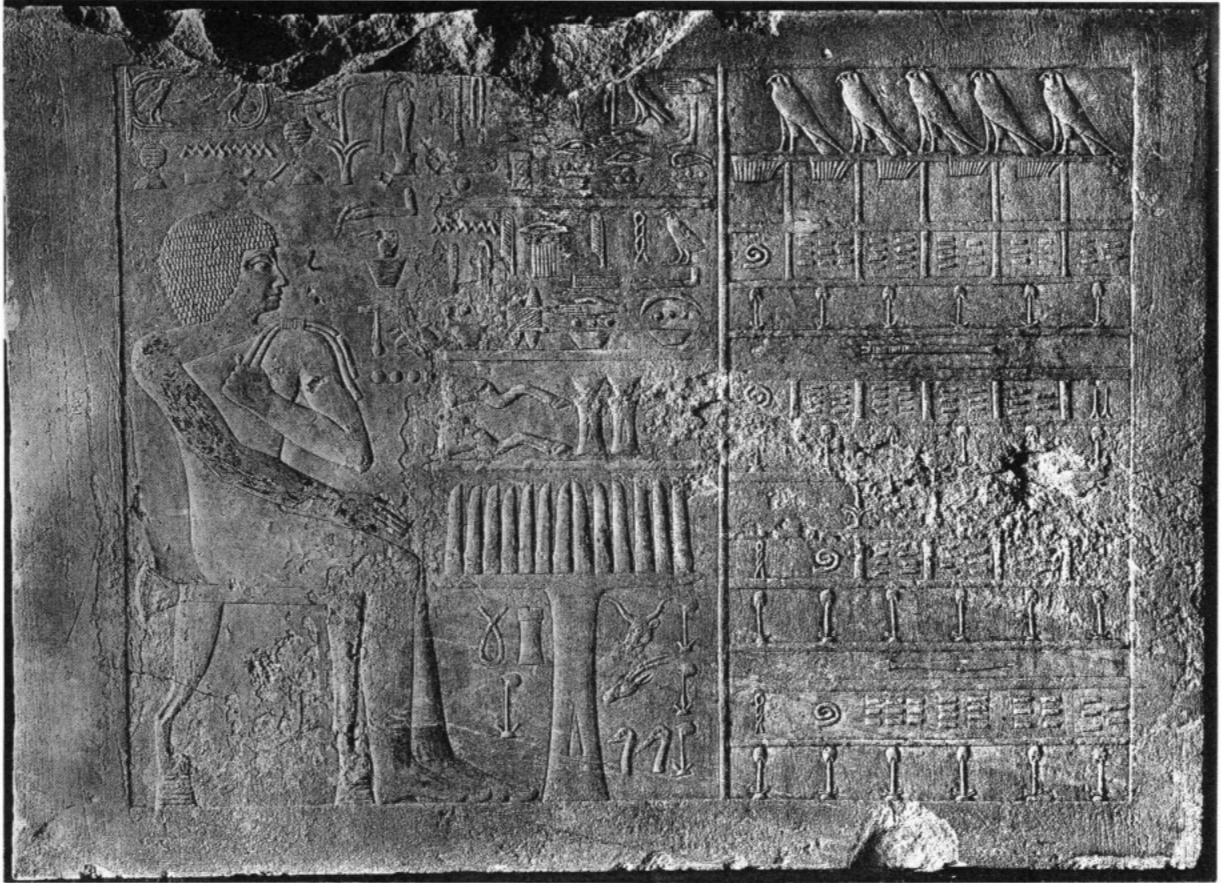
*f.* G 1235, Slab-stela in place in chapel, also roofing slabs of intrusive burial chamber: 1905.



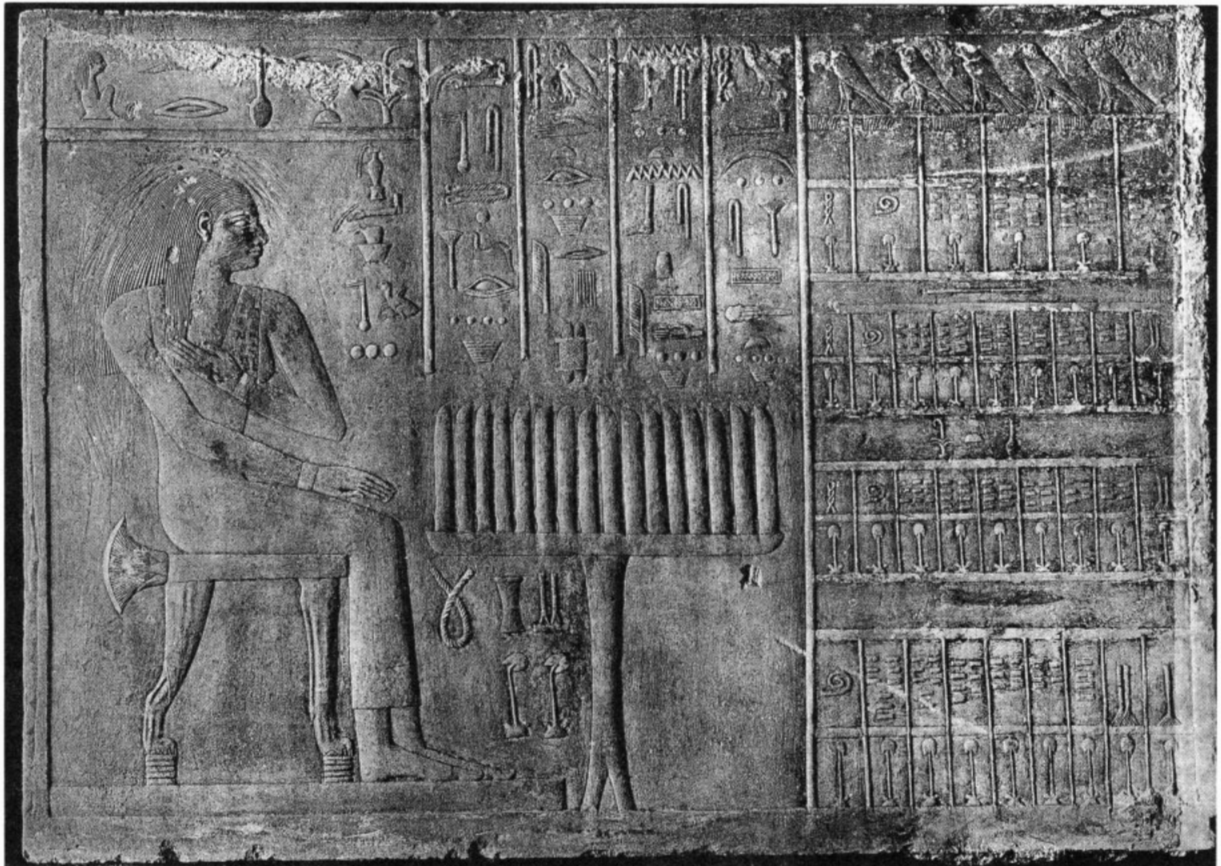
a. G 1201, Slab-stela of Prince Wepemnofret.



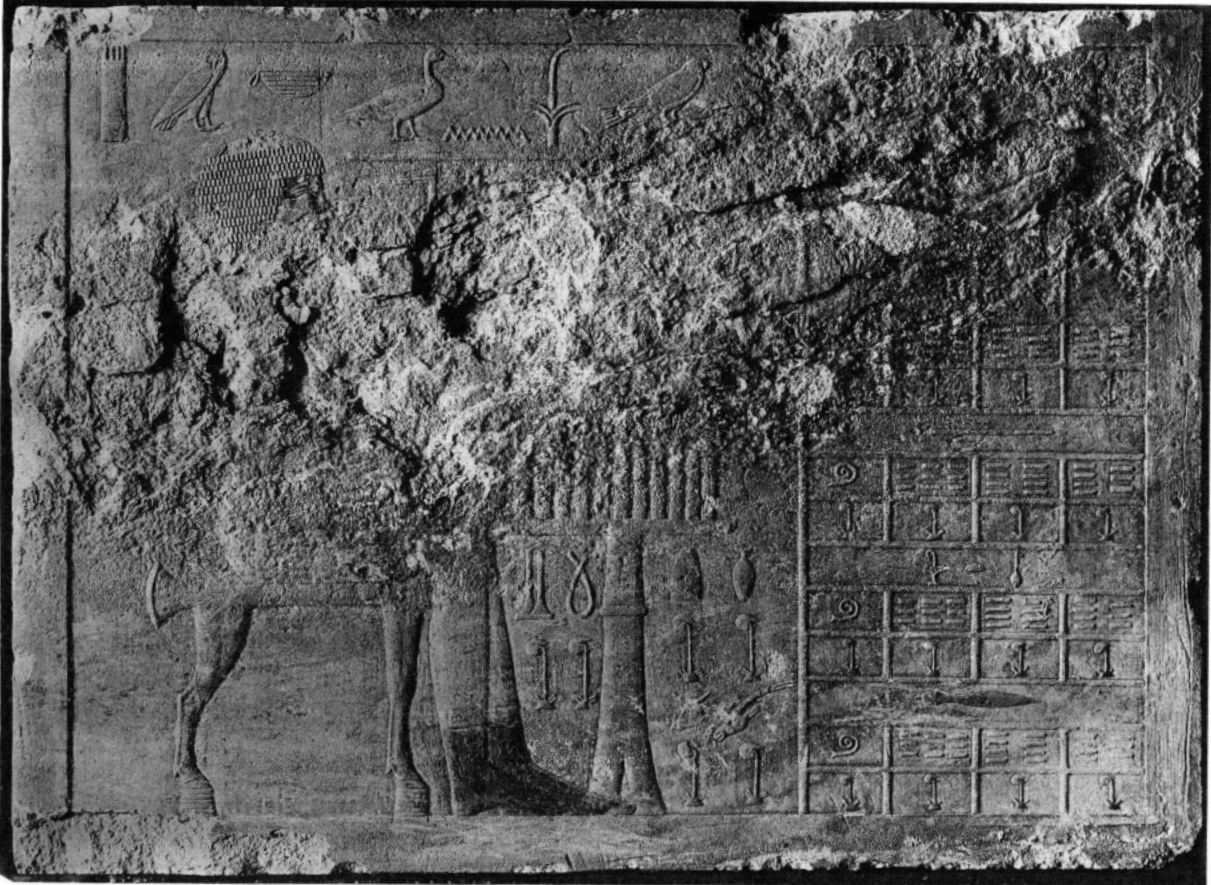
b. G 1203, Broken slab-stela of Kanofer.



*a.* G 1205, Slab-stela of Khufuw-nekht.



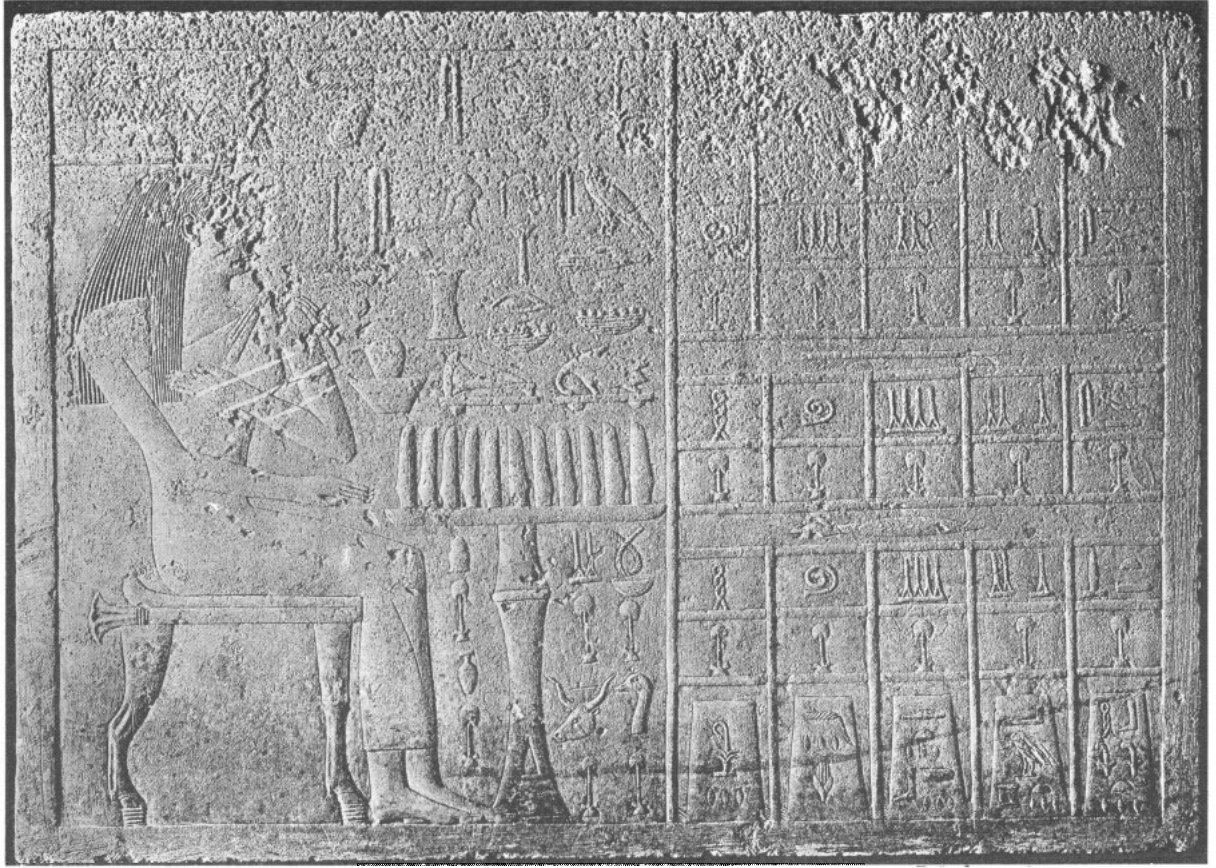
*b.* G 1207, Slab-stela of Nofret.



a. G 1223, Slab-stela of Prince Ka-m-aha.



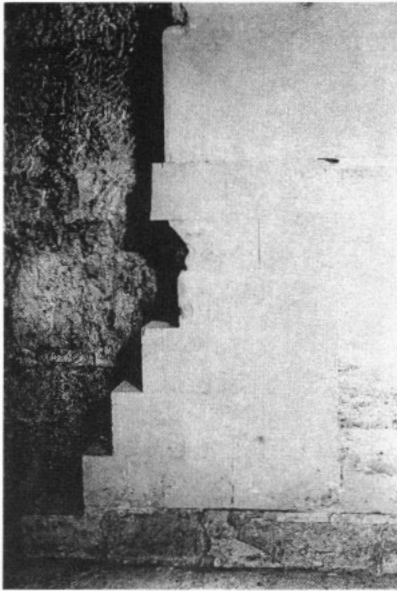
b. G 1225, Slab-stela of Princess Nefert-yabet, in the collection of Mr. Atherton Curtis in Paris.



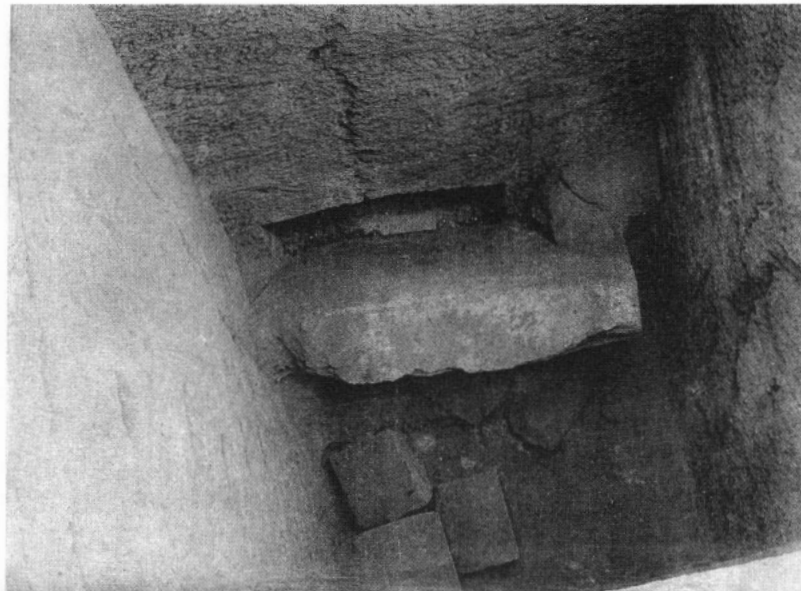
*a.* G 1227, Slab-stela of Sethy-hekenet.



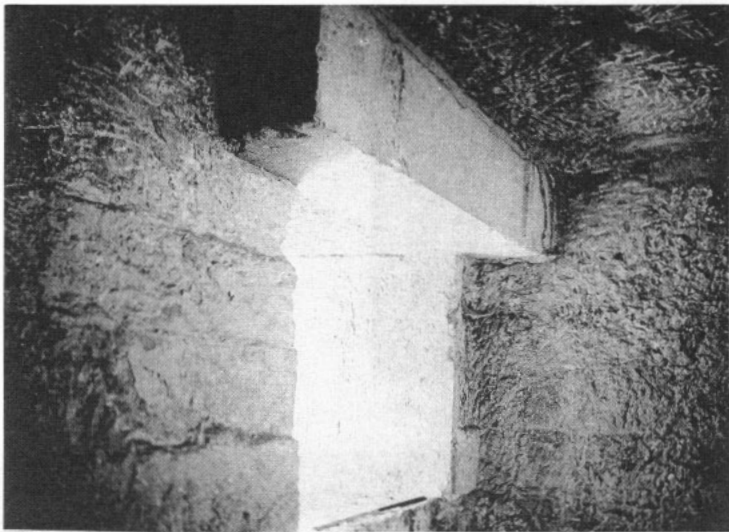
*b.* G 1235, Slab-stela of Yeni.



*a.* G 1201, Burial-chamber of type 1 a1, white limestone lining on north wall west of doorway: 1906.



*b.* G 1203, Shaft A, looking down shaft, to show portcullis slab and remains of interior blocking: 1936.



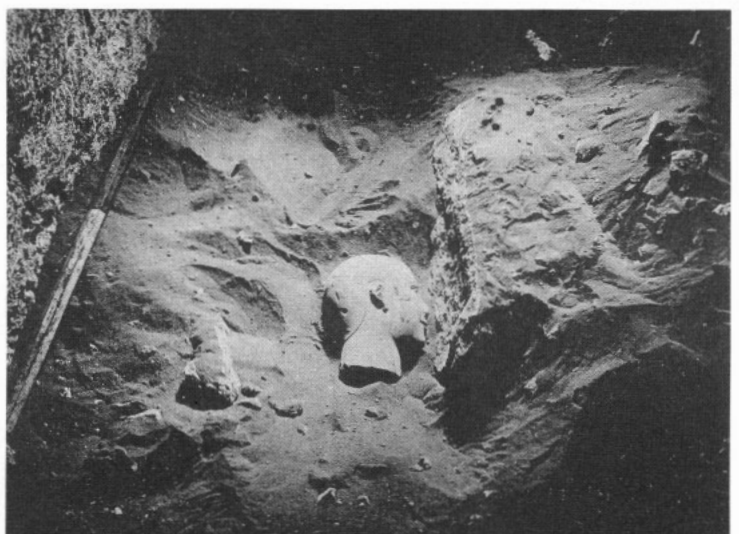
*c.* G 1203 A, Chamber, remains of lining around doorway, looking NE: 1905.



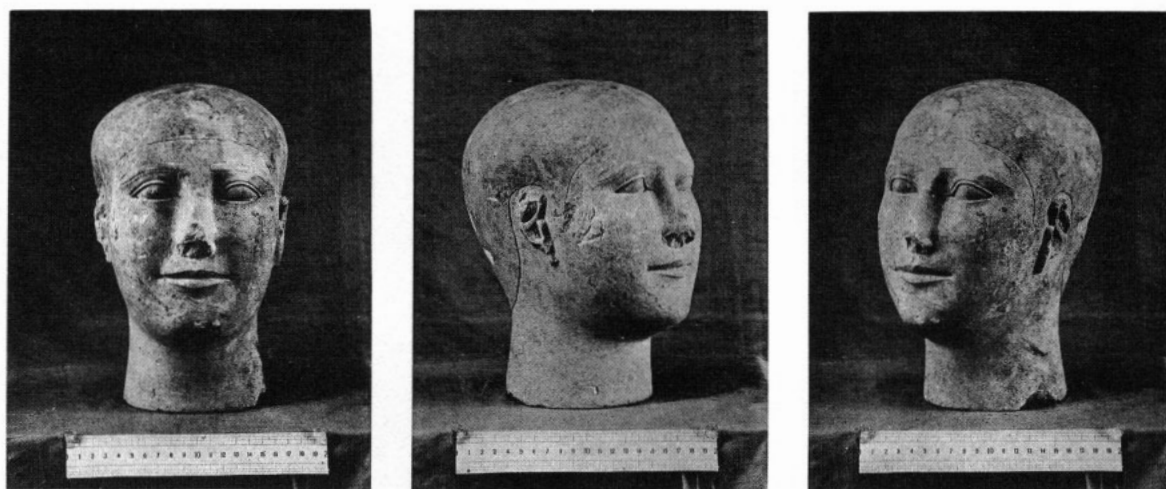
*d.* G 1203 A, Canopic pit in SE corner: 1905.



*e.* G 1203 A, Red construction lines and chisel marks on ceiling: 1905.



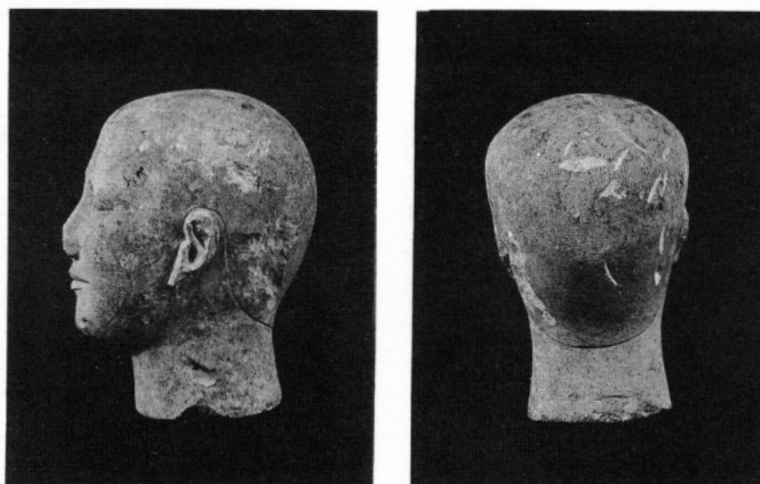
*f.* G 1203 A, Reserve head as found, looking south: 1904-5.



a.

b.

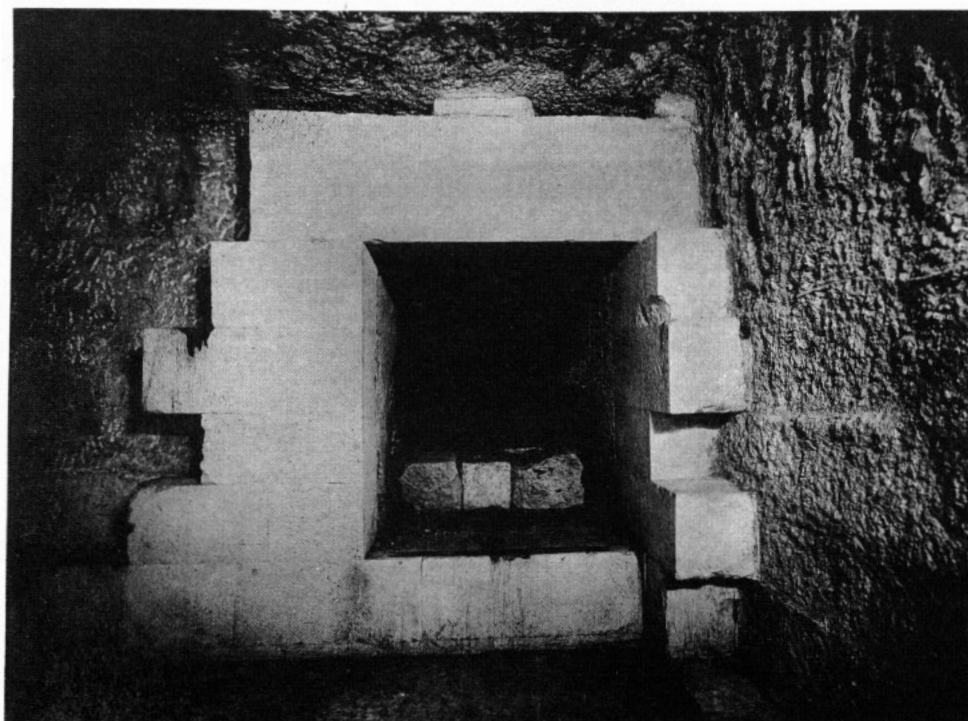
c.



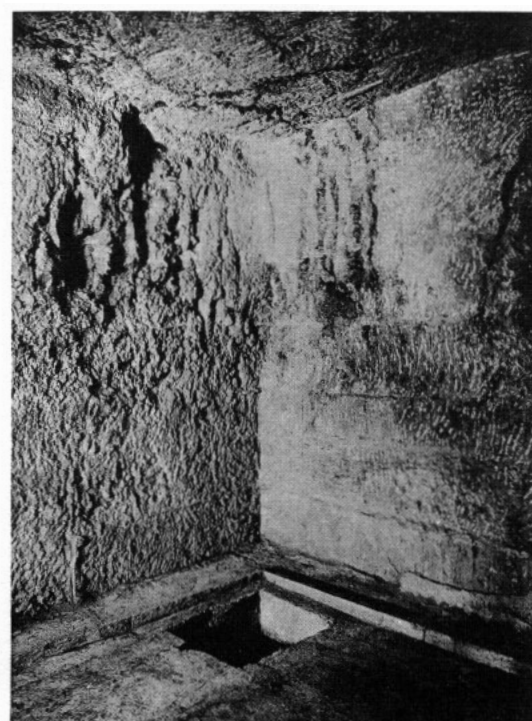
d.

e.

a-e. G 1203, Reserve head of Kanofer.



f. G 1205, Burial-chamber, lining around doorway, looking north: 1934.



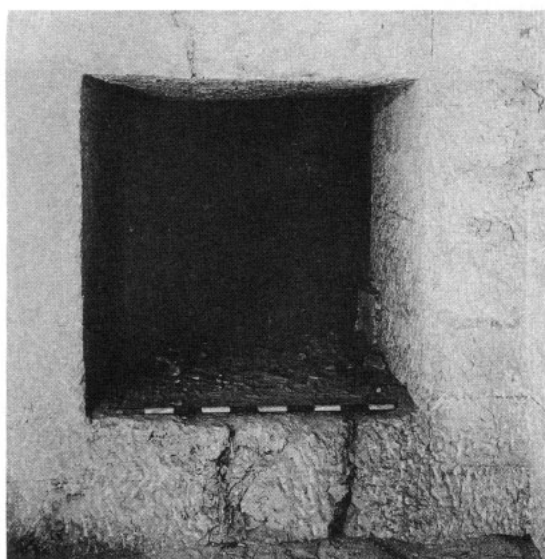
g. G 1205, SE corner of burial-chamber: 1934.



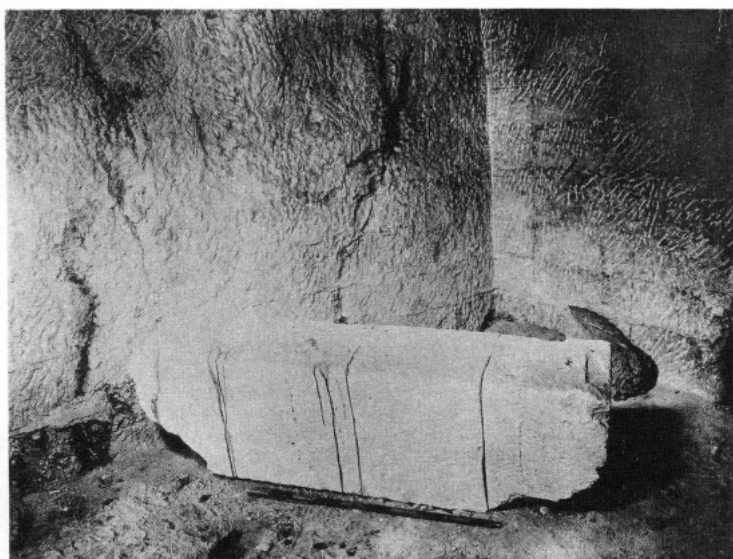
*a.* G 1223, Mouth of shaft A: 1905.



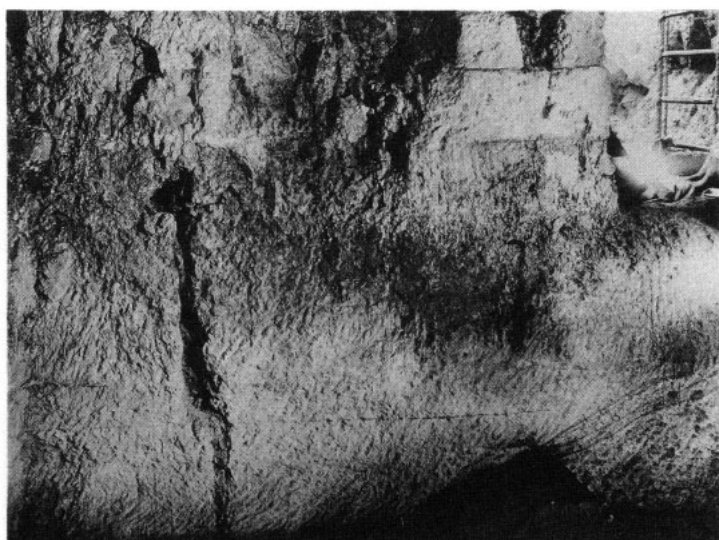
*b.* G 1223 A, SE corner of chamber stripped of lining: 1905.



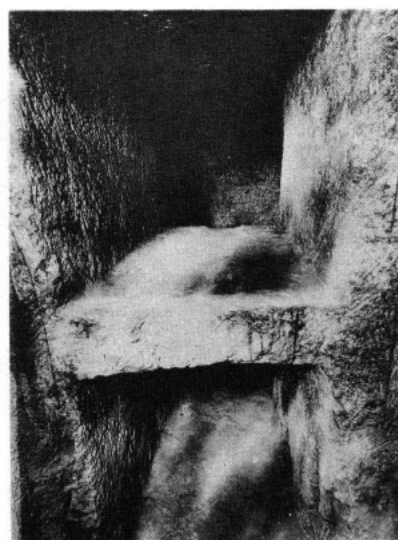
*c.* G 1225 A, Chamber, entrance doorway, looking north: 1936.



*d.* G 1225 A, SE corner of chamber, stripped walls and architrave from over doorway: 1934.

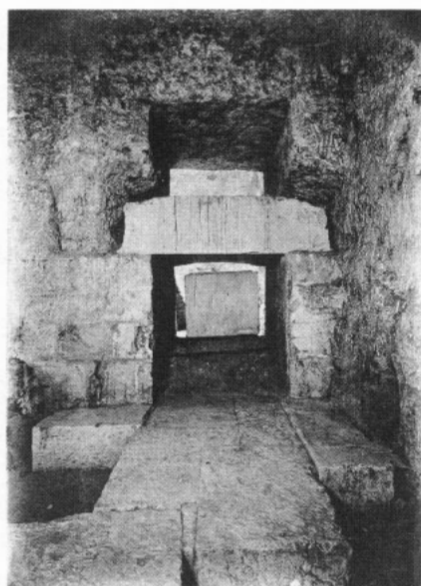


*e.* G 1227 A, North wall of chamber, opening of passage, plaster marks and red line on stripped wall: 1932.



*f.* G 1233 A, 'Window' over doorway, opening in shaft, looking south: 1936.

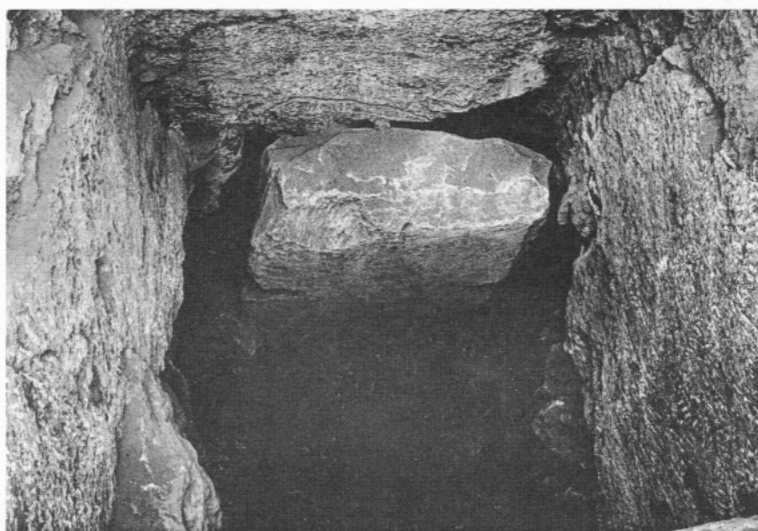




*a.* G 1235 A, North wall of chamber, remains of pavement, and 'window' above doorway: 1934.



*b.* G 1235 A, looking down shaft to south; coffin half drawn out of chamber into shaft; roofing of passage: 1934.



*c.* G 1233 annex, looking down shaft to south, portcullis slab in place: 1905.



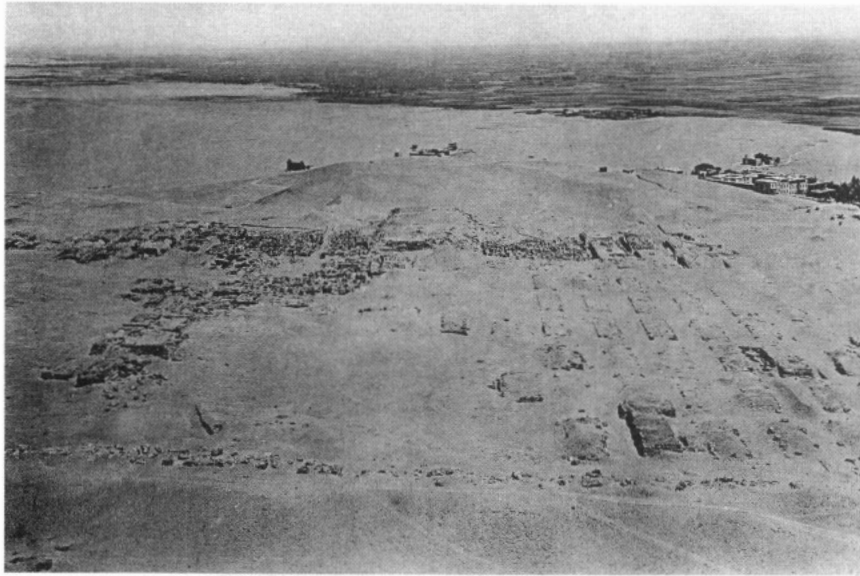
*d.* G 1233 annex, Shaft looking south, interior c.b. blocking of passage: 1905.



*e.* G 1233 annex, Collapsed wooden coffin and two jugs in chamber: 1905.



*f.* G 1233 annex, Skeleton on floor of coffin: 1905.



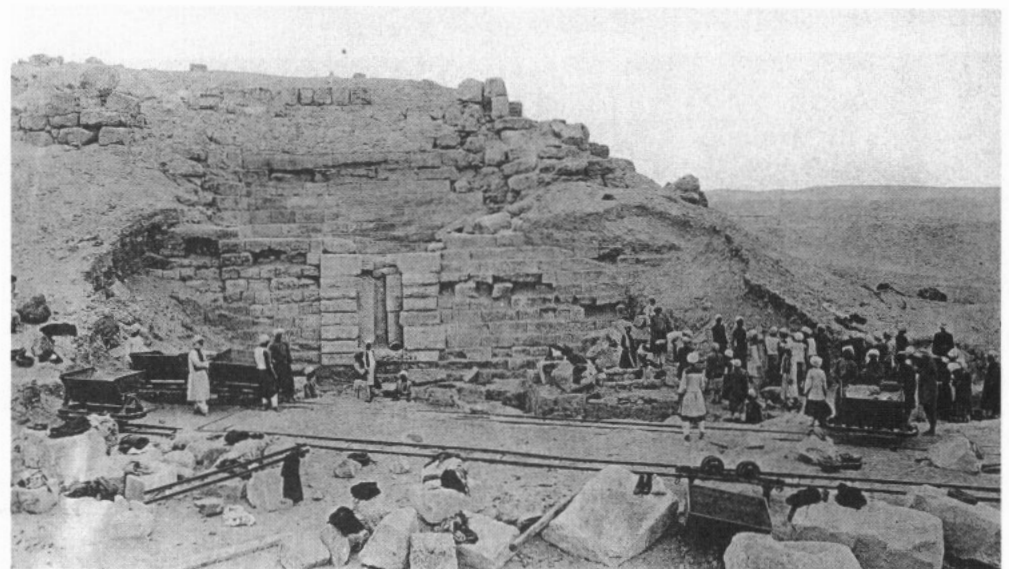
*a.* Mastaba G 2000 and Cem. G 2100, looking north from Chephren pyramid: 1905-6.



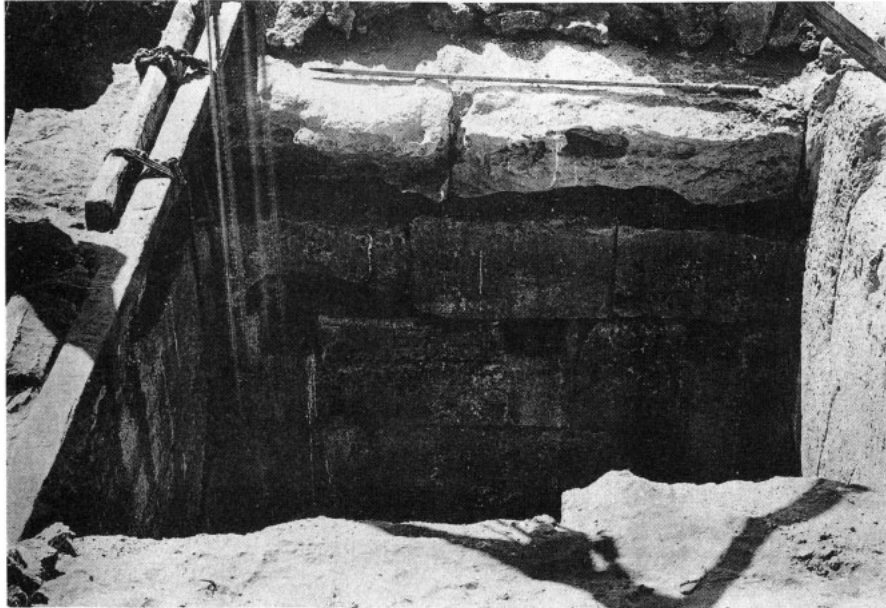
*b.* G 2000, Eastern face, middle part with chapel partly excavated.



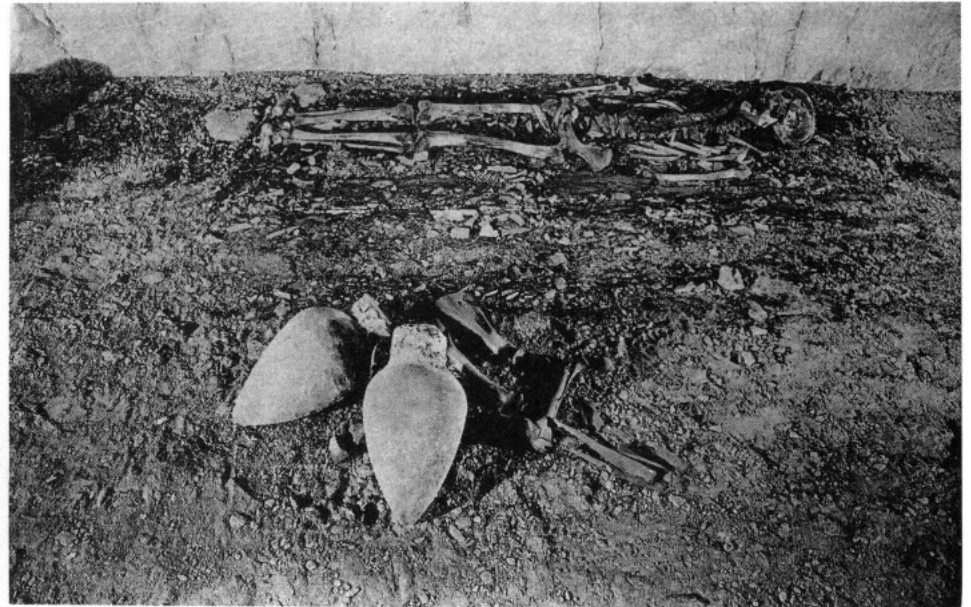
*c.* G 2000, Chapel, looking west.



*d.* G 2000, North end and subsidiary north niche, looking west: 1912.



*a.* G 2000, shaft B, Top looking down to south: 1912.



*b.* G 2000 B, Burial in chamber, looking west: 1912.



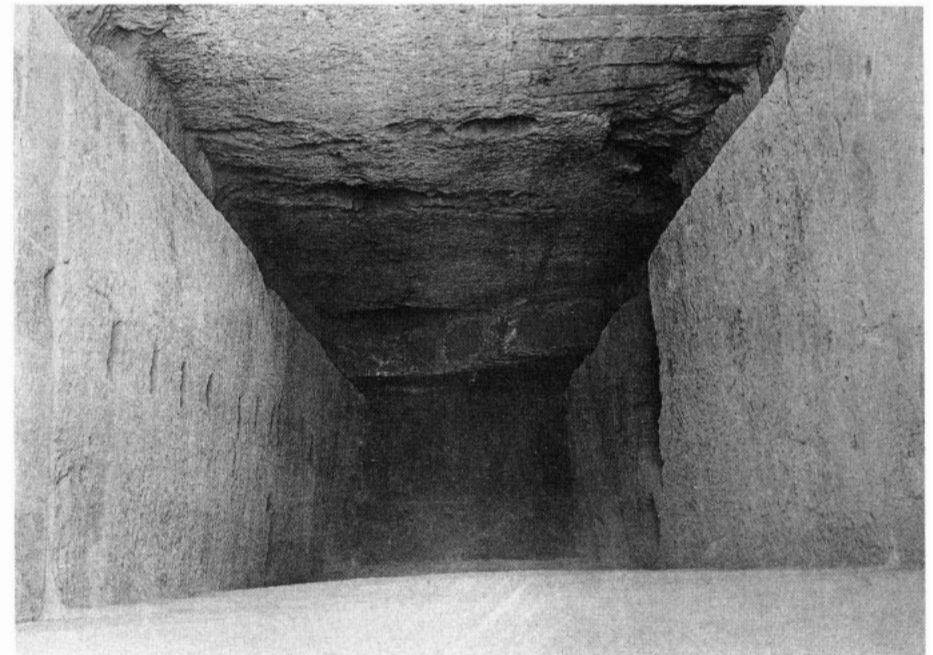
*c.* Cem. G 2100 before excavation, looking ESE from G 2000: 1905.



*d.* G 2100 and G 2100-I annex, East face, looking SSW: 1905-6.



*a.* G 2100, Emplacement for slab-stela and destroyed chapel, looking west: 1905-6.



*b.* G 2100 A, Portcullis grooves and shaft: 1905-6.



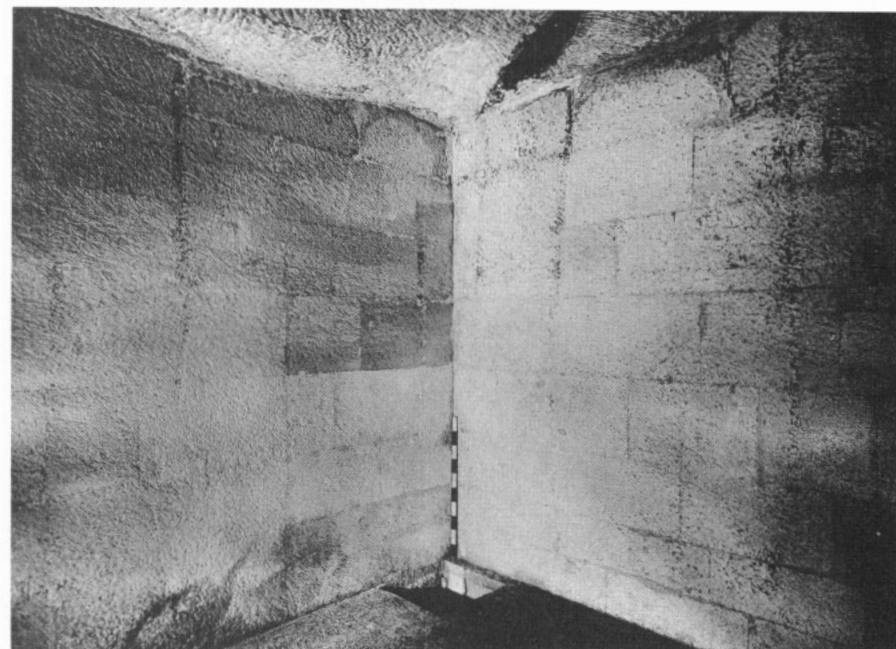
*c.* G 2100 A, North wall of chamber and blocking in passage: 1905-6.



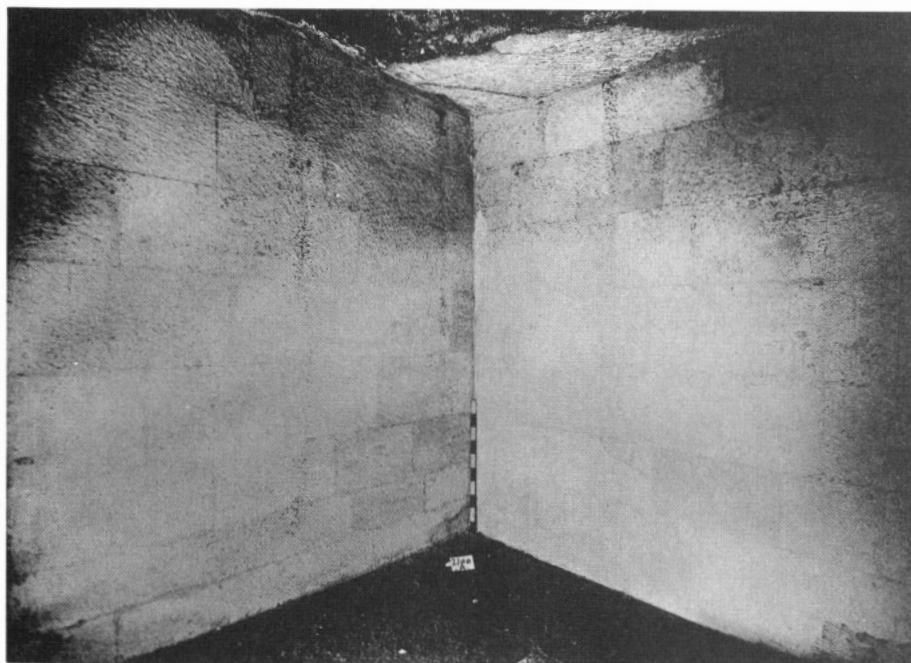
*d.* G 2100 A, Remains of burial in NW corner of chamber: 1905-6.



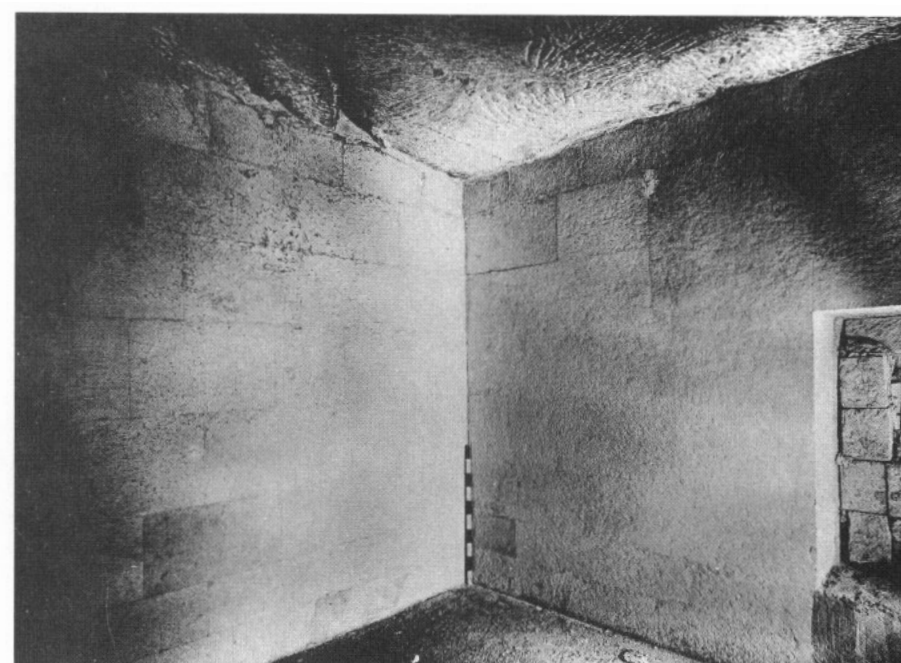
*a.* G 2100 A, SE corner of chamber with canopic pit, scattered bones and models: 1905-6.



*b.* G 2100 A, SE corner of chamber showing lining: 1936.



*c.* G 2100 A, SW corner of chamber showing lining: 1936.



*d.* G 2100 A, NW corner of chamber showing lining: 1936.



*a.* G 2110, East face and exterior chapel, looking SW: 1905-6.



*b.* G 2110, Chapel, looking west: 1905-6.



*c.* G 2110, Stepped face of core and casing north of chapel, looking south: 1905-6.



*a.* G 2110, South entrance jamb of chapel, in Louvre.



*b.* G 2110, North entrance jamb of chapel, in Boston, found displaced.