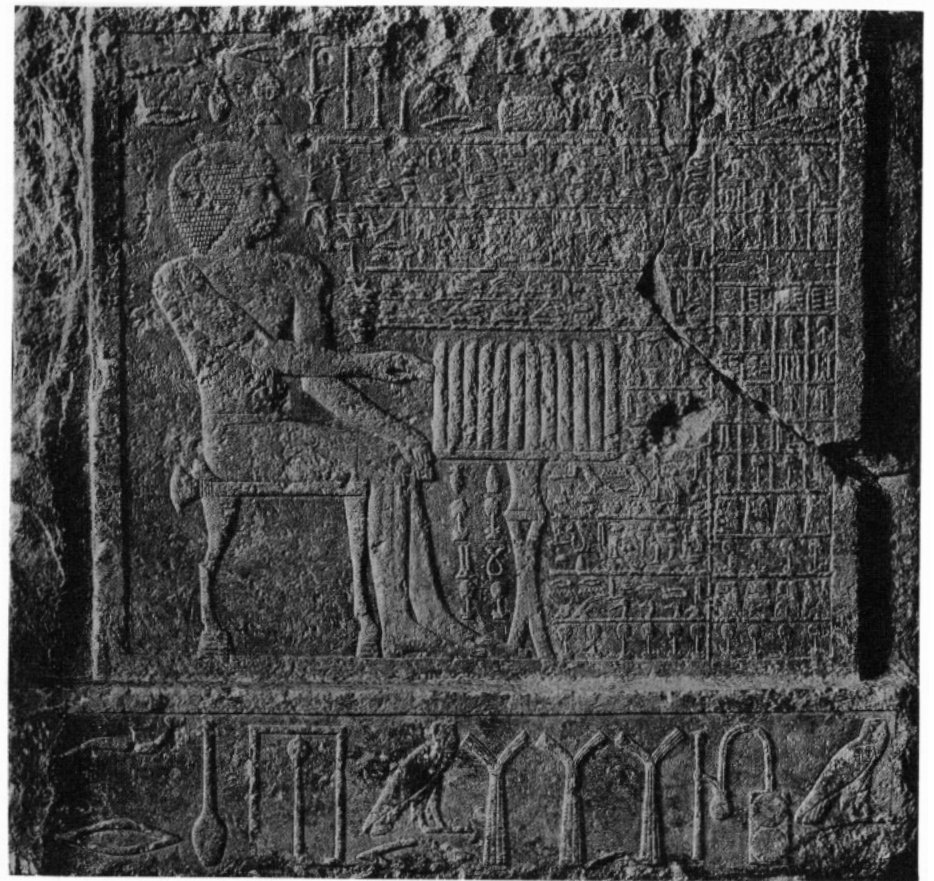




*a.* G 2110, Chapel, north end of east wall in place.



*c.* G 2110, Chapel, tablet from false door in west wall, in Barrocco Collection, Rome.



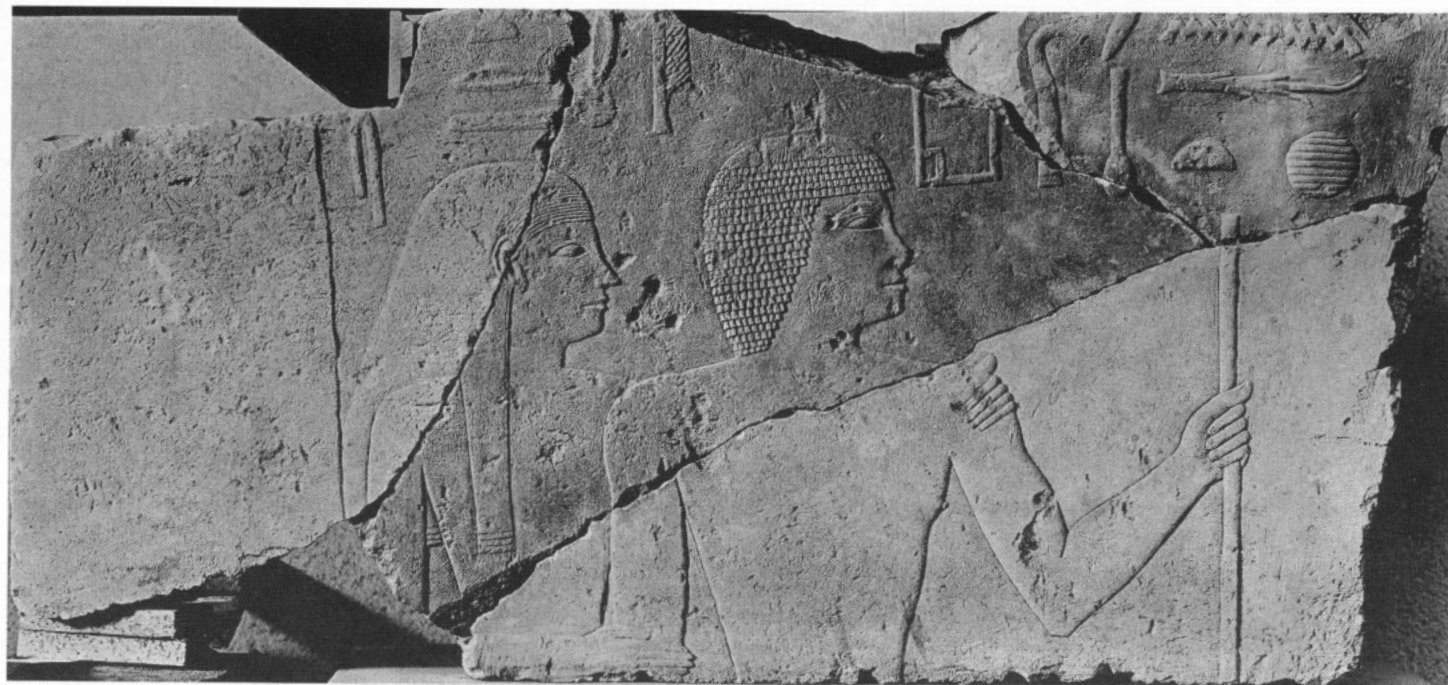
*b.* G 2110, Chapel, blocks from south end of east wall, in Glyptothèque Ny Carlsberg, Copenhagen.



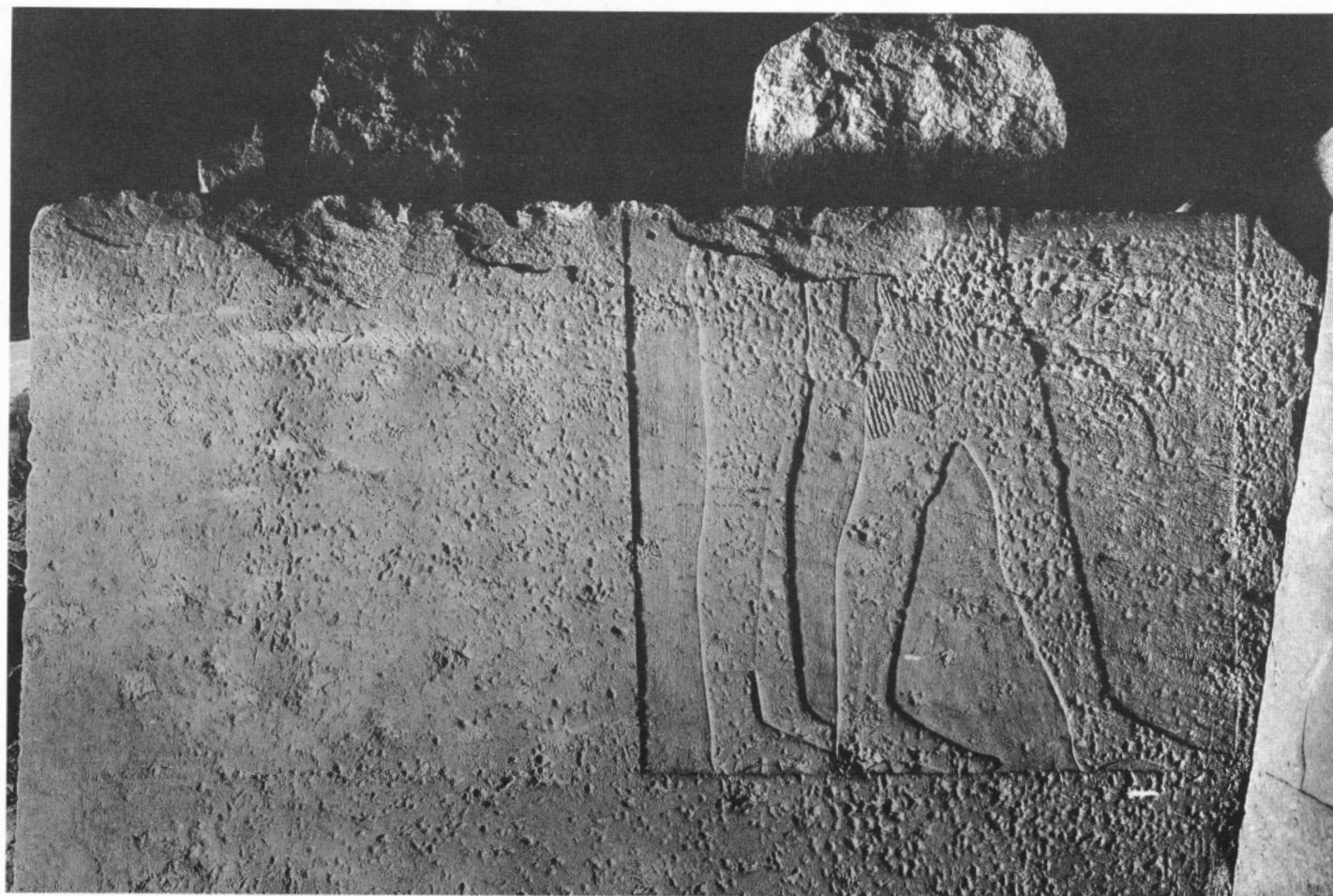
*a.* G 2110, Chapel, south half of west wall in position.



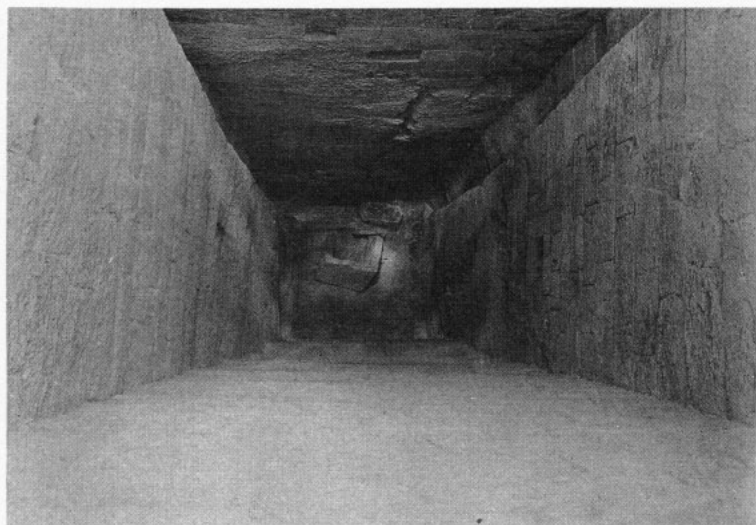
*b.* G 2110, Chapel, adjoining part of west wall, in Glyptothèque Ny Carlsberg, Copenhagen.



*a.* G 2110, Chapel, fragments of upper part of south wall, in Boston, found displaced.



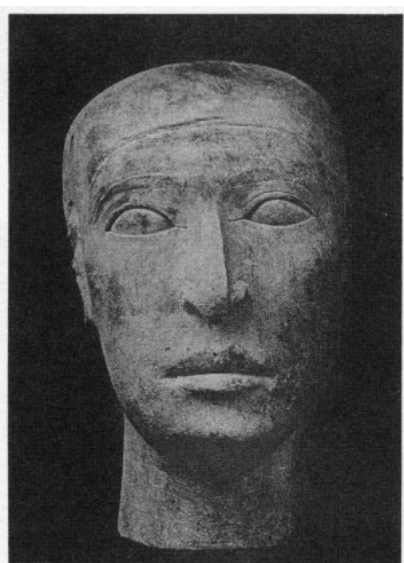
*b.* G 2110, Chapel, lower part of south wall in place.



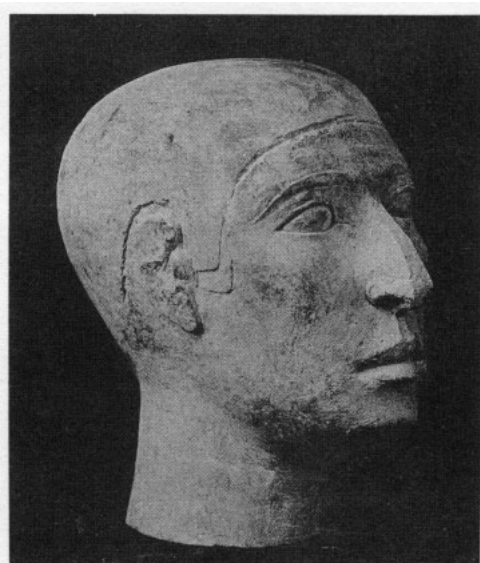
a. G 2110, shaft A, Portcullis stone and fragment of coffin in bottom of shaft.



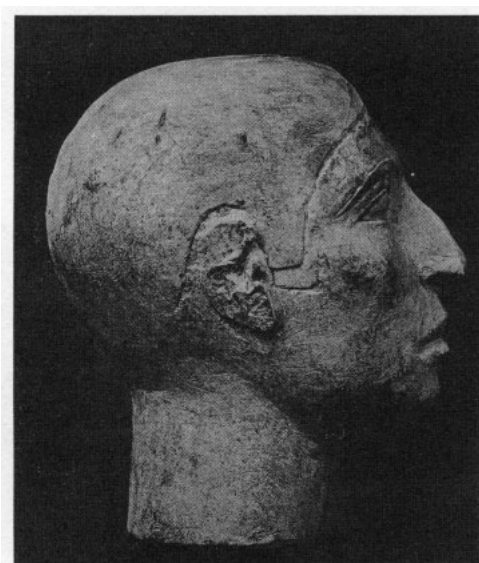
b. G 2110 A, Reserve head as found.



c.

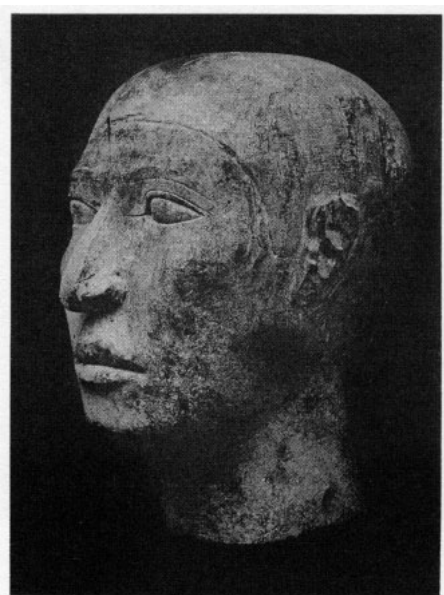


d.



e.

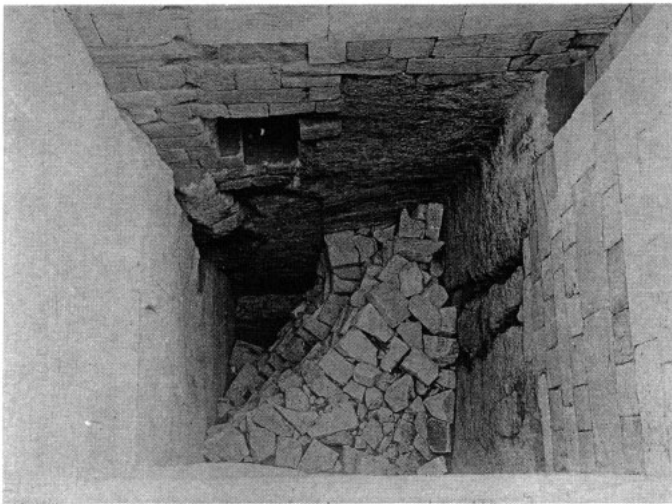
c-f. G 2110, Reserve head of Nofer.



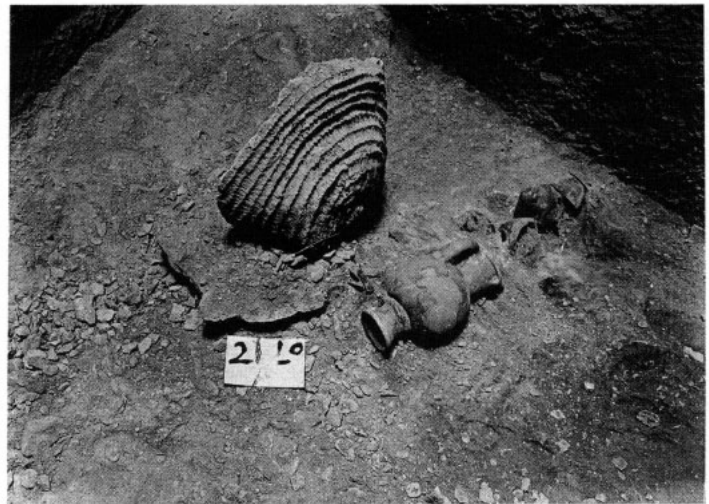
f.



g. G 2120, East face looking SW: 1906.



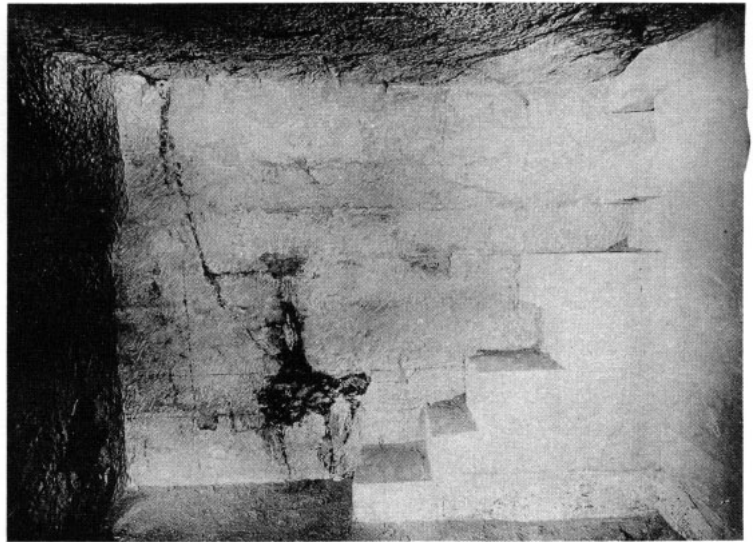
a. G 2120 A, Packing of broken stones in shaft: 1906.



b. G 2120 A, Objects in bottom of shaft: 1933.



c. G 2120 A, Portcullis slab, looking south.



d. G 2120 A, Lining of west wall of chamber: 1933.



e. G 2130, South and east faces, looking NW: 1905-6.



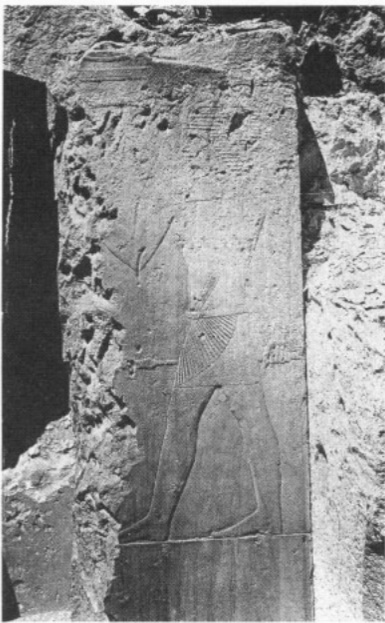
f. G 2130, North and east faces, looking WSW: 1936.



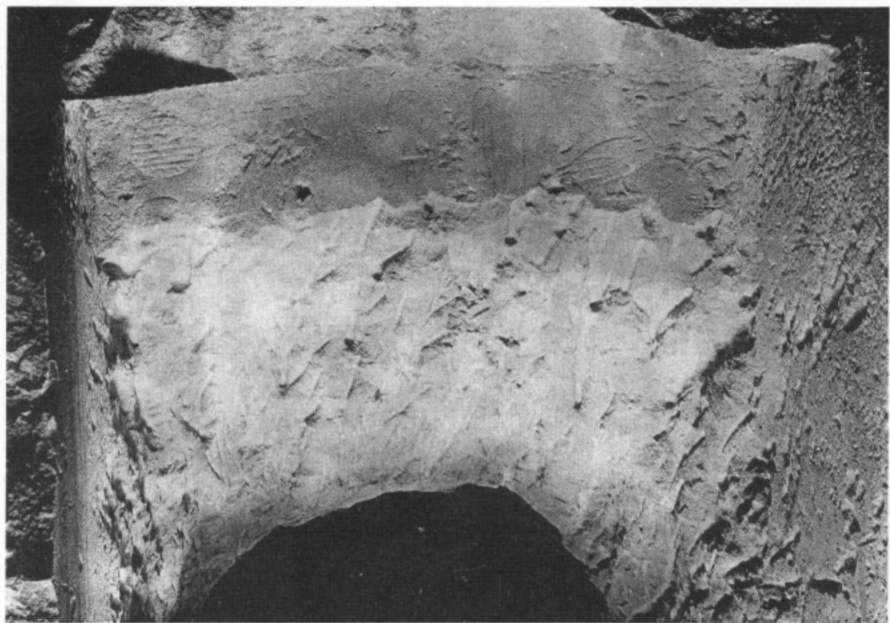
*a.* G 2130, Interior chapel, looking west.



*b.* G 2130, Interior chapel, looking SW from inside doorway.



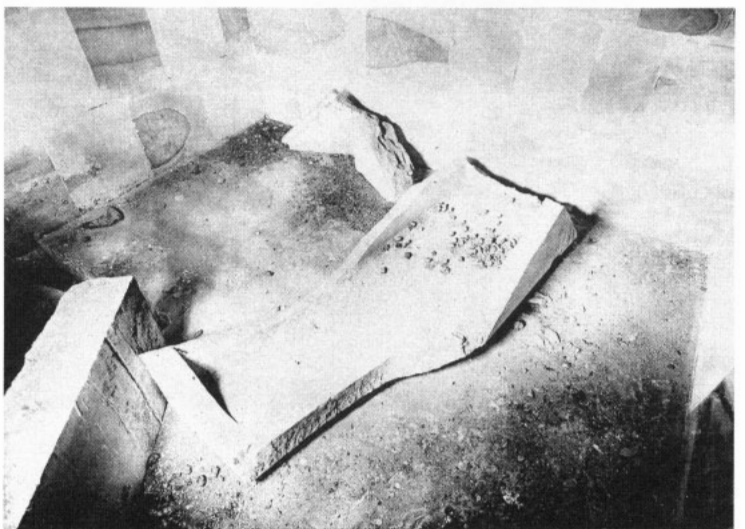
*c.* G 2130, North panel of *ka*-door: 1930.



*d.* G 2130, Inscription on back of inner niche of *ka*-door: 1931.



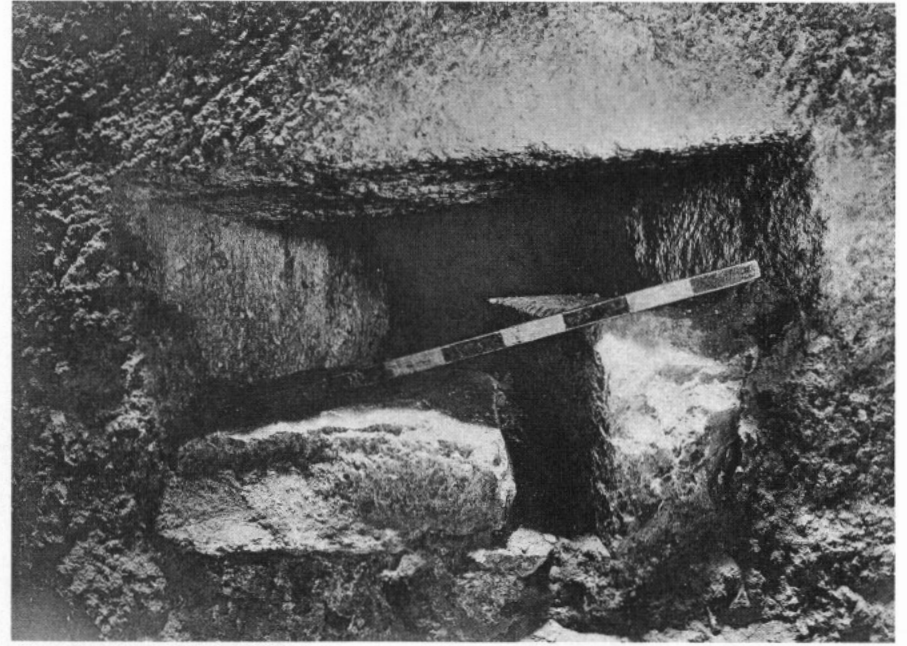
*e.* G 2130, Casing and core, middle of east face, looking north.



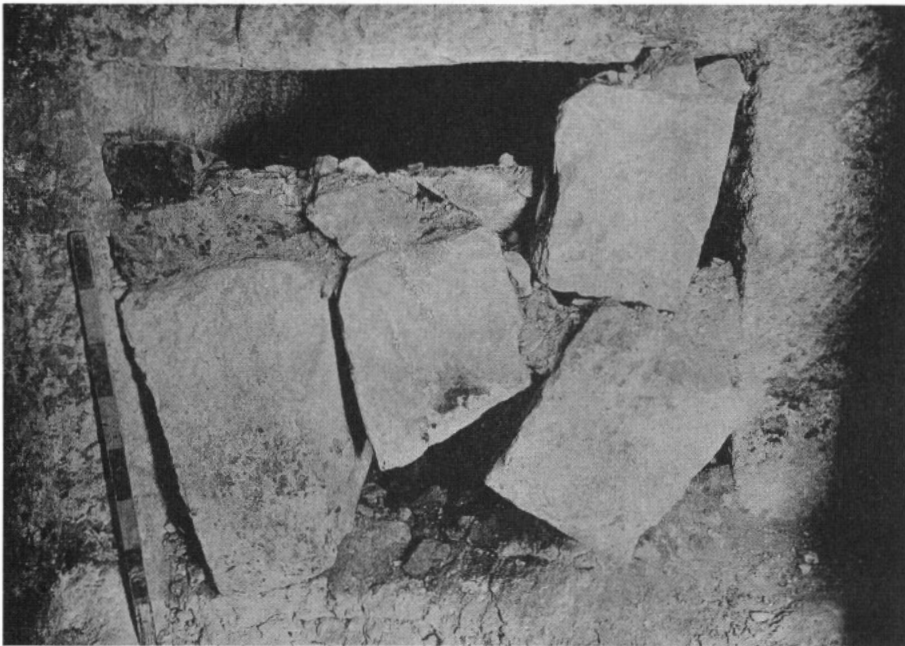
*f.* G 2130 A, Burial chamber, looking SW: 1932.



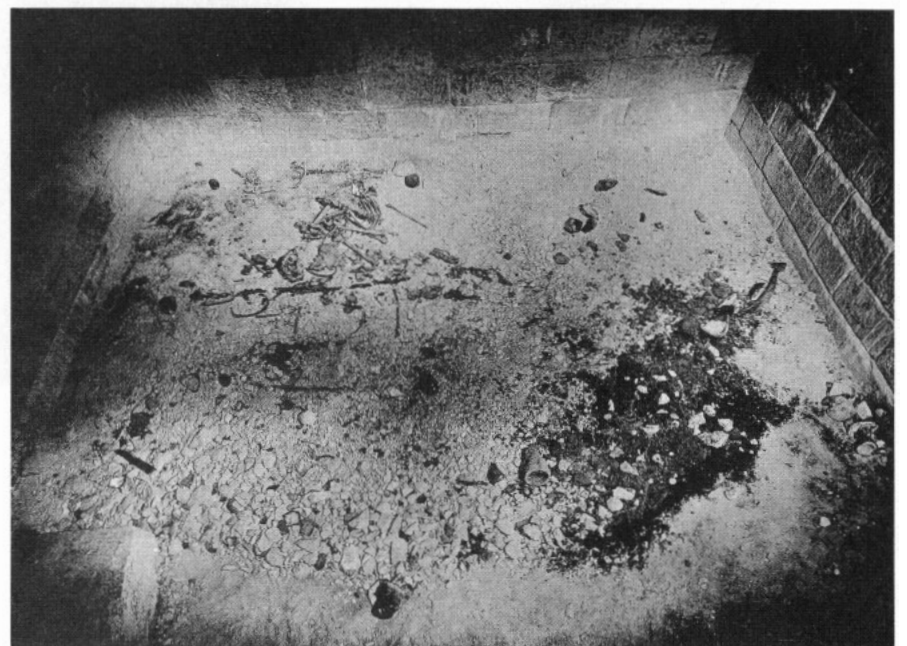
*a.* G 2210, South end, looking west; stepped core, massive enlargement, and chapel recess: 1935.



*b.* G 2210 A, 'Window' over passage to chamber, looking south.



*c.* G 2210 A, Blocking of passage, looking south.



*d.* G 2210 A, Chamber as found, looking west.



a. G 2140, East face, looking SW: 1937.



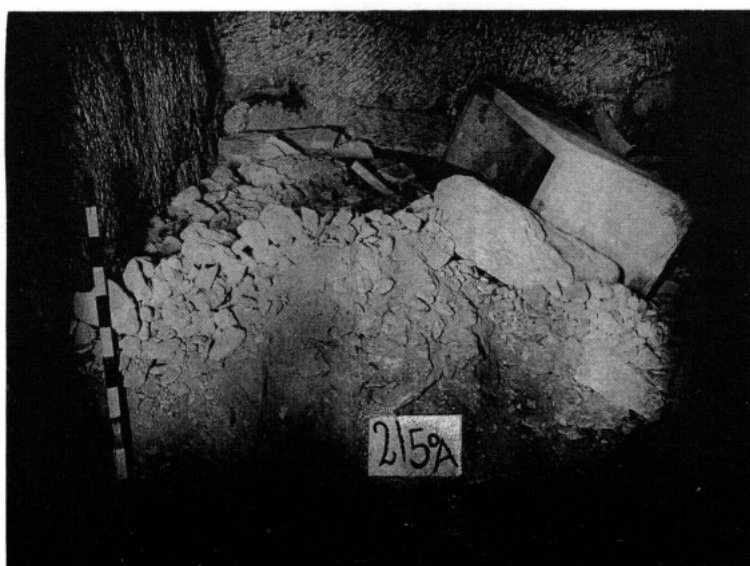
b. G 2140, Unfinished inscription on architrave of ka-door in interior chapel, type (3 a).



c. G 2150, East face and exterior c.b. chapel, looking south: 1912.

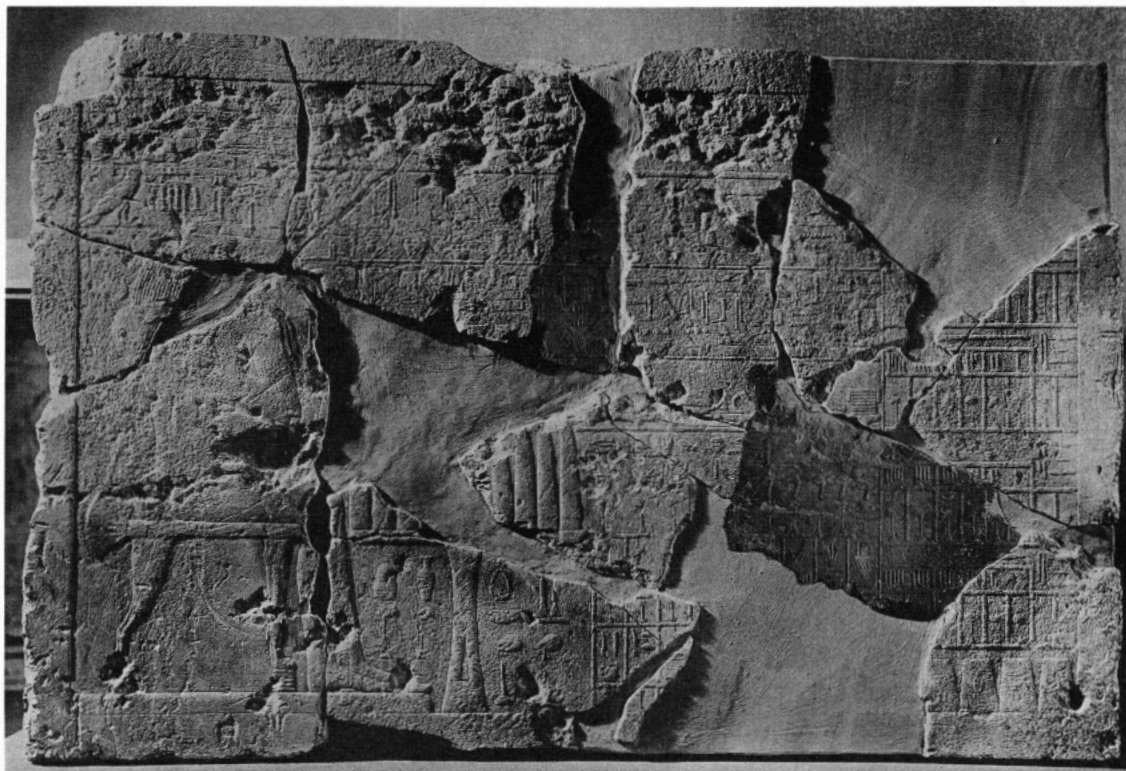


d. G 2150, Entrance to interior chapel of type (4 a), looking west: 1912.



e. G 2150 A, Granite coffin in chamber, looking south: 1933.

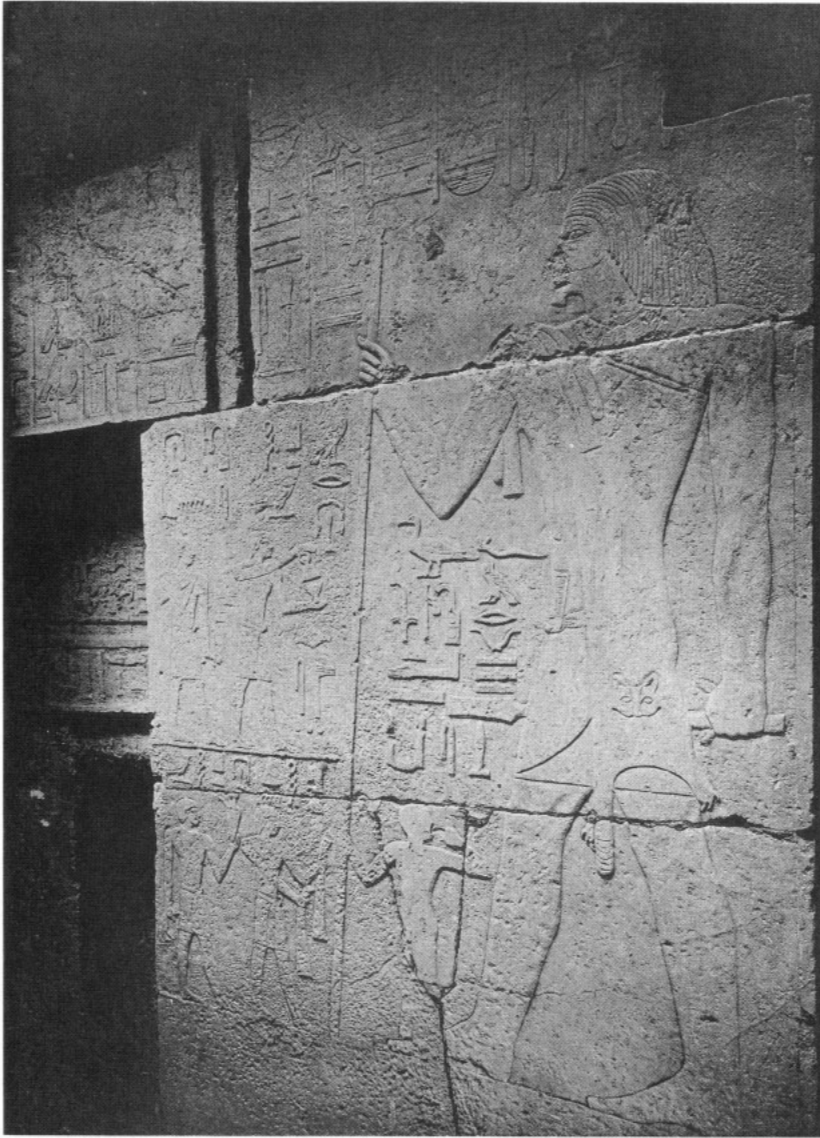




a. G 2120, Slab-stela of Seshat-sekhentyuw.



b. G 2150, Blocks from south jamb of chapel entrance.



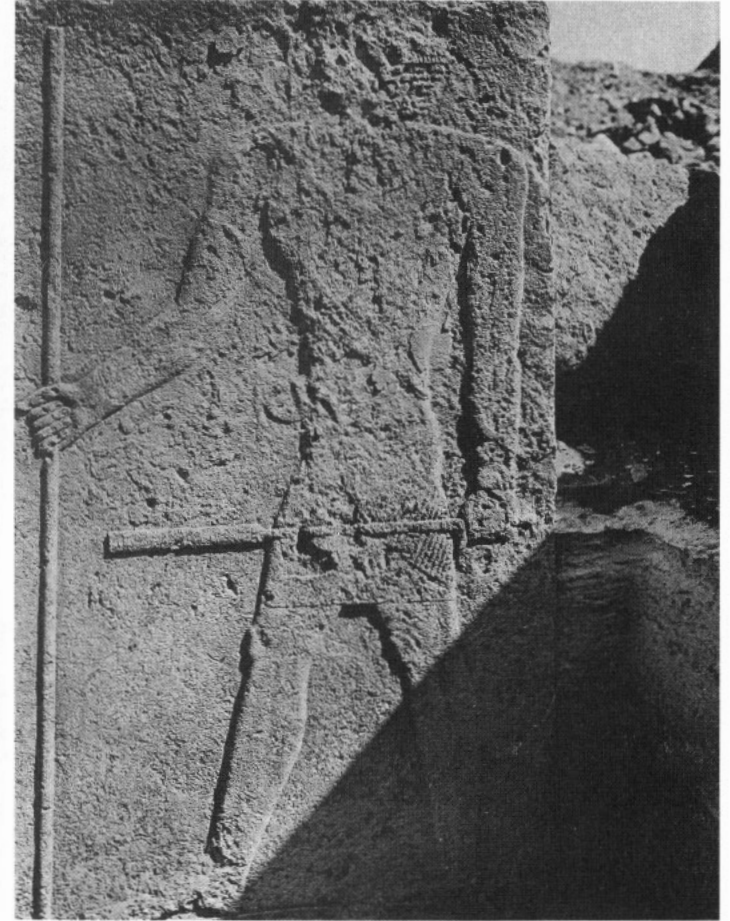
*a.* G 2150, West wall of interior chapel.



*b.* G 2150, South wall of interior chapel.



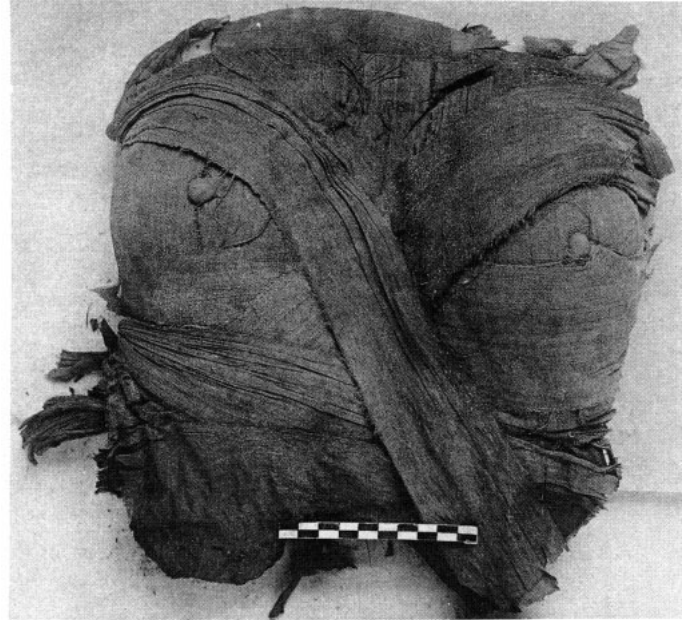
*a.* G 2220, North end of east wall of interior chapel.



*b.* G 2220, South end of east wall of interior chapel.



*a.* G 2220, shaft B, Wooden coffin in chamber, looking north.



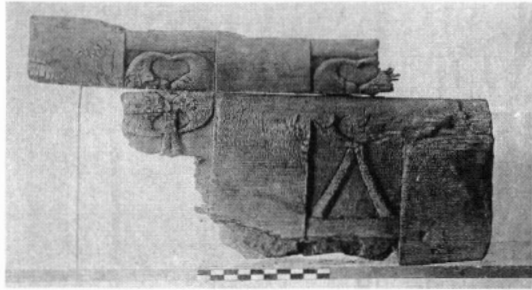
*b.* G 2220 B, Linen breasts from mummy.



*c.* G 2220 B, Mummy in coffin.



*d.* G 2220 B, Mummy: wrappings imitate dress of woman.



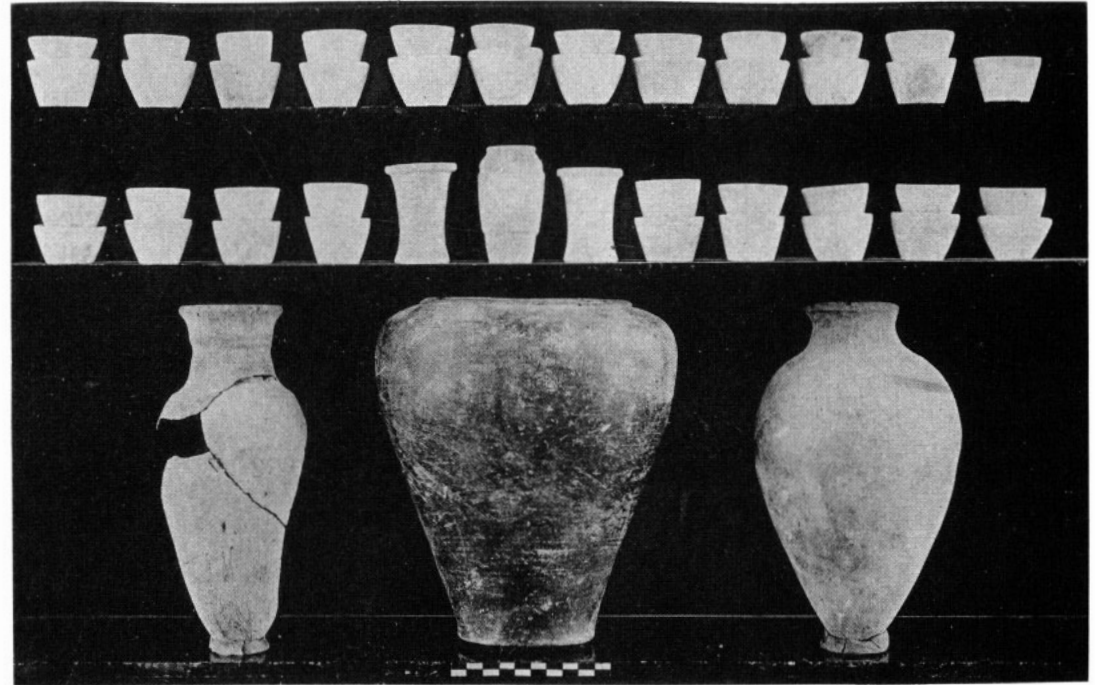
a. G 2150 A, Fragment of carved wood from burial-chamber.



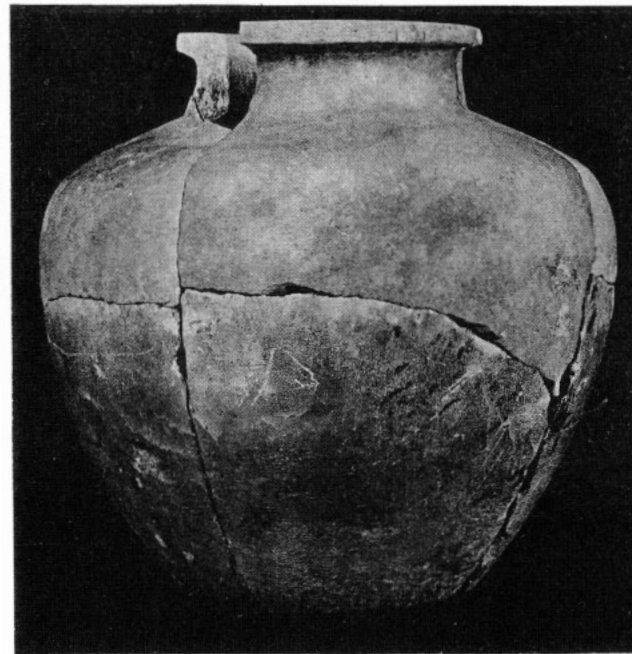
c. G 2150 A, From chamber, copper models and other objects.



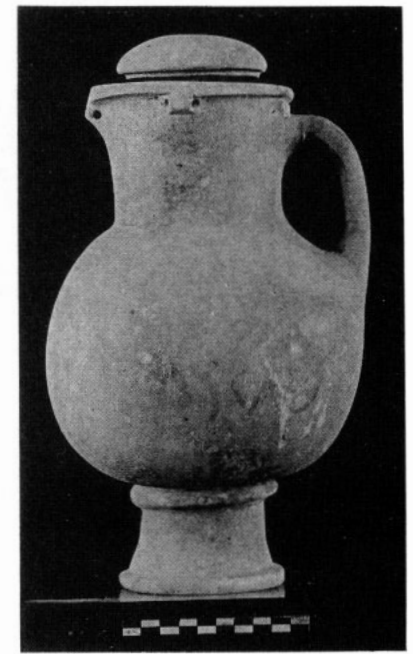
d. G 2120, Alabaster models and pottery; G 2160, Pottery bowl.



b. G 2150 A, Model alabaster vessels and pottery.



e. G 2100 A, Alabaster shoulder jar.



f. G 2120 A, Alabaster jug, type XIV a.



*a.* Cem. G 4000, looking west from Cheops pyramid: 1913.



*b.* Cem. G 4000, looking north from Second Pyramid: 1915.



*a.* Cem. G 4000, Street between lines 4 and 5, looking north from south end of G 4411: 1914.



*b.* Cem. G 4000, Street between rows 4 and 5, looking south from north of G 4440: 1914.



*c.* Cem. G 4000, Street between rows 5 and 6, looking north from south end of G 4520: 1914.



*d.* Cem. G 4000, Street between rows 6 and 7, looking north from south end of G 4620: 1914.