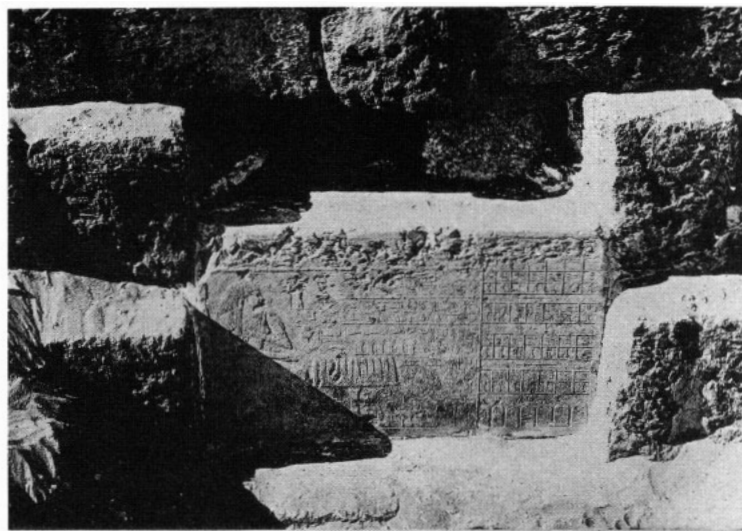
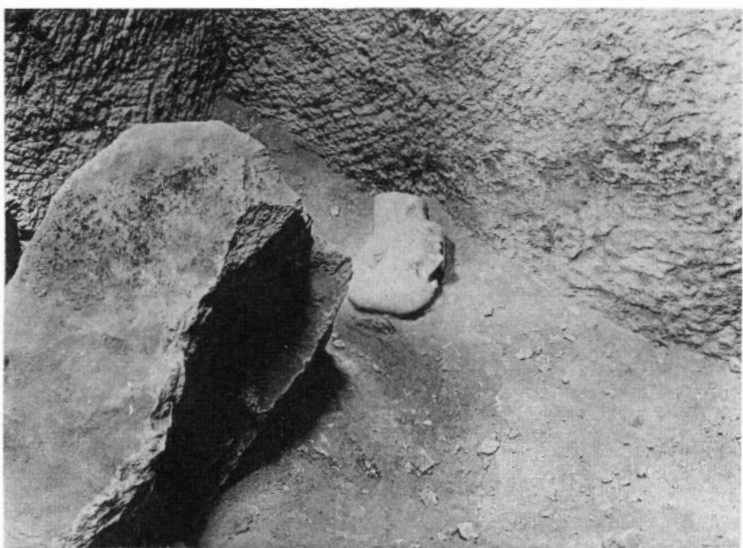




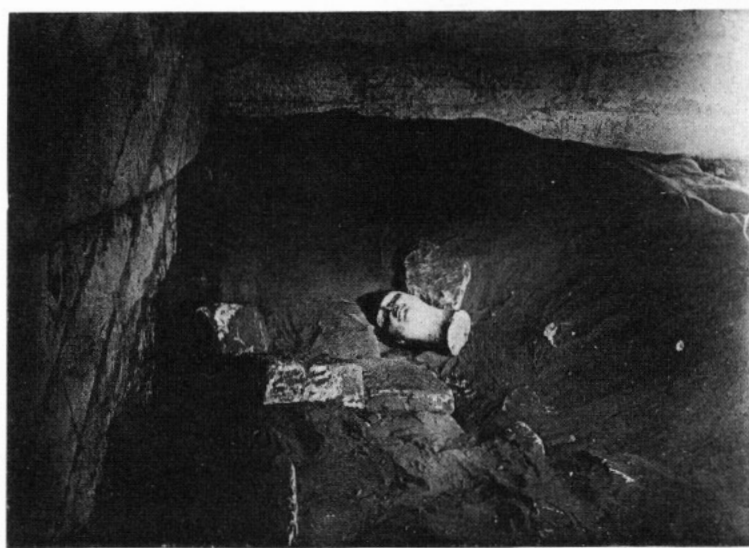
*a.* G 4140, Remains of chapel, looking NW: 1912.



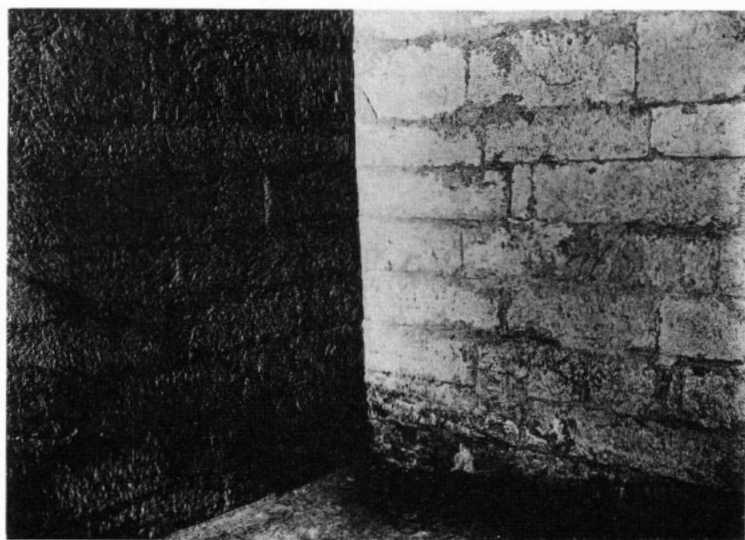
*b.* G 4140, Slab-stela in place: 1912.



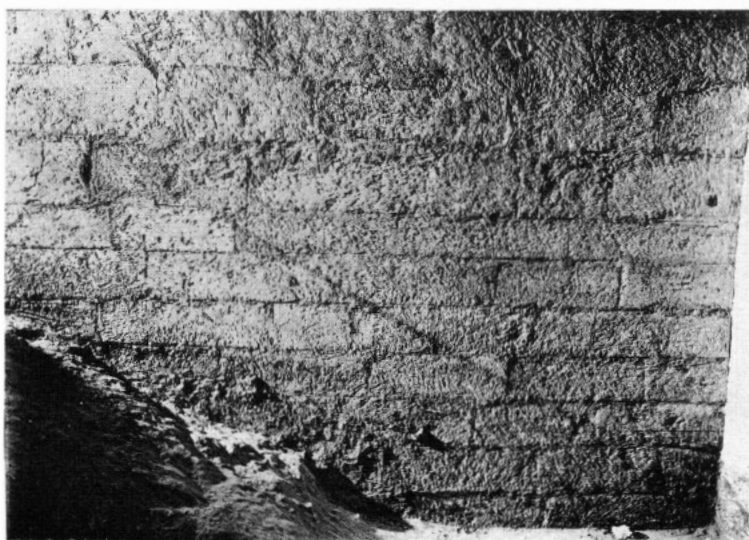
*c.* G 4140 A, Reserve head in debris in shaft: 1913.



*d.* G 4140 A, Chamber, second reserve head as found: 1913.



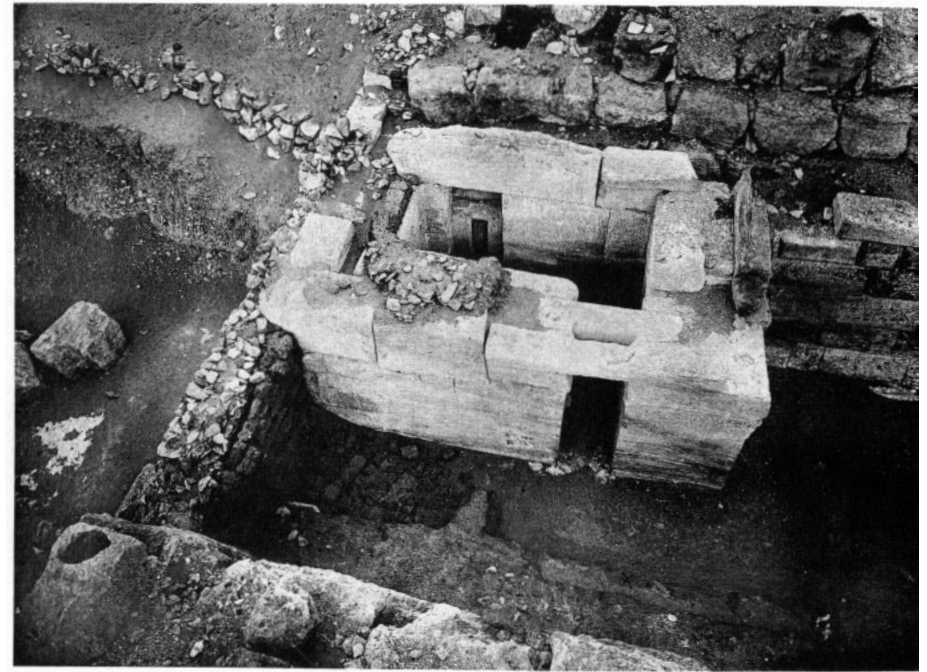
*e.* G 4140 A, SE corner of lined chamber: 1913.



*f.* G 4140 A, East wall of lined chamber: 1913.



*a.* G 4240, Cased mastaba, looking SSW: 1937.



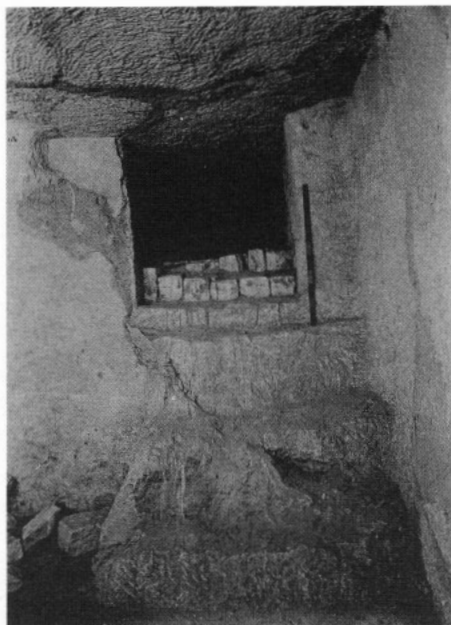
*b.* G 4240, Chapel, looking down to west: 1914.



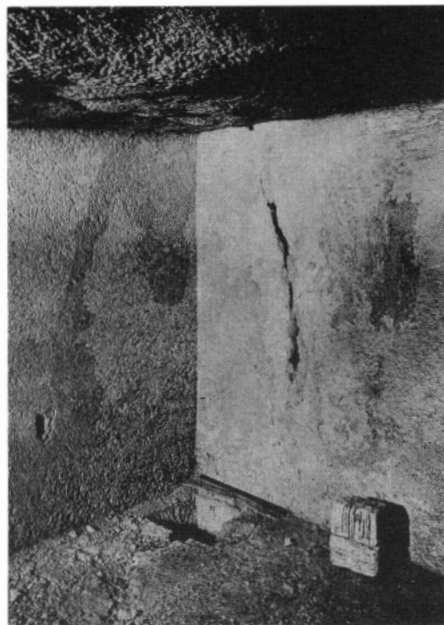
*c.* G 4240, Chapel, *ka*-door, looking down to west: 1914.



*d.* G 4240, Exterior stone chapel, looking SW: 1937.



*a.* G 4240 A, Unlined chamber of type 2, looking north; stair, door, blocking: 1934.



*b.* G 4240 A, SE corner of chamber with canopic pit: 1934.



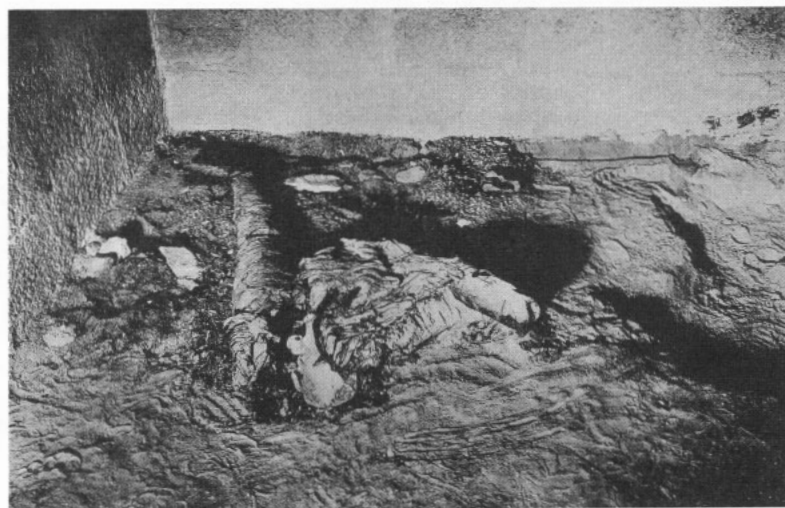
*c.* G 4240 A, Alabaster vessels in thieves' debris in bottom of shaft: 1913.



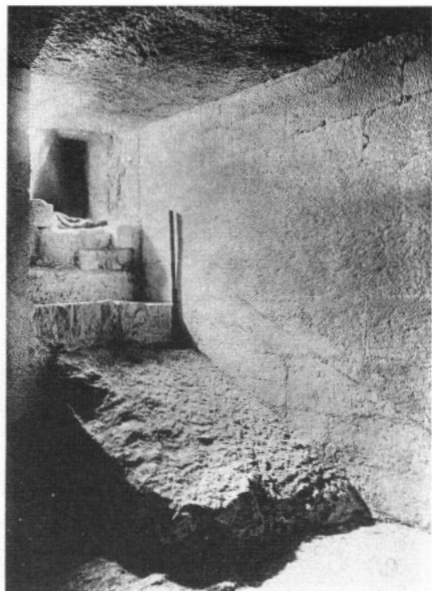
*d.* G 4340, Chapel and casing, looking NNW: 1914.



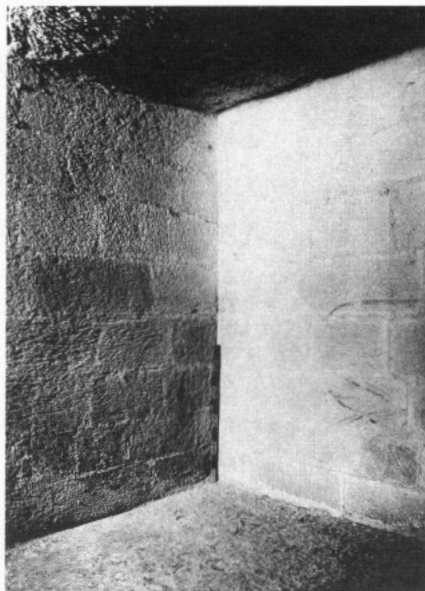
*e.* G 4340 A, Reserve head in thieves' debris of shaft: 1913.



*f.* G 4340 A, Mummy thrown aside in SW corner of lined chamber, looking west: 1913.



*a.* G 4340 A, NE corner of lined chamber, ramp, doorway, and blocking: 1934.



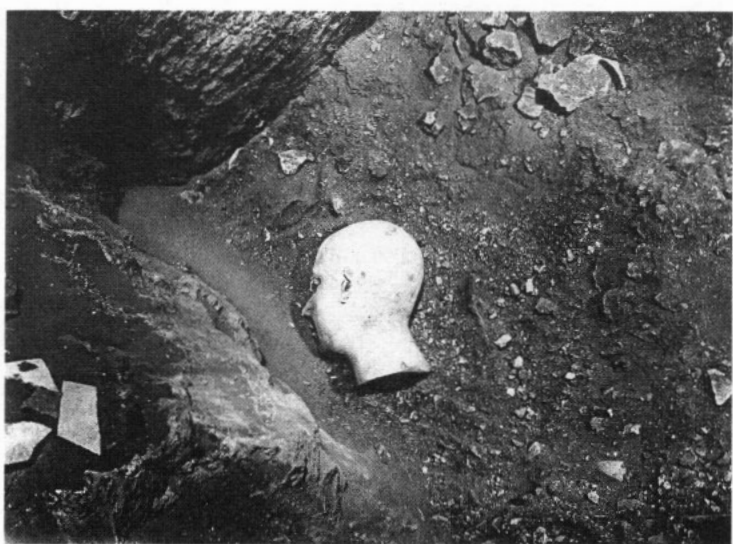
*b.* G 4340 A, SE corner of chamber: 1934.



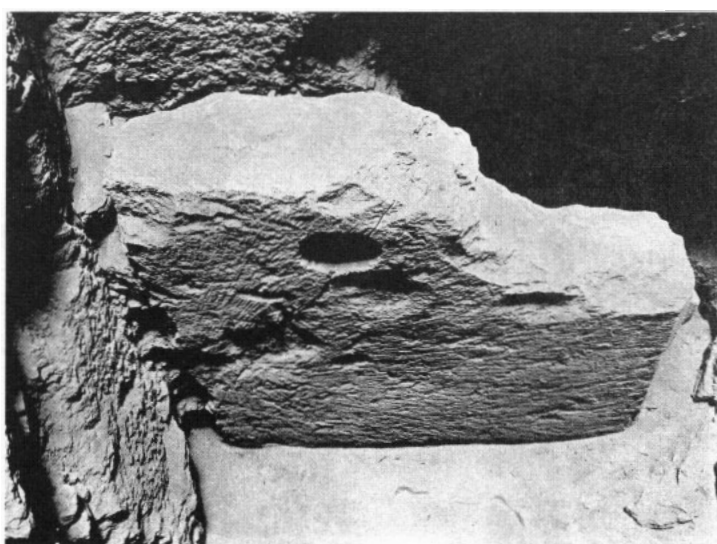
*c.* G 4440 A, Reserve heads in thieves' debris at bottom of shaft: 1913.



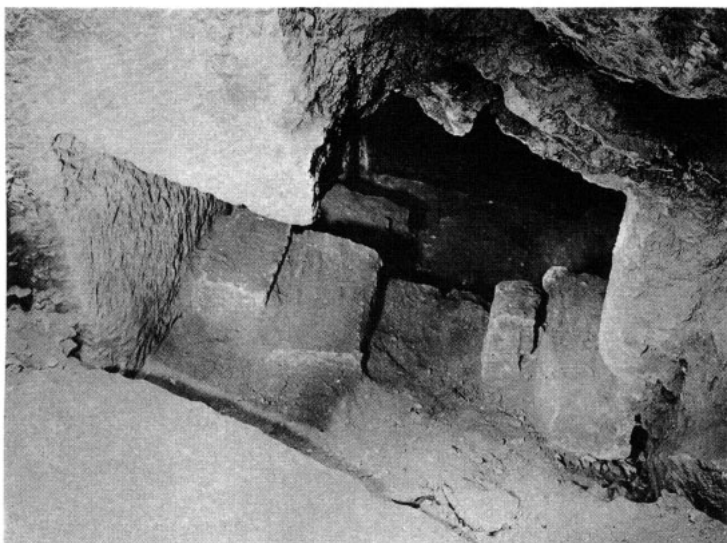
*d.* G 4540, Street between G 4540 and 4560 showing chapel, looking south: 1914.



*e.* G 4540 A, Reserve head in shaft just above portcullis slab: 1913.



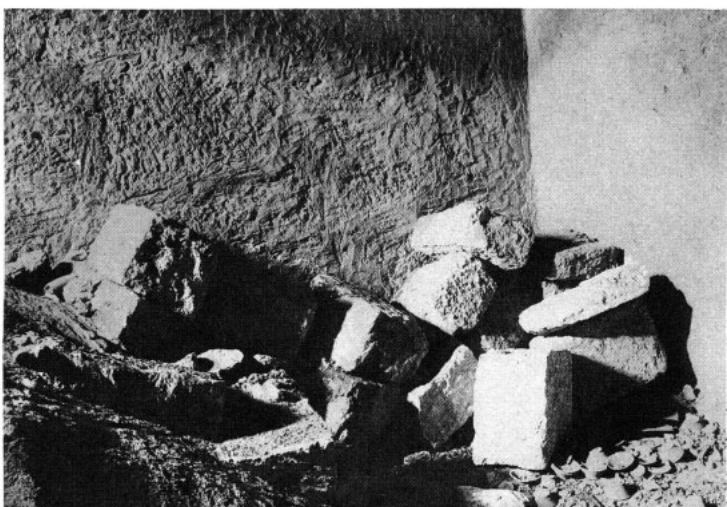
*f.* G 4540 A, Portcullis slab in place: 1913.



*a.* G 4540 A, Blocking, looking south into passage: 1913.



*b.* G 4540 A, Disturbed burial beside plastered west wall of lined chamber: 1913.



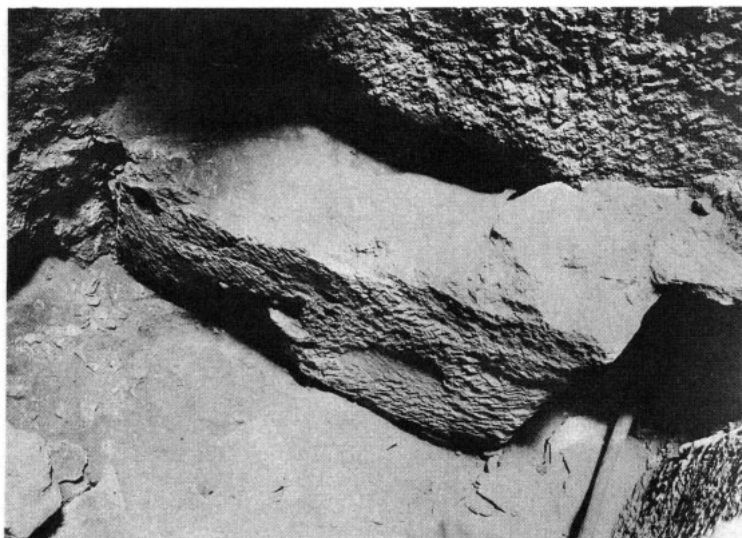
*c.* G 4540 A, SE corner of plastered lined chamber: 1913.



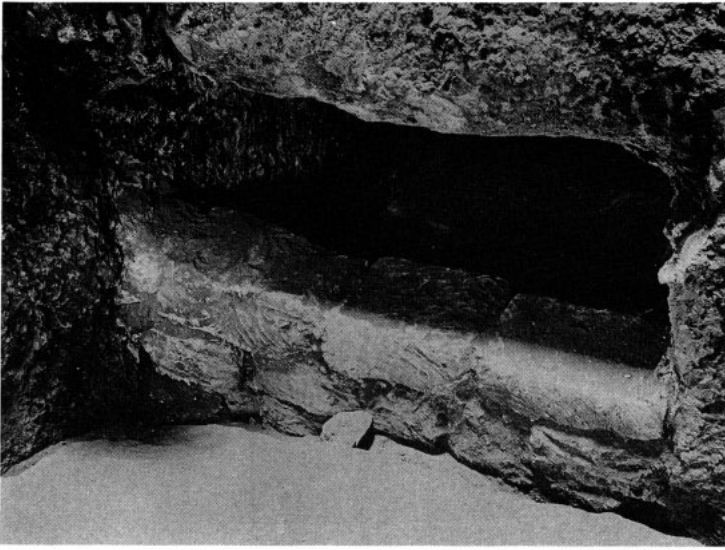
*d.* G 4640, East face looking north showing remains of chapel and monolithic stela: 1913.



*e.* G 4640 A, Reserve head in bottom of shaft: 1913.



*f.* G 4640 A, Portcullis slab, looking down to SSE: 1913.



*a.* G 4640 A, Blocking in passage, looking south: 1913.



*b.* G 4640 A, SE corner of lined chamber: 1913.



*c.* G 4640 A, Canopic pit, human bones scattered by thieves: 1913.



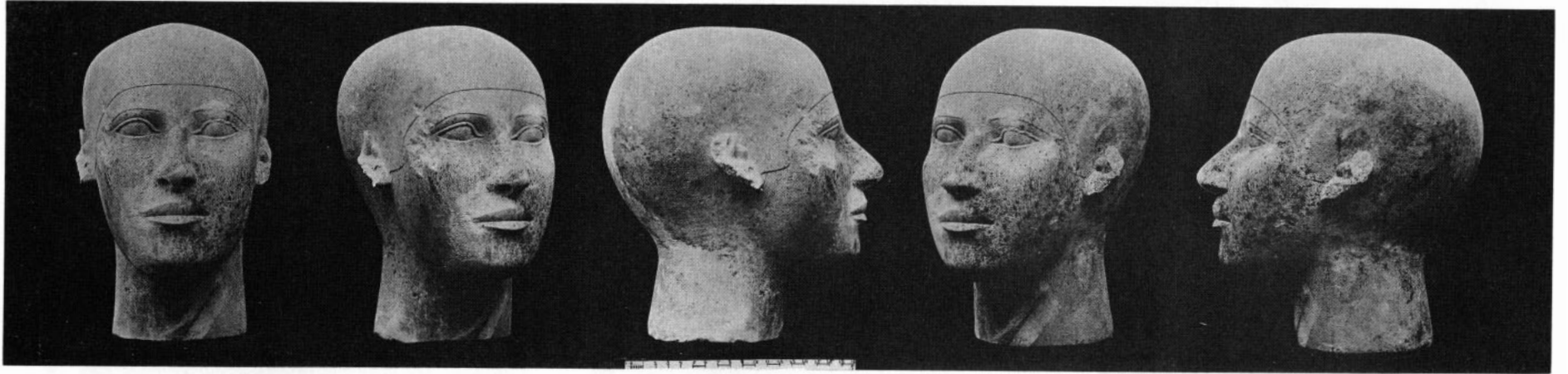
*d.* G 4740, Street east of mastaba with secondary mastaba, looking south: 1914.



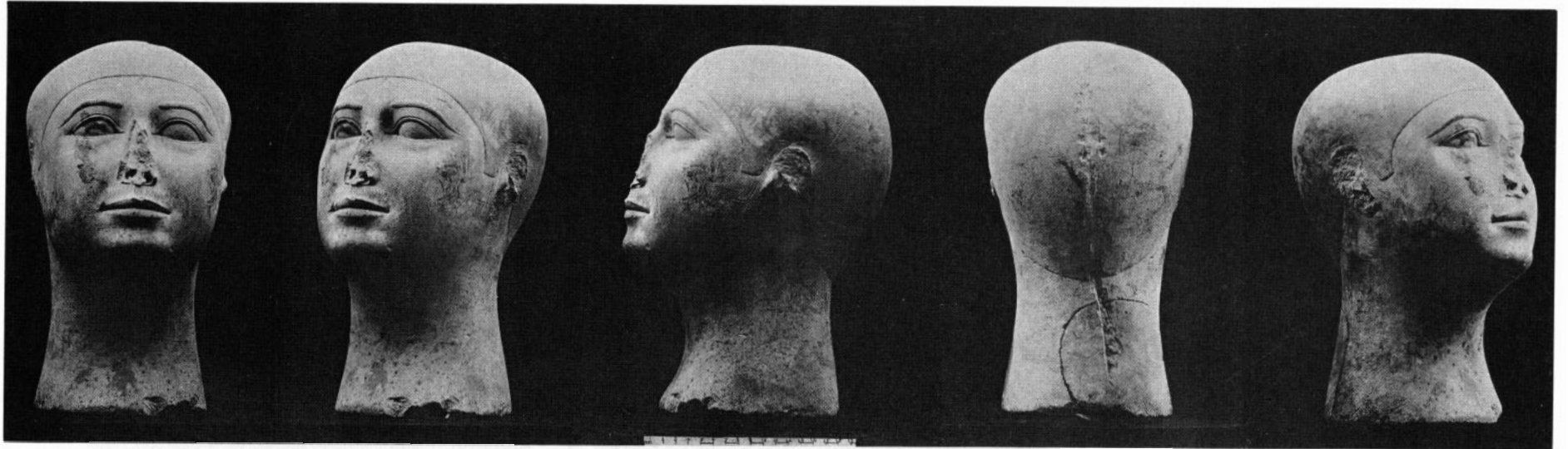
*e.* G 4740 A, Unlined chamber, looking NE, stair and part of blocking: 1913.



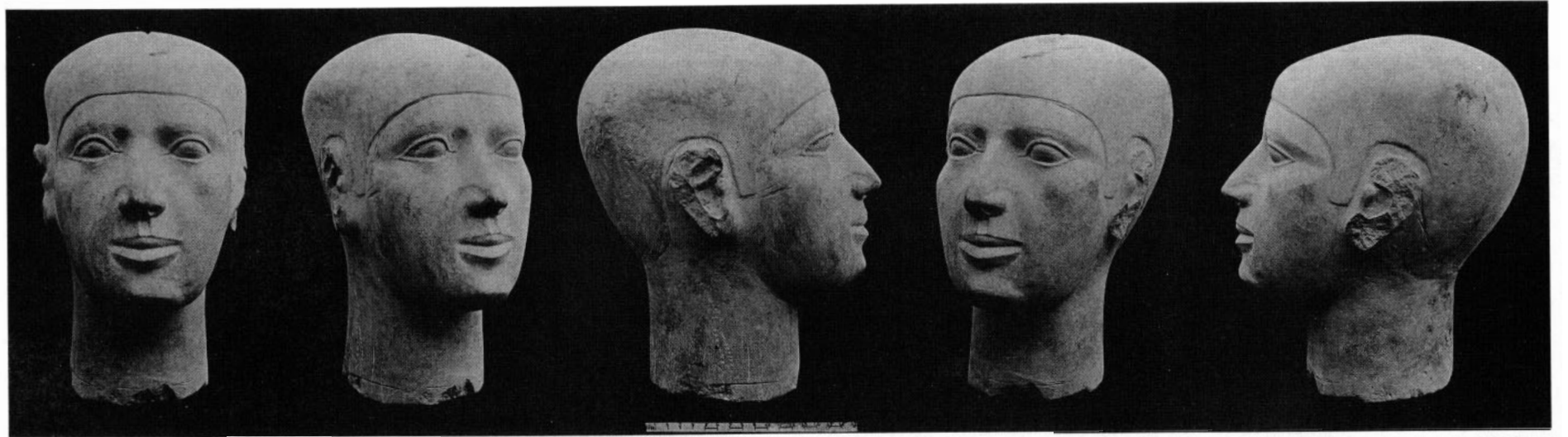
*f.* G 4740 A, Chamber looking WNW, showing remains of burial: 1913.



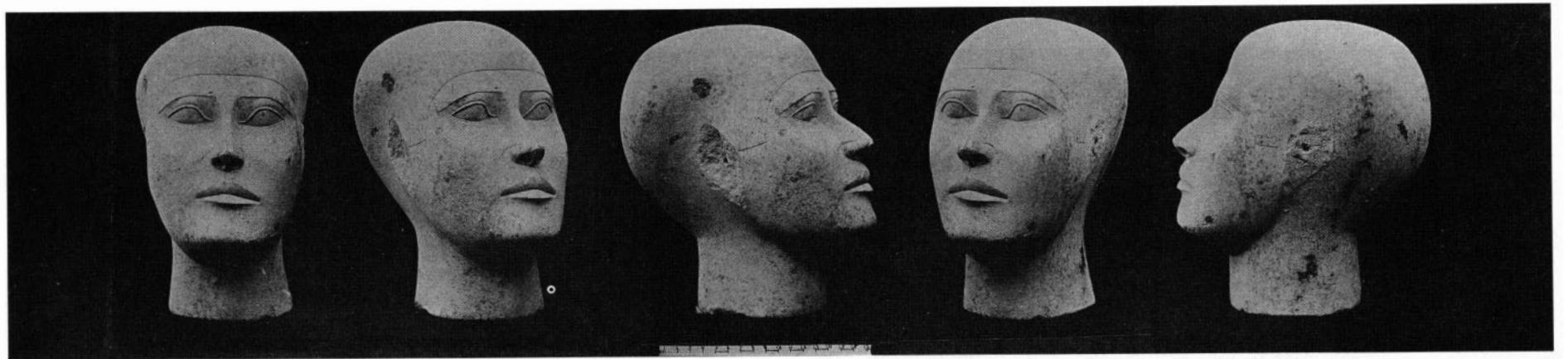
*a.* G 4140 A, Reserve head of husband of princess.



*b.* G 4140 A, Reserve head of Princess Merytyetes.

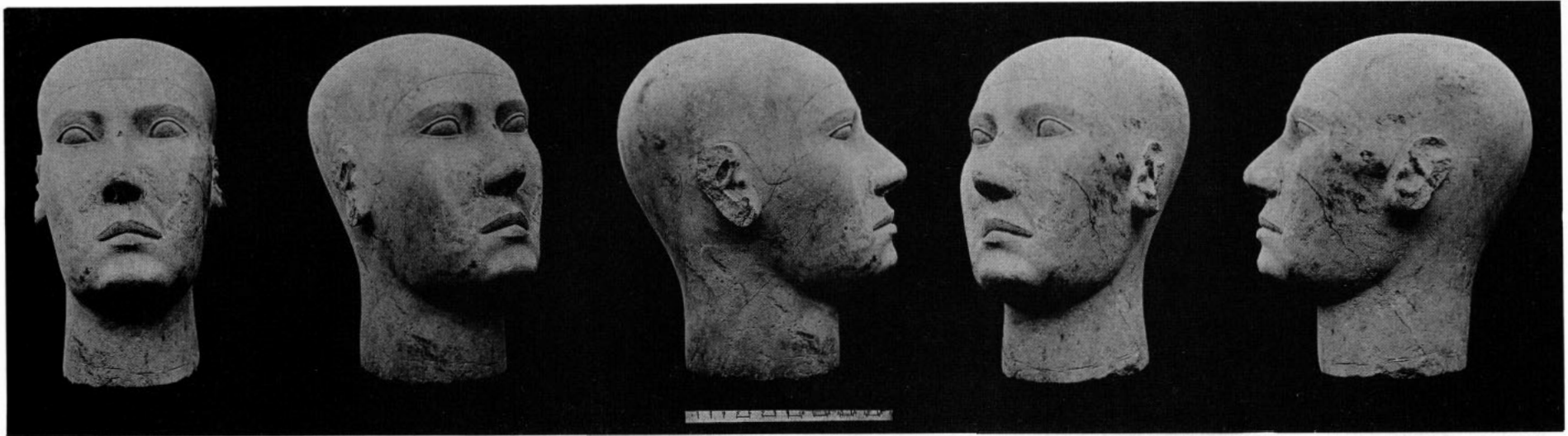


*a.* G 4240 A, Reserve head of Prince Sneferuw-seneb.

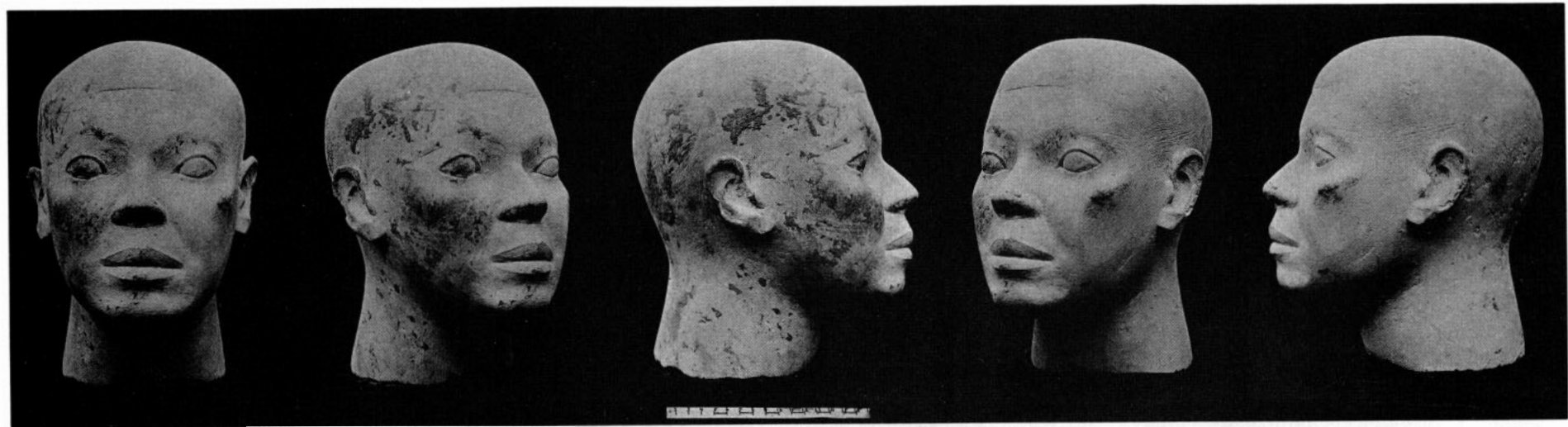


*b.* G 4340 A, Reserve head of man.

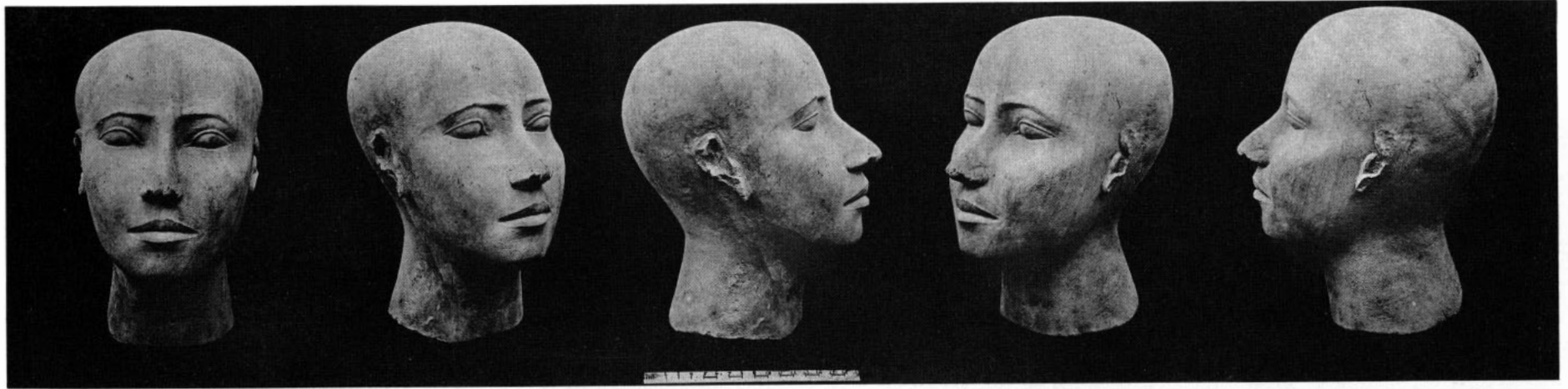




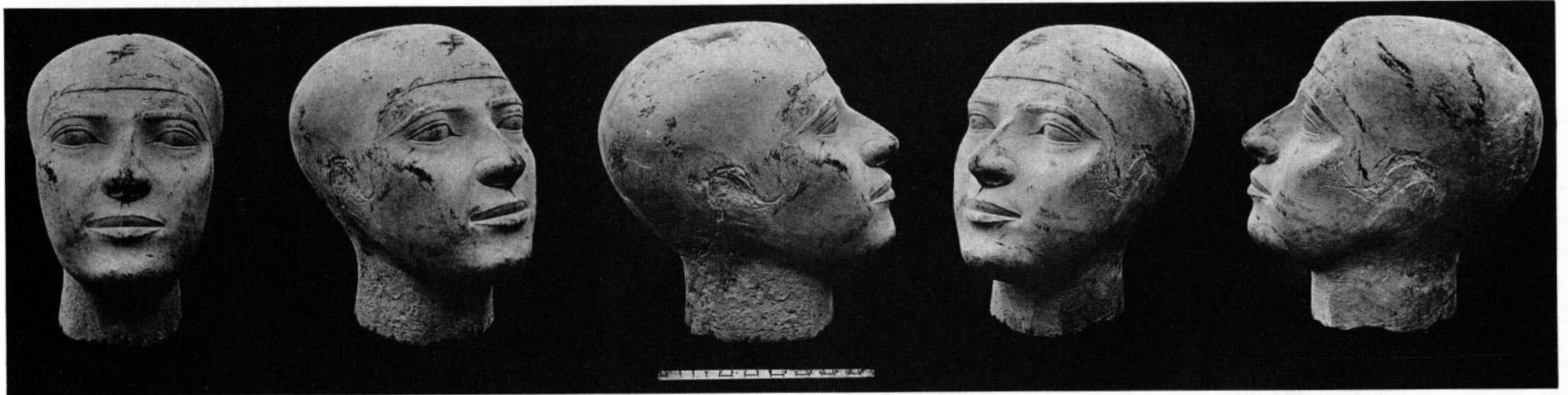
*a.* G 4440 A, Reserve head of man.



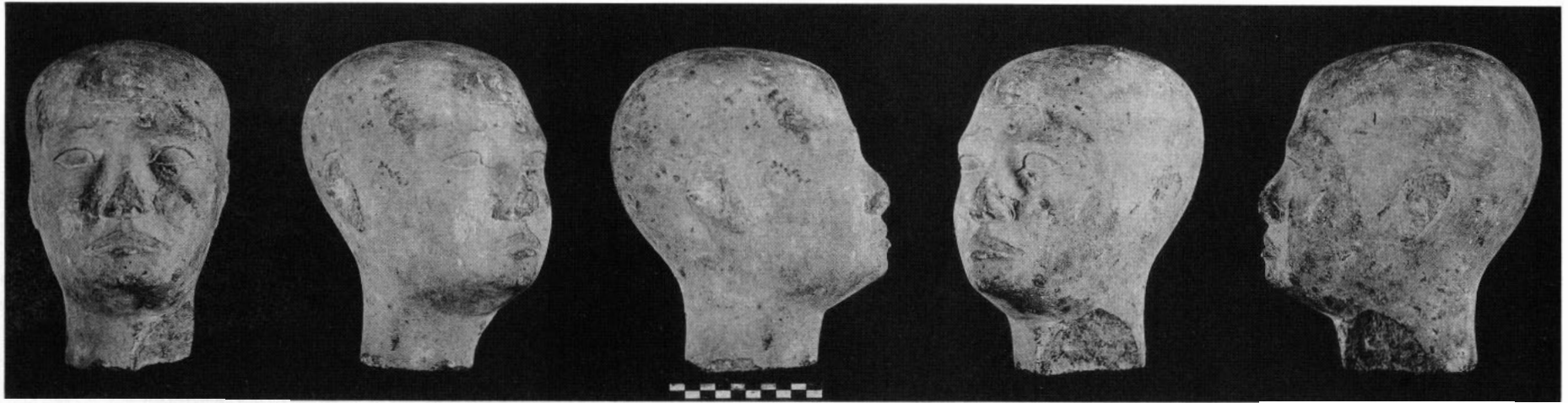
*b.* G 4440 A, Reserve head of woman.



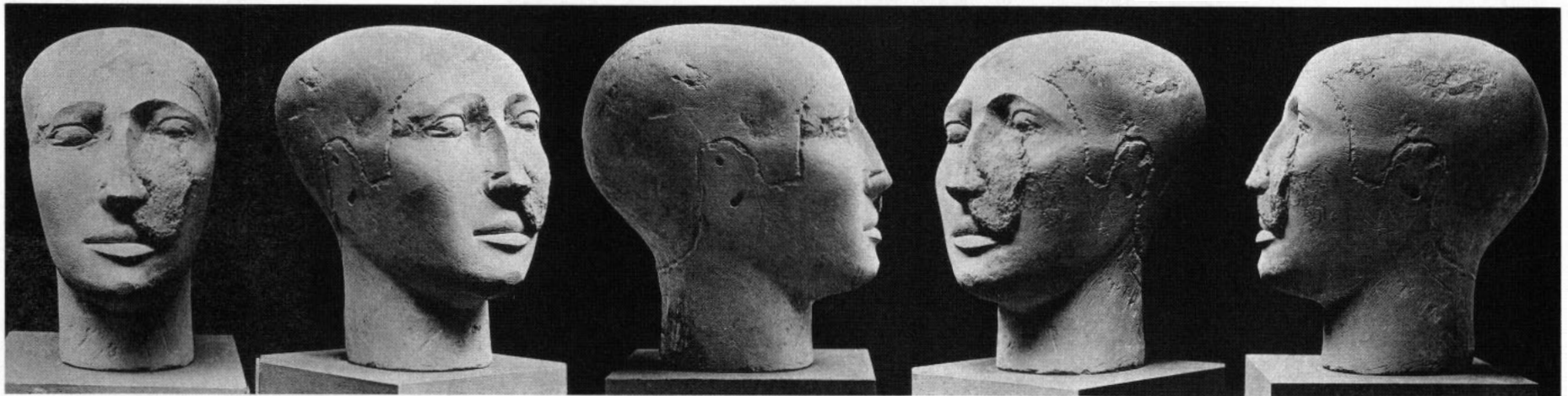
*a.* G 4540 A, Reserve head of woman.



*b.* G 4640 A, Reserve head of man.



*a.* Reserve head of woman found in thieves' debris of pit G 5020 annex, perhaps from G 4240 A.



*b.* Reserve head of man intrusive in G 4940 B.



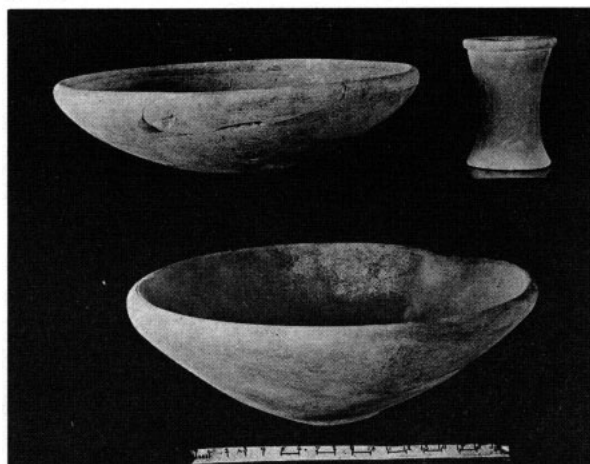
a. G 4140, Slab-stela of Princess Merytyetes.



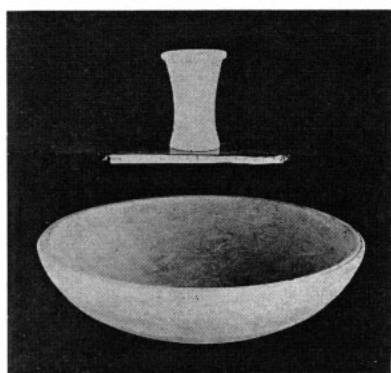
b. G 4240, Tablet from *ka*-door of chapel of Prince Sneferuw-seneb.



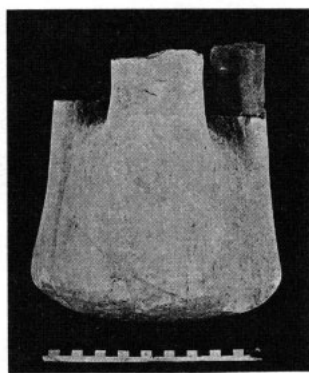
*a.* G 4340, Alabaster model basins.



*b.* G 4640 A, Two alabaster bowls and cylindrical jar.



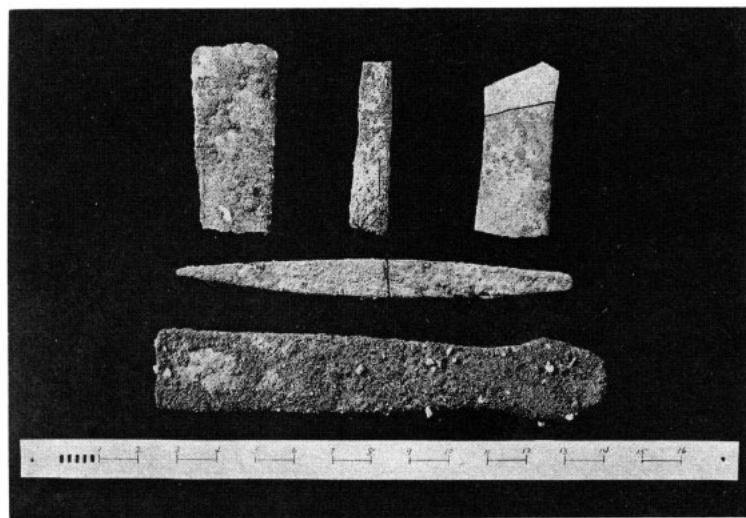
*c.* G 4240, Alabaster bowl and cylindrical jar.



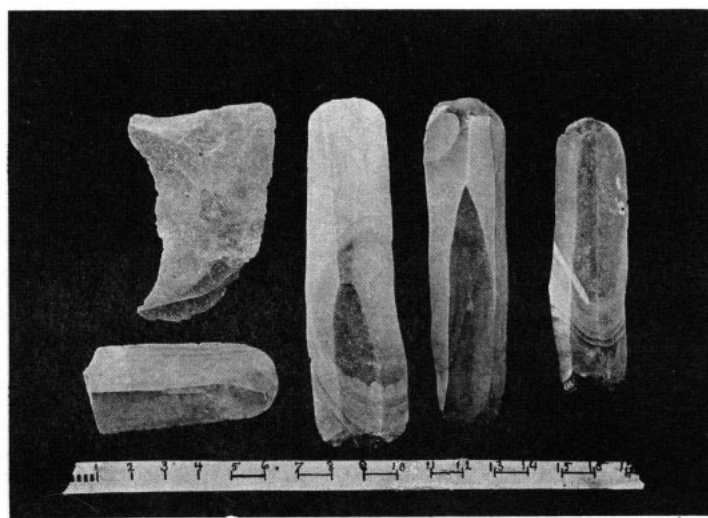
*d.* G 4140 A, Half of two-handled hammer of white limestone.



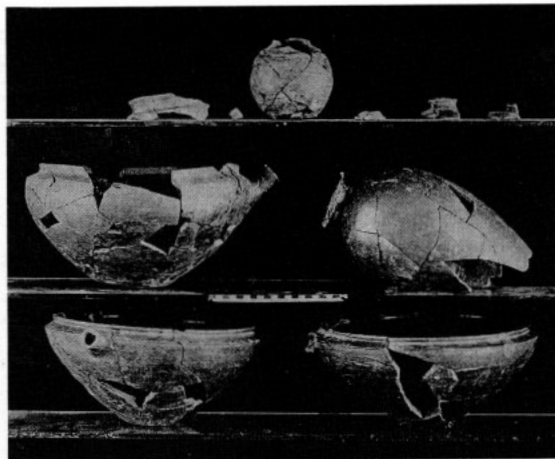
*e.* G 4140 A, Alabaster model vessels.



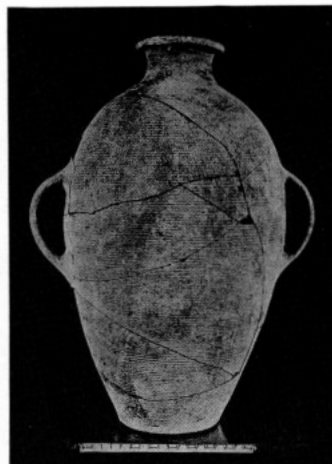
*f.* G 4140 A, Copper model tools.



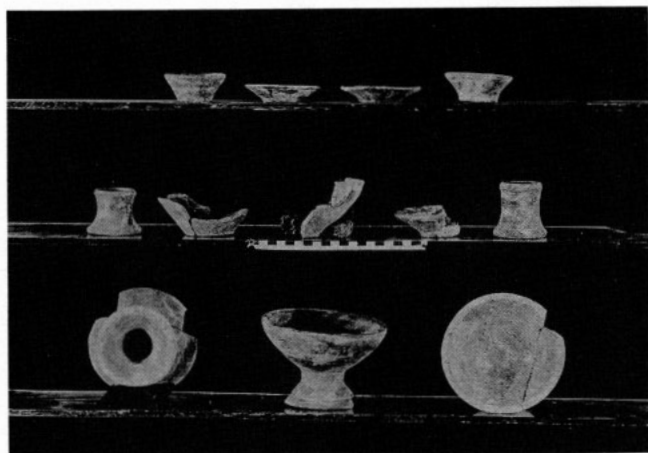
*g.* Flints from G 4240, 4440, and 4640.



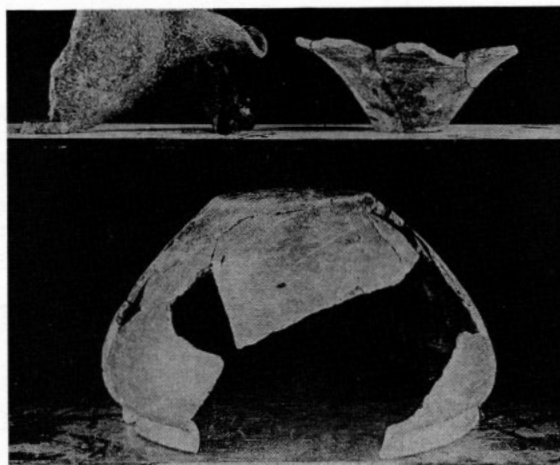
a. G 4340 A, Pottery.



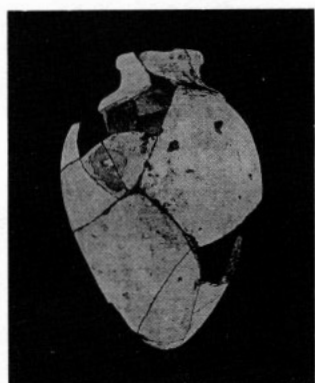
b. G 4440 A, Two-handled oil-jar (type B-LIV).



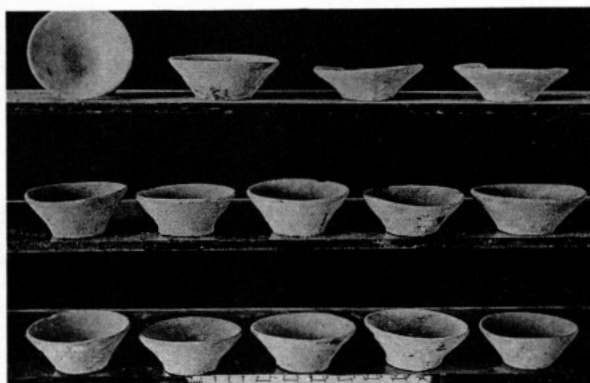
c. G 4340 A, Pottery.



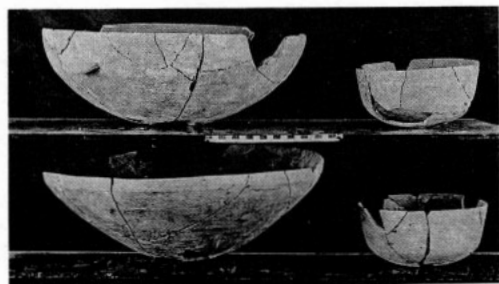
d. G 4240 A, Pottery.



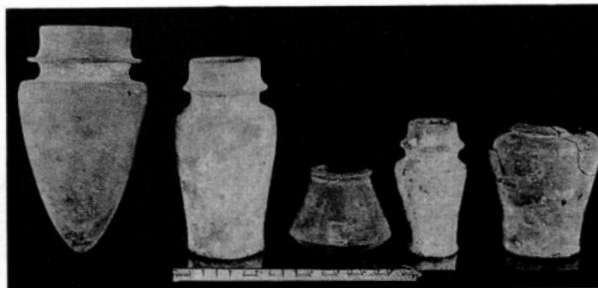
e. G 4140 A, Wine-jar, type A-II b.



f. G 4540, Pottery, model basins.



g. G 4340 A, Pottery bowls of type C-LXI d, e, and f.



h. G 4440 A, Pottery, model jars.



*a.* G 4330, East face, looking SSW: 1914.



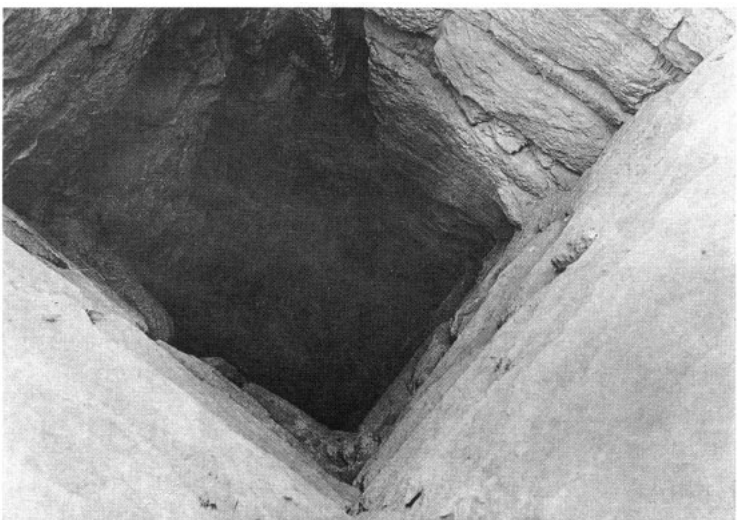
*b.* G 4330 A, Thieves' debris in chamber: 1913.



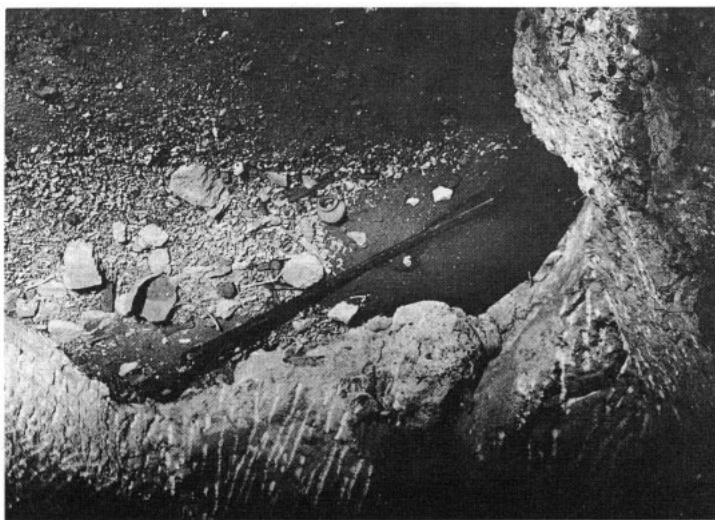
*c.* G 4430, Chapel, looking west: 1914.



*d.* G 4530, Chapel, looking north in street from point east of G 4520: 1914.



*e.* G 4530 A, looking down shaft: 1914.



*f.* G 4530 A, Burial-chamber, looking SW: 1914.