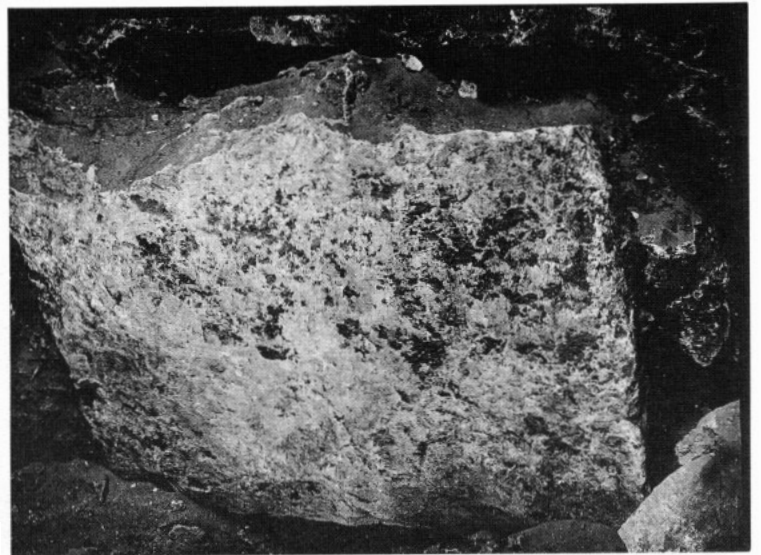
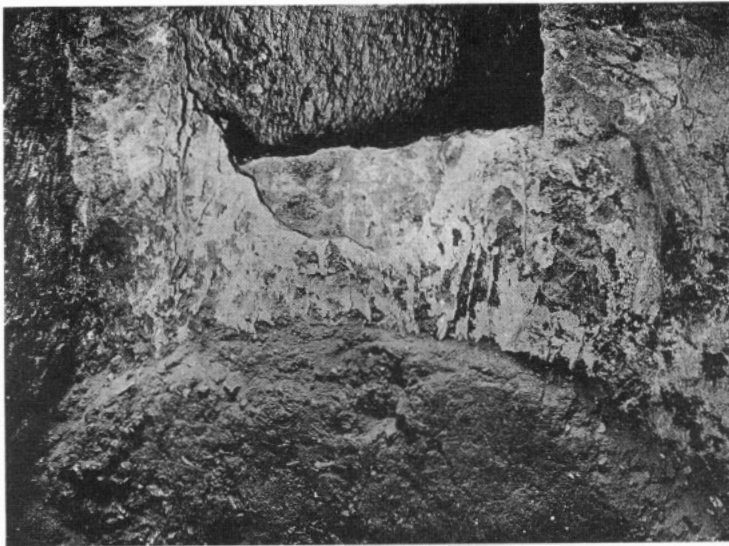




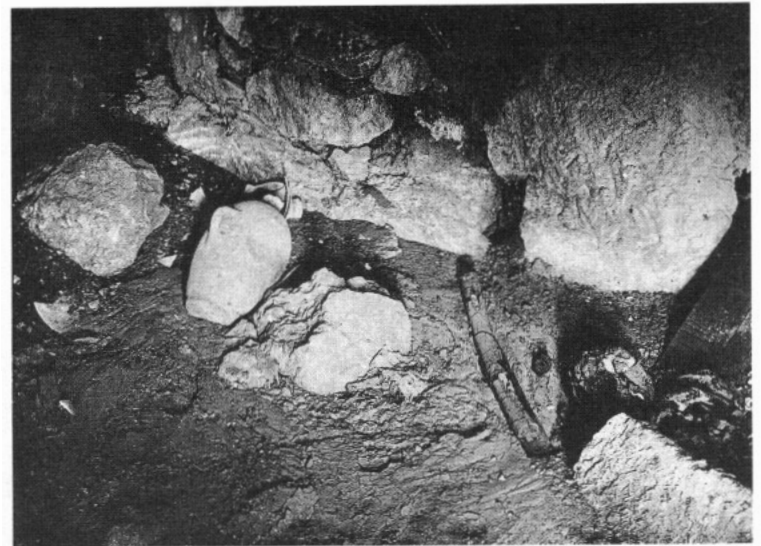
*a.* G 4630, Chapel, looking down to west: 1914.



*b.* G 4630 A, Portcullis slab, looking south: 1914.



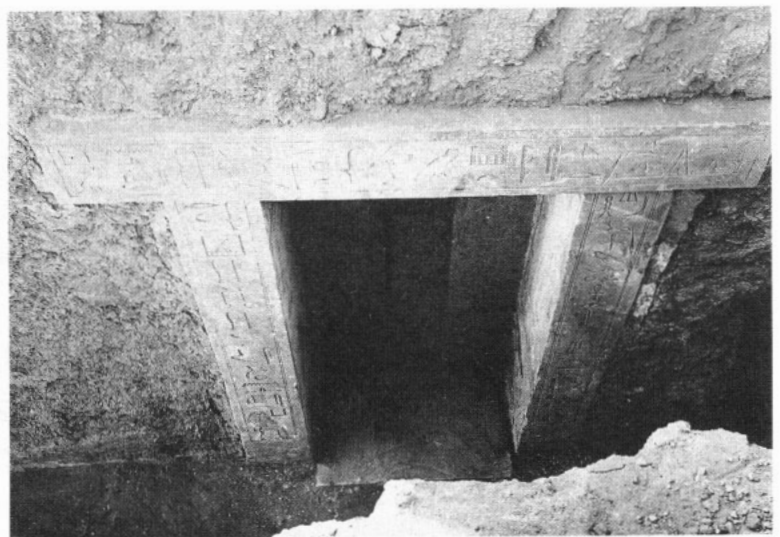
*c.* G 4630 A, Blocking, looking south: 1914.



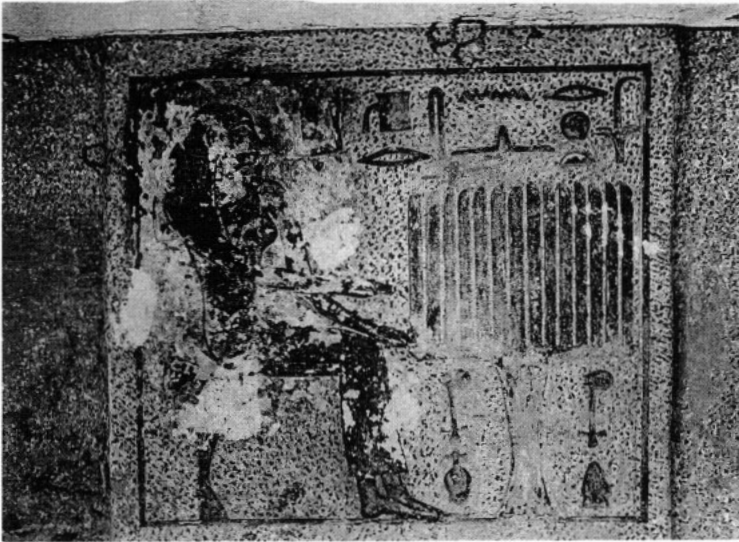
*d.* G 4630 A, Floor debris in chamber, looking NW: 1914.



*e.* G 4630 and G 4631, Looking NNW: 1914.



*f.* G 4631, Ka-door, looking down to west: 1914.



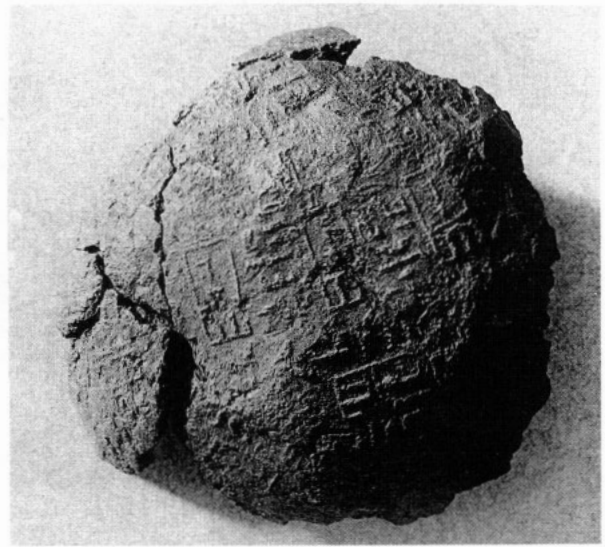
a. G 4631, Tablet of *ka*-door: 1914.



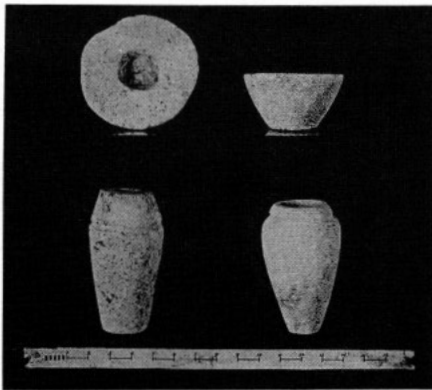
b. G 4730, Street on east, looking south: 1914.



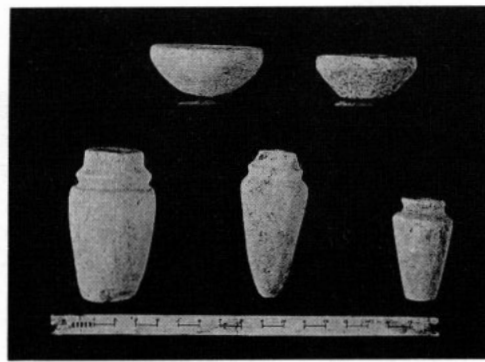
c. G 4830, Street on east, looking north: 1914.



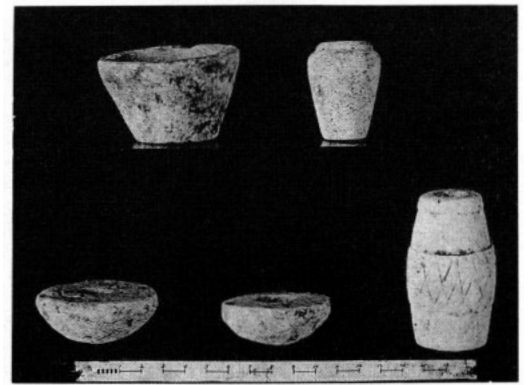
d. G 4430 A, Mud sealing of Chephren.



e. G 4530 A, Limestone models.



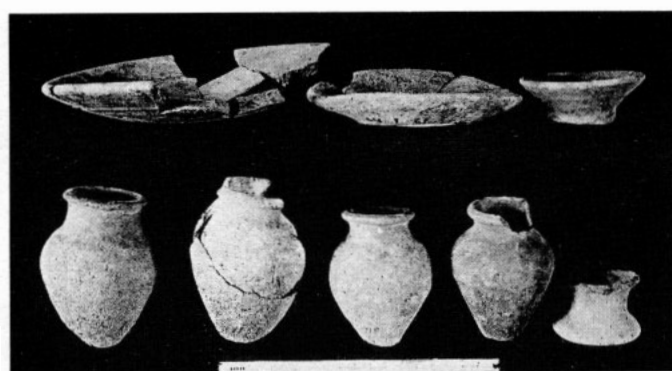
f. G 4530 A, Limestone models.



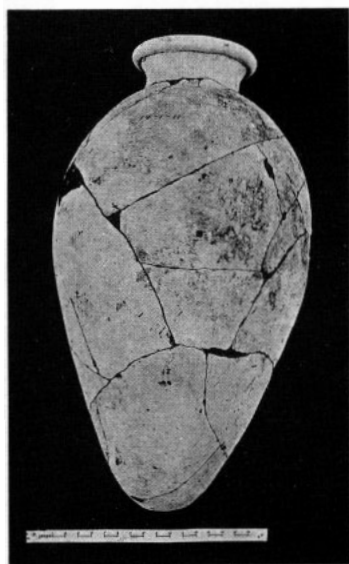
g. G 4530 A, Limestone models.



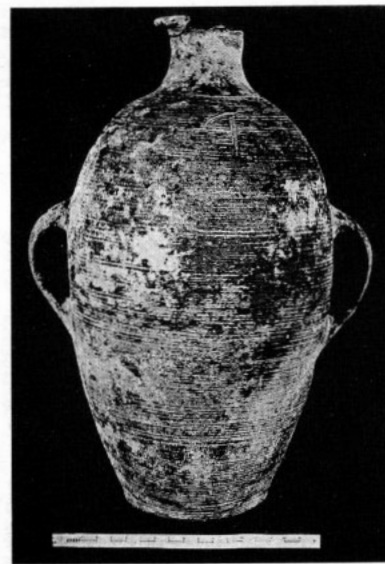
a. G 4530 A, Limestone model vessels.



b. G 4530 A, Pottery models, basins and jars.



c. G 4630 A, Wine-jar of type A-II b.



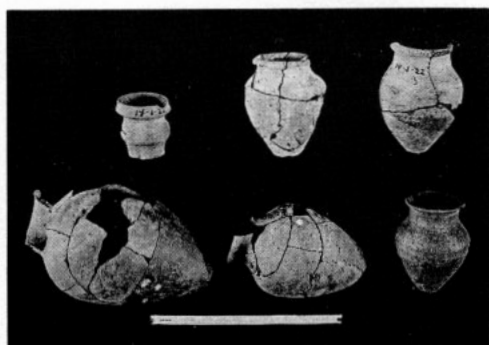
d. G 4630 A, Two-handled oil-jar of type B-LIV.



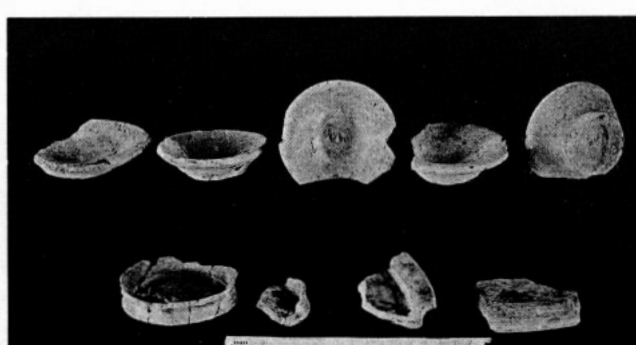
e. G 4630, Basin with short tubular spout, type D-XXXV a.



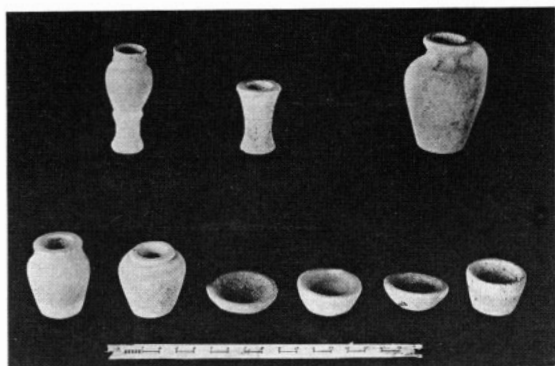
f. G 4630 A, Dish of type D-LXXV.



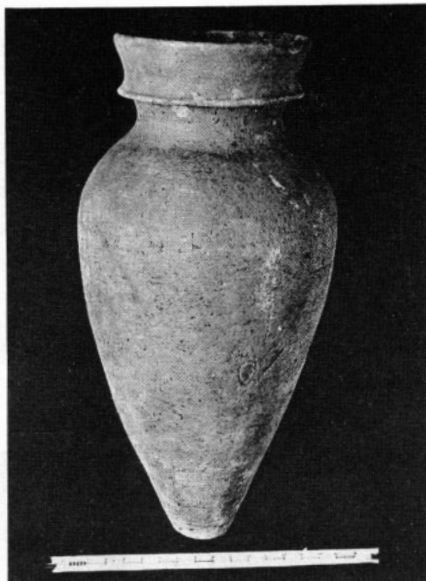
g. G 4630 A, Pottery and models.



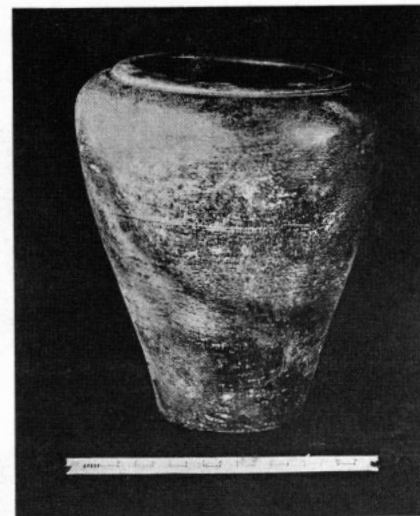
h. G 4630 A, Model basins.



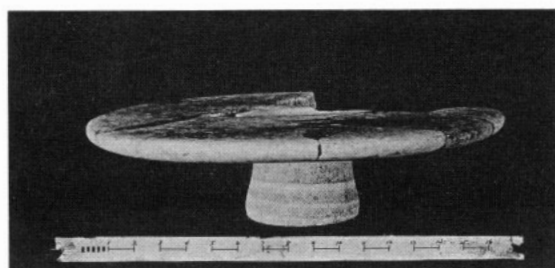
a. G 4631 B, Alabaster models



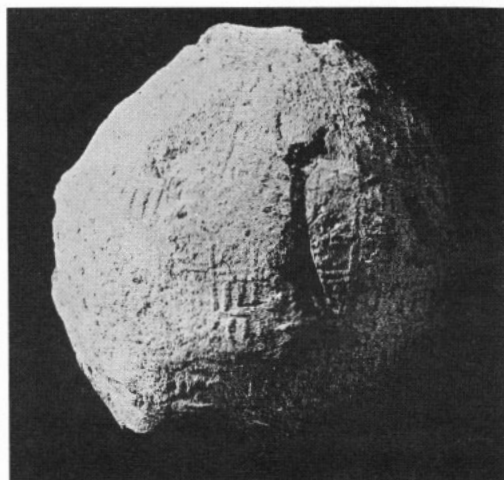
b. G 4631 B, Jar of type B-LVI a.



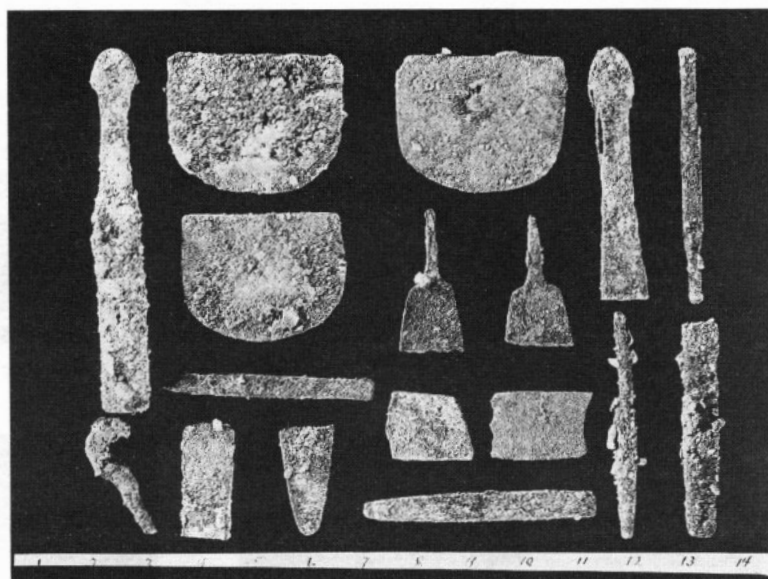
c. G 4631 B, Neckless shoulder jar, RP, type B-LV.



d. G 4631 B, Alabaster table, type S XII b.



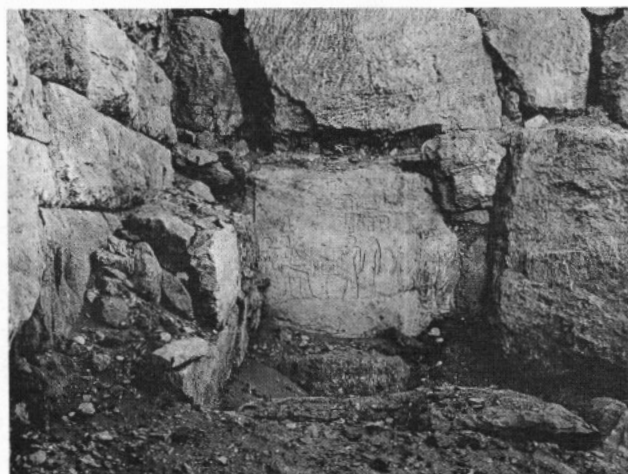
e. G 4631 B, Mud sealing of Weserkaf.



f. G 4631 B, Copper model tools.



g. G 4320, East face with two niches, looking west: 1937.



h. G 4420, Table scene inscribed at south end of east face: 1915.



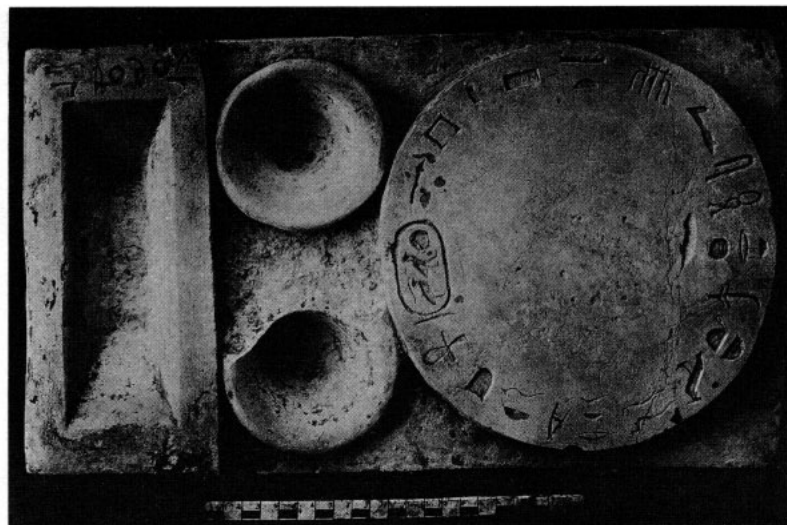
*a.* G 4520, Chapel, looking west: 1914.



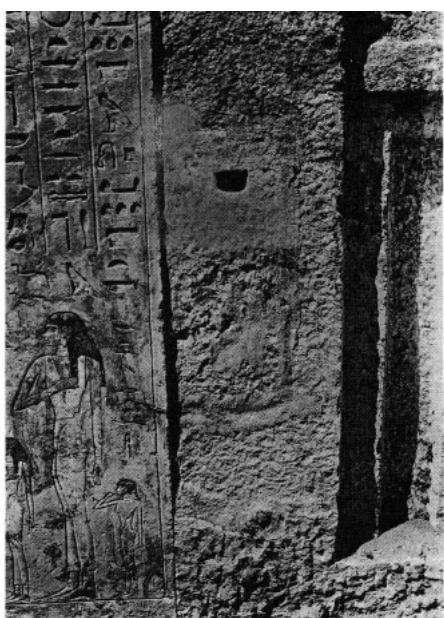
*b.* G 4520, Monolithic stela of Khufuw-ankh:  
1914.



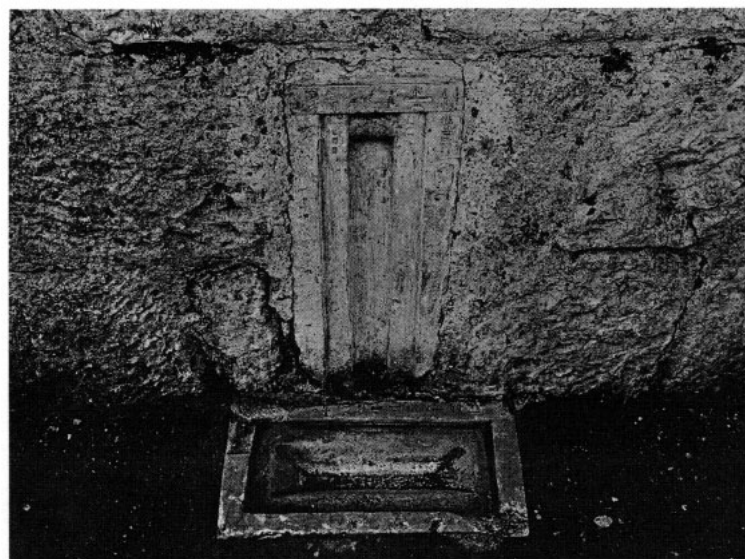
*a.* G 4520, East face of mastaba and chapel, looking SW: 1914.



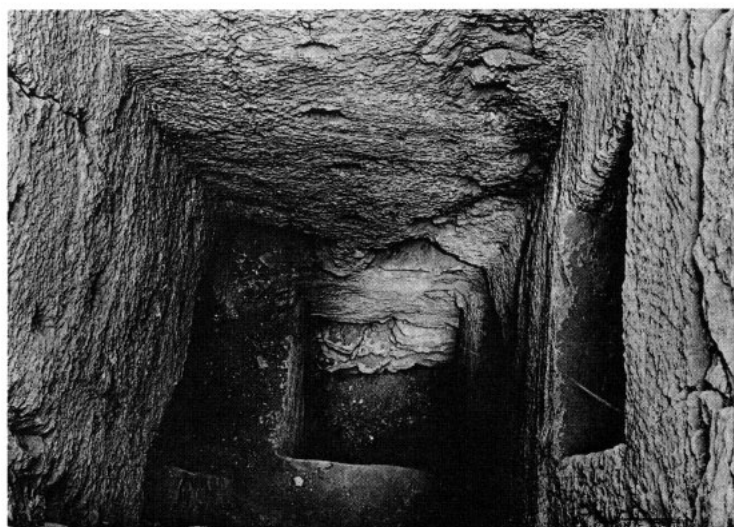
*b.* G 4520, Offering-stone in front of great stela: 1915.



*c.* G 4520, Serdab between the two niches, looking west: 1914.



*d.* G 4520, Stela in west wall of vestibule, looking west: 1914.



*e.* G 4520, Looking down shaft to west: 1914.



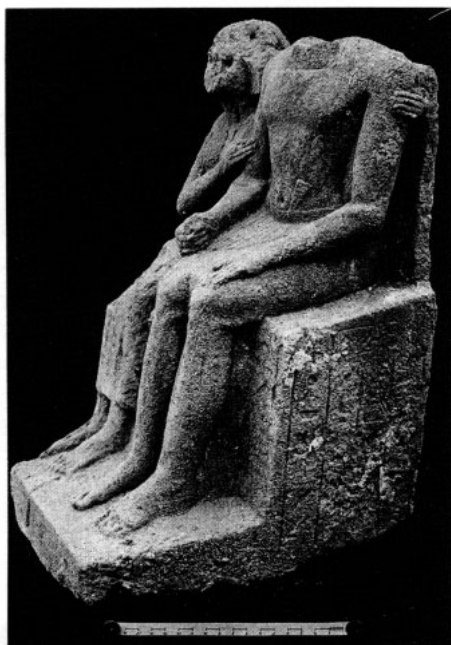
*f.* G 4520 A, Objects in NE corner of chamber: 1914.



*a.* G 4520 A, Wooden coffin in chamber, looking NW: 1914.



*b.* G 4520 A, Burial in coffin, looking north.



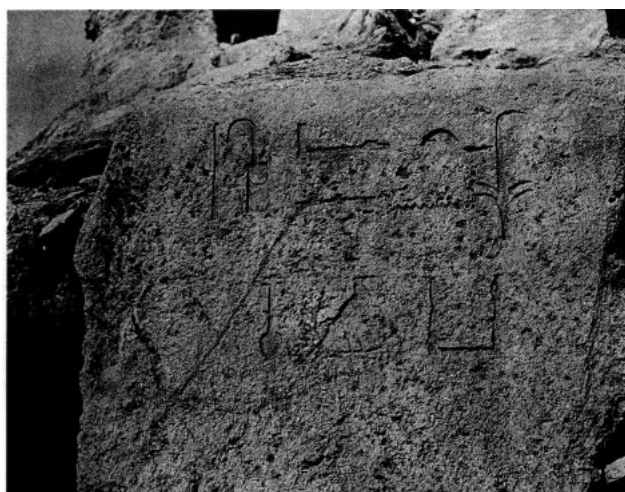
*c.* G 4520, Reg. No. 14-3-4, Pair statuette of Khufu-ankh and wife, made by son, found NE of mastaba in debris.



*d.* G 4520, Reg. No. 14-3-16, Pair statuette of Kap and wife, found NE of mastaba in debris.



*e.* Male torso and female head found in debris east of G 4522.



*f.* G 4620, Inscription of Kanofer on east face of SE corner of core of mastaba.



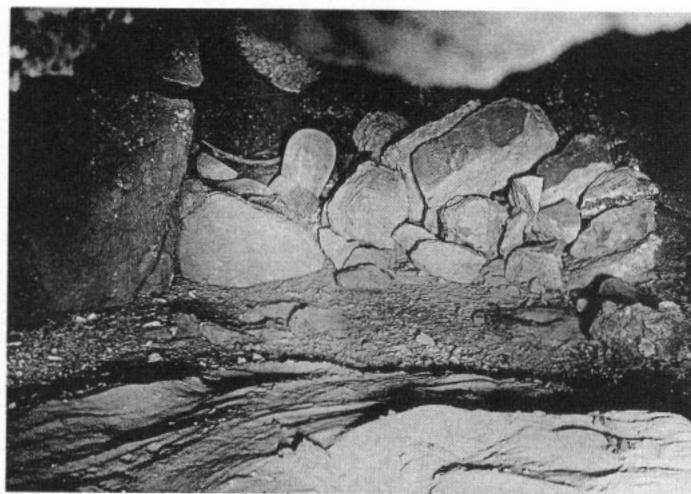
a. G 4620 A, Blocking of type II c (2) penetrated by thieves, looking south: 1914.



b. G 4620 A, Thieves' debris in chamber, looking down to south: 1914.



c. G 4720 A, Blocking of type III c (1): 1914.



d. G 4720 A, Thieves' debris in chamber: 1914.

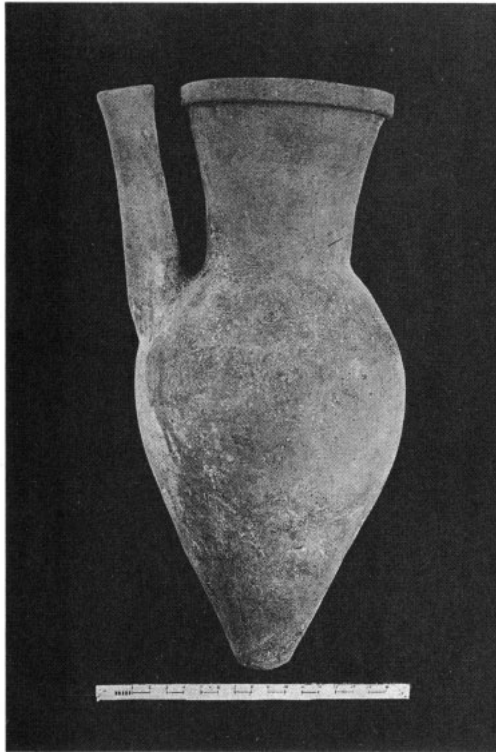


e. G 4820, Chapel, looking down to NW: 1915.

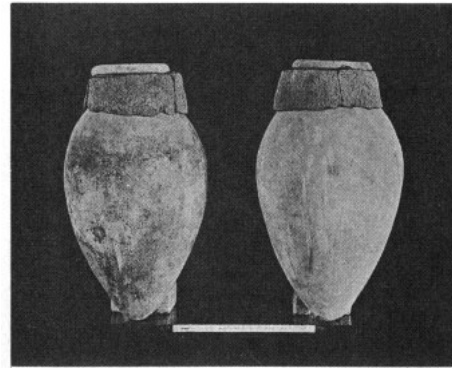


f. G 4520 A (3), Alabaster model vessels: 1914.





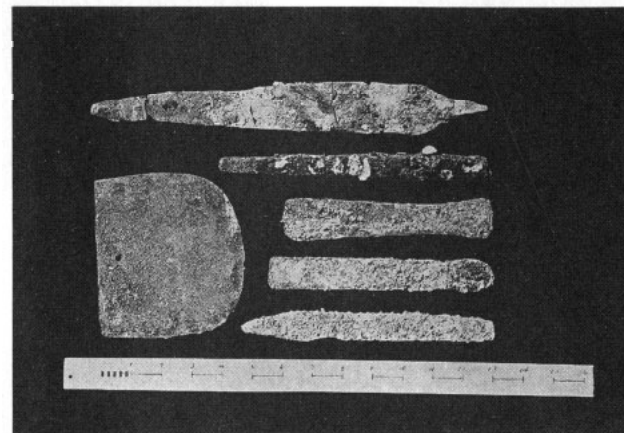
*a.* G 4520 A, Jar of type B-LIX b: 1914.



*b.* G 4520 A, Two jars of type A-II b: 1914.



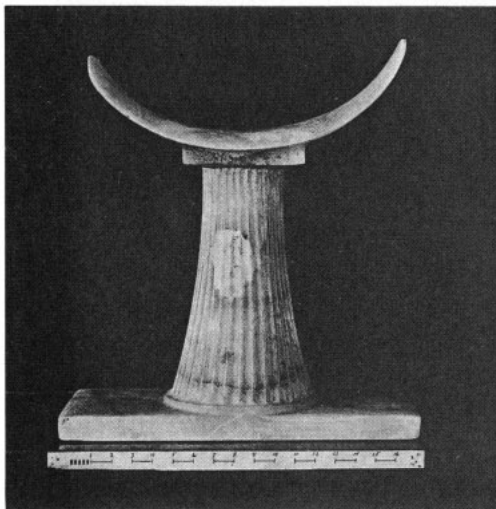
*c.* G 4520 A, Pottery model vessels: 1914.



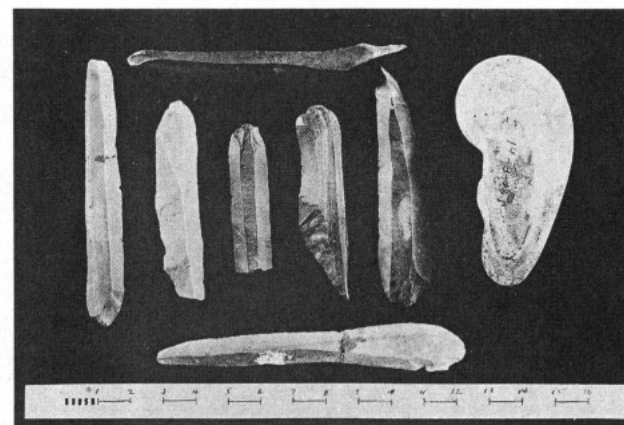
*e.* G 4520 A, Copper model tools: 1914.



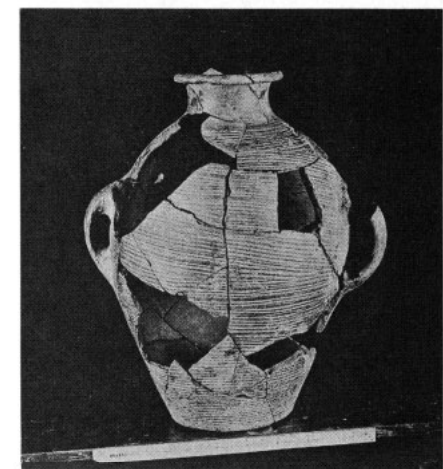
*g.* G 4620, Pottery type D-XXXIX b and A-LI b: 1914.



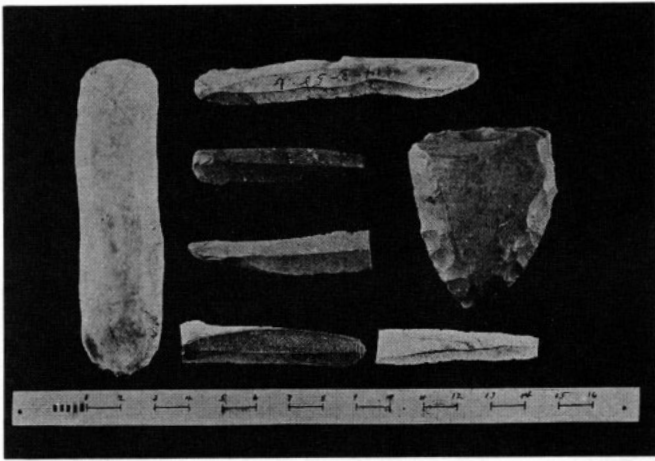
*d.* G 4520 A, Alabaster head-rest: 1914.



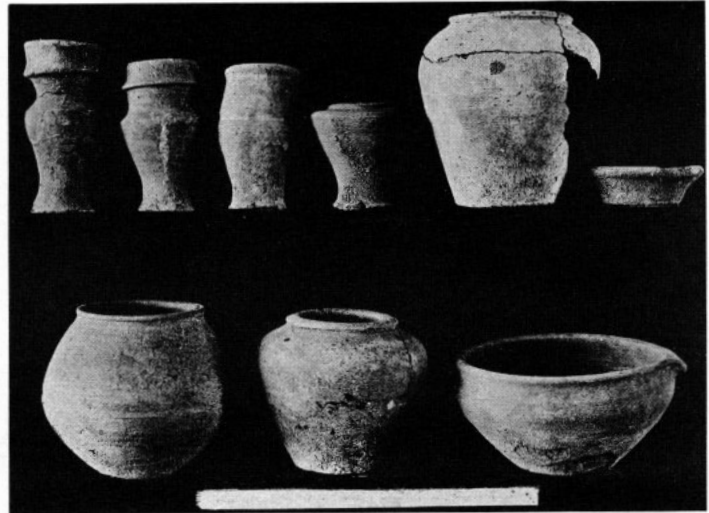
*f.* G 4620 A, Flint flakes and limestone ear: 1914.



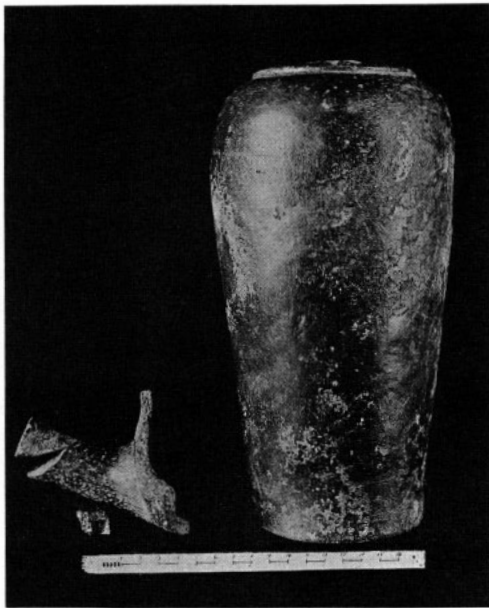
*h.* G 4620 A, Two-handled oil-jar, type B-LIV: 1914.



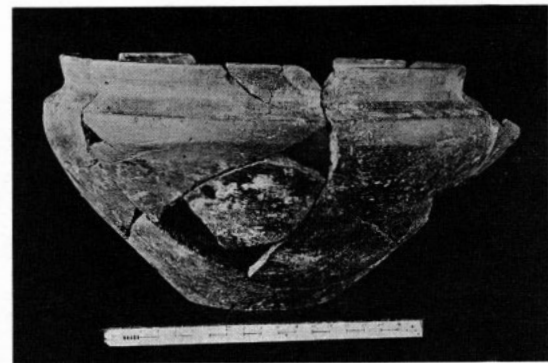
a. Flint flakes from G 4620 and 4720: 1914.



b. G 4720, Pottery model vessels: 1914.



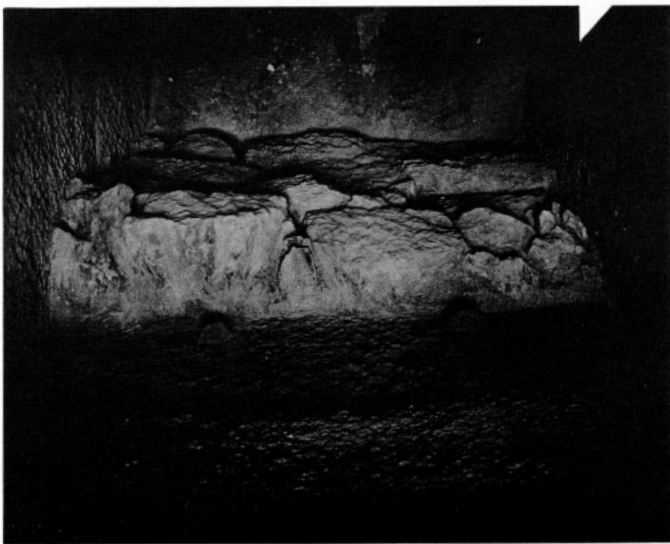
c. G 4720, Neckless shoulder jar, type B-LV b (RP): 1914.



d. G 4720 A, Basin, type D-XXXVI a: 1914.



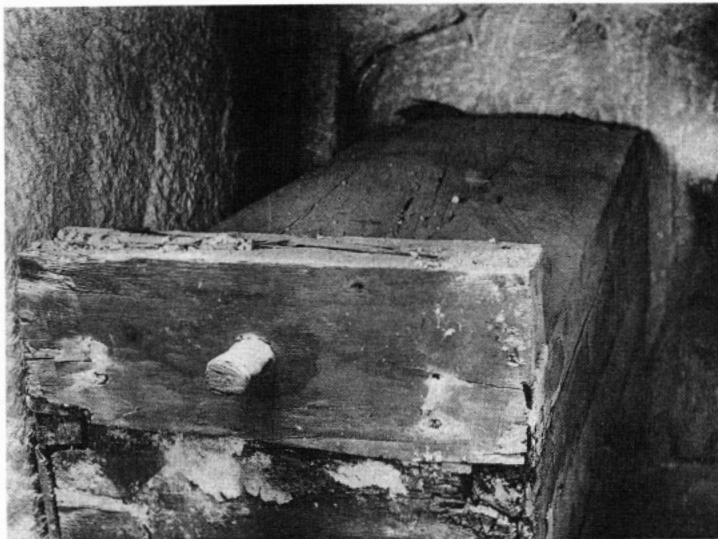
e. G 4720 A, Two basins, type D-XXXV a: 1914.



g. G 4310 A, Blocking of type IV b (1): 1915.



f. G 4720 A, Bent-sided bowl, type D-LXXVI b: 1914.



a. G 4310 A, Lower chamber, coffin, looking south: 1915.



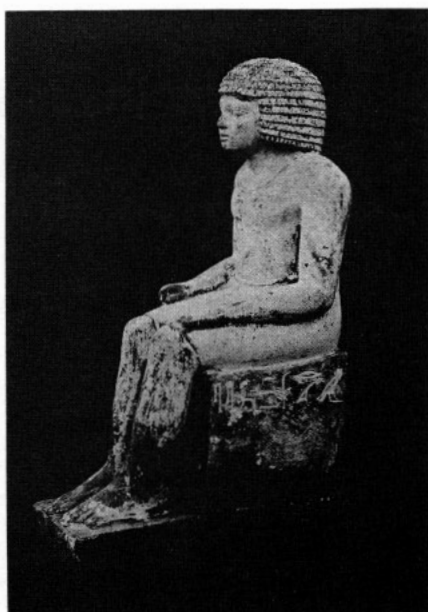
b. G 4410, Street on east, looking north: 1914-15.



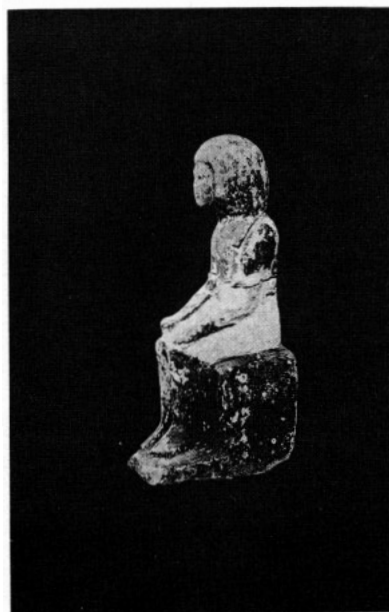
c. G 4410, Chapel of type (8 e), looking west: 1937.



d. G 4410, Offering-room with intruded statuettes, looking west: 1915.



e. G 4410, Statuette of *hm-k* Ne-shepses-nesuwt: 1915-16.



f. G 4410, Statuette of Isesy-ankh: 1915-16.



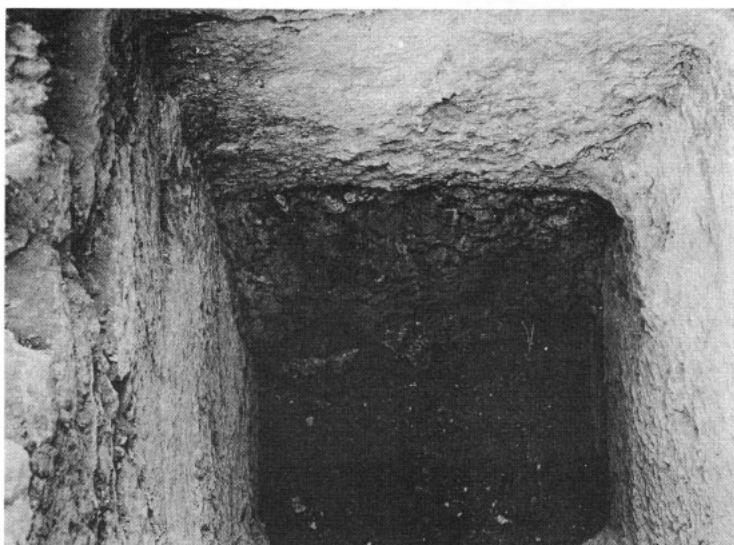
*a.* G 4411, East face, looking NW: 1915.



*b.* Street between G 4510 and 4610, looking south: 1915.



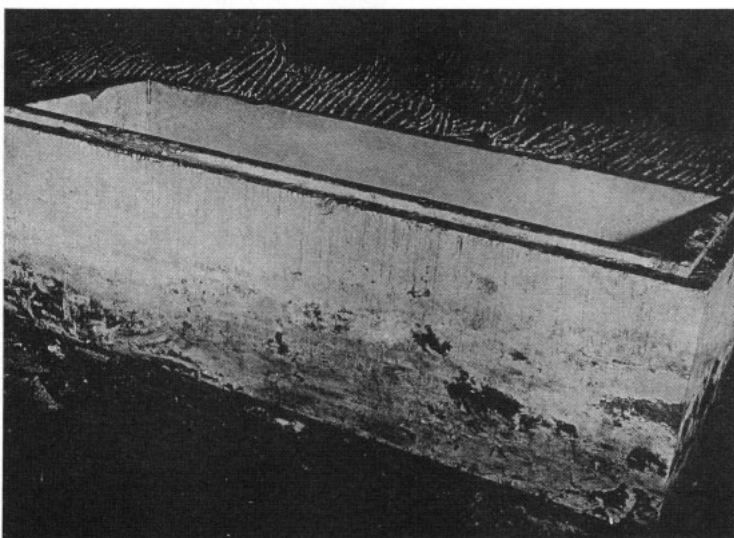
*c.* Street east of G 4610, looking north: 1915.



*d.* G 4610 A, Blocking of type II b (1): 1915.



*e.* G 4610 A, Thieves' debris in chamber: 1915.



*f.* G 4710 A, Coffin in chamber, looking SW: 1914.



*a.* G 4710 A, Disturbed skeleton in coffin: 1914.



*b.* G 4710 A, Built canopic pit in chamber, looking SE: 1914.



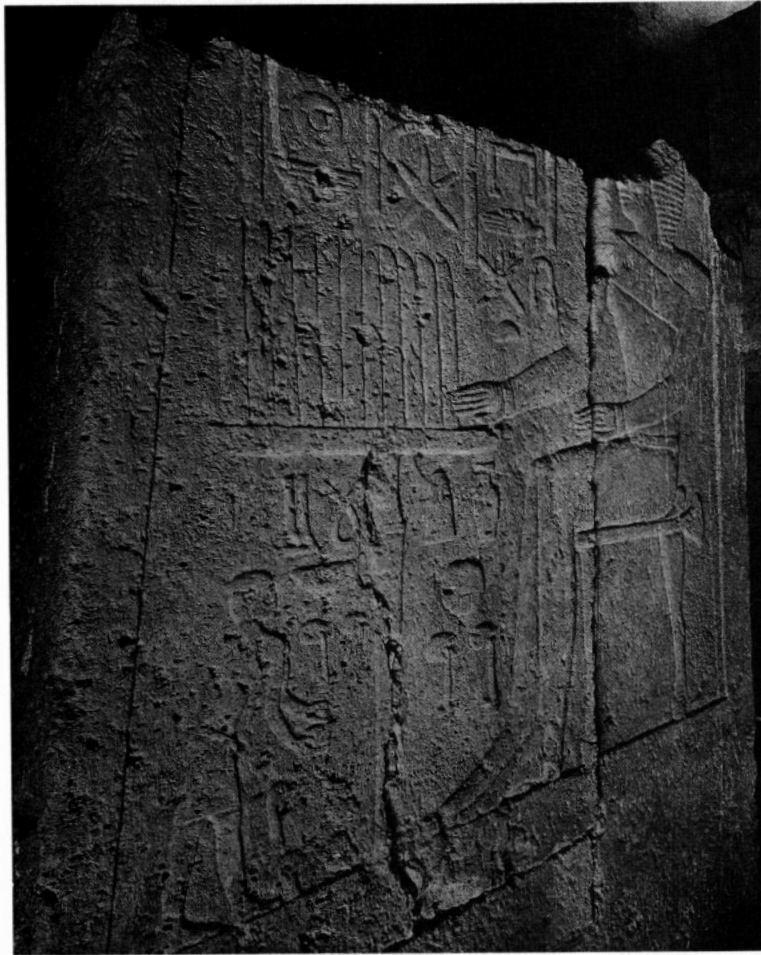
*c.* G 4710 and area east of it, looking north: 1915.



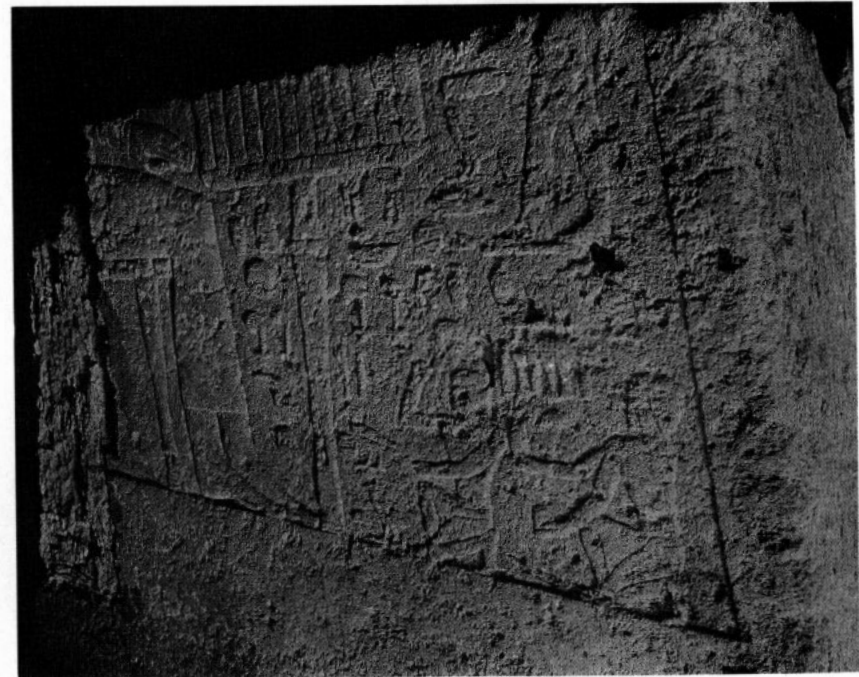
a. G 4610 A, Alabaster model vessels.



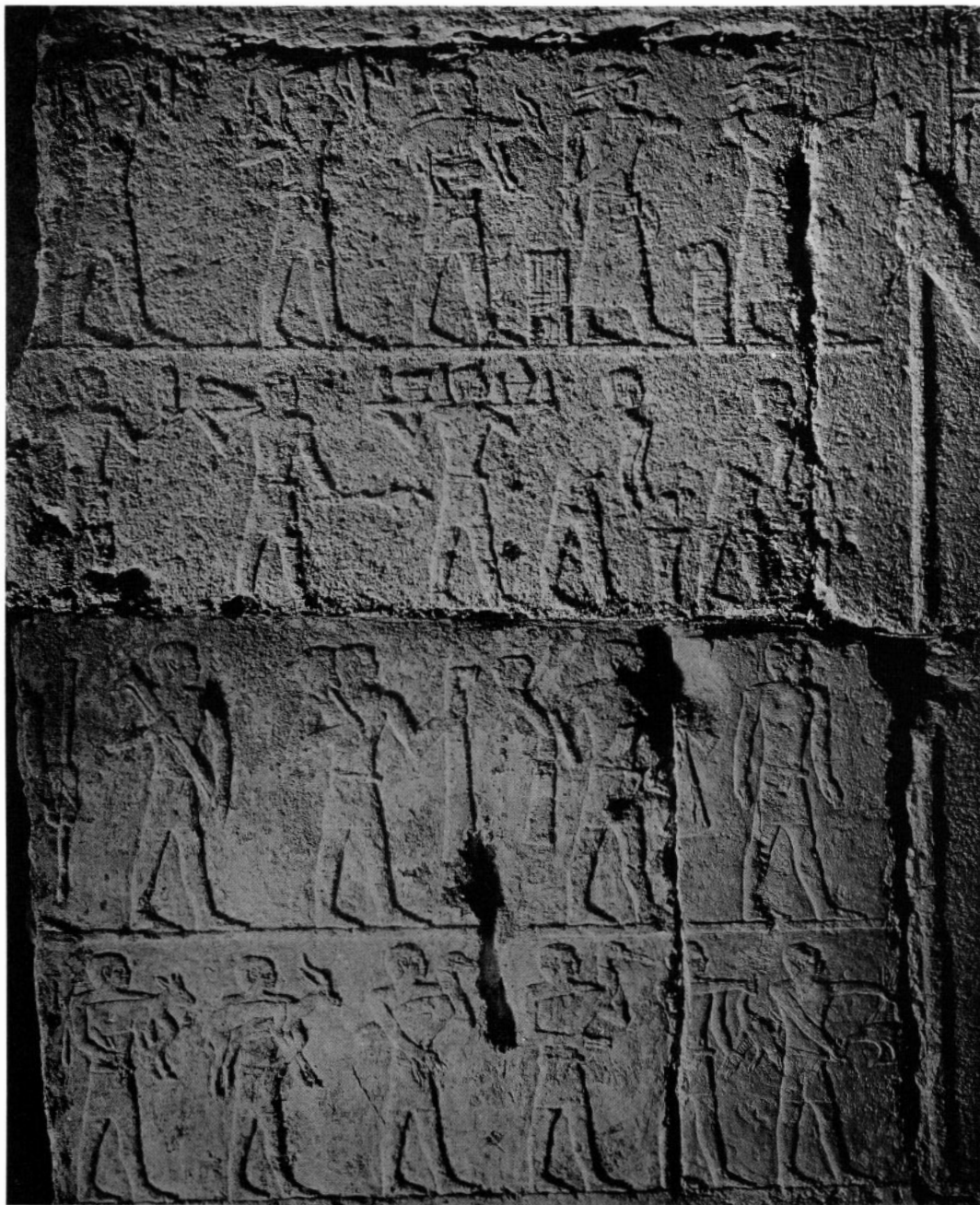
b. G 4710, Tablet of Sethuw from *ka*-door: from the collection of the New York Historical Society in the Brooklyn Museum.



c. G 4710, South jamb of entrance to interior chapel.



d. G 4710, North jamb of entrance to interior chapel.



*a.* G 4710, Chapel, reliefs on west wall.



*b.* G 4710, Large figure of owner on west wall.