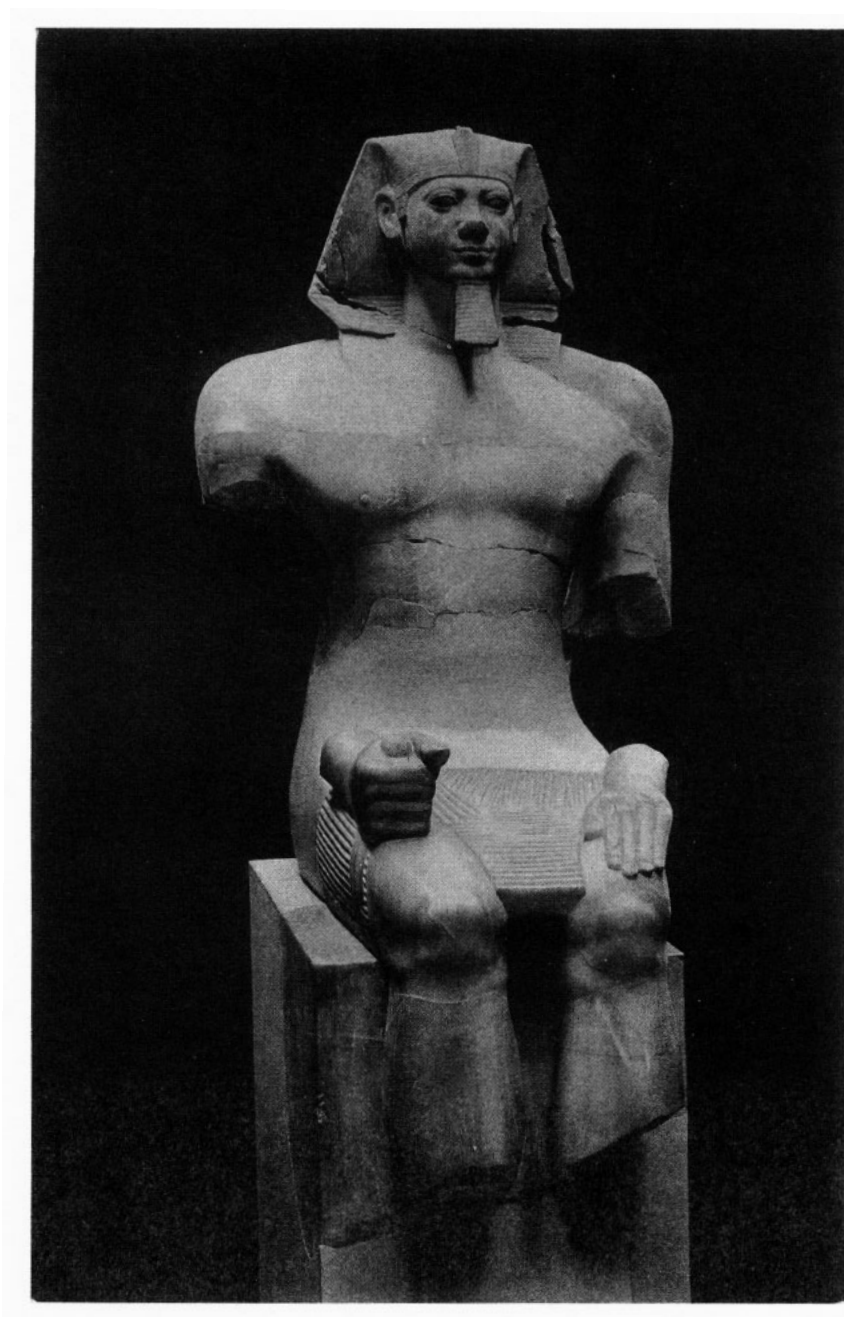




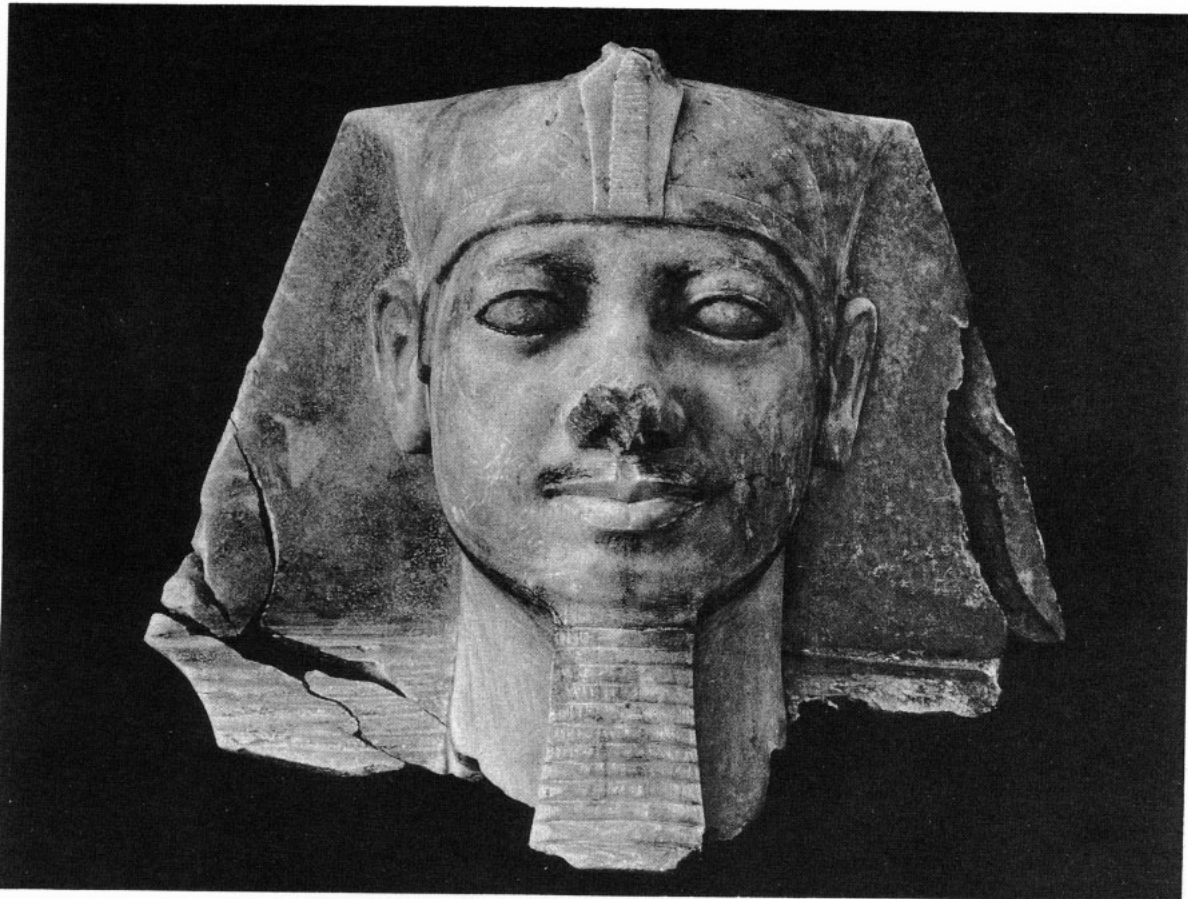
a. M. P. T., room (29), granite pavement and granite casing of pyramid, looking northwest, October 20, 1923.



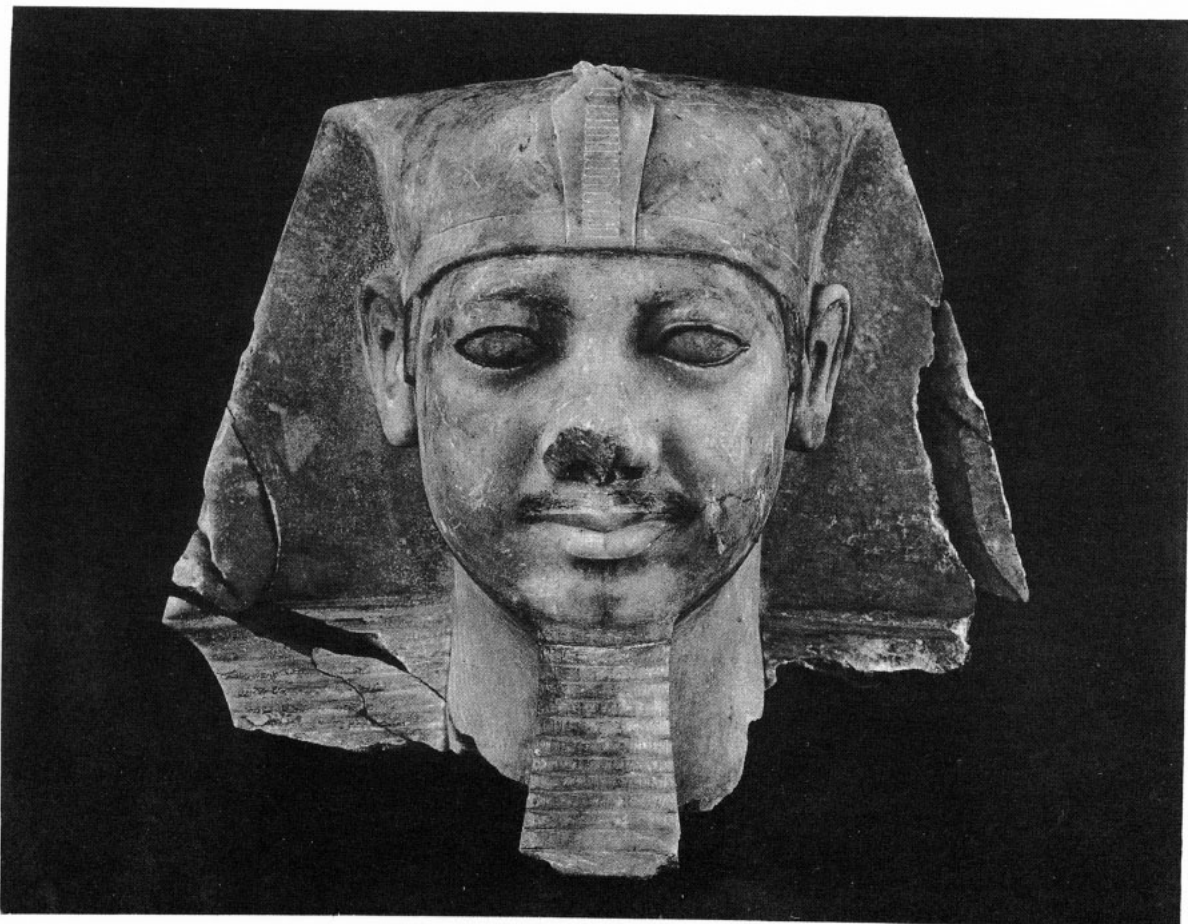
b. M. P. T., room (29), granite pavement and walls of Turah limestone, with room (27), beyond, looking down to east, October 17, 1923.



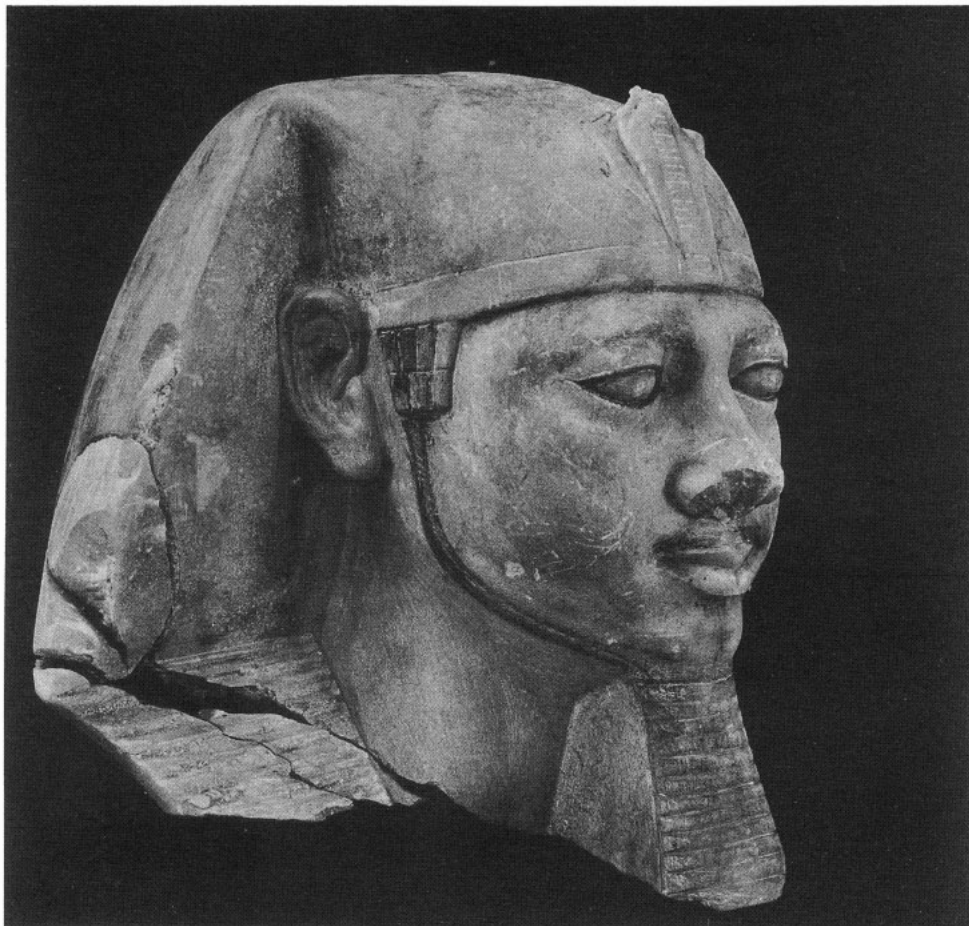
M. P. T., statue No. 1, great alabaster statue of Mycerinus.



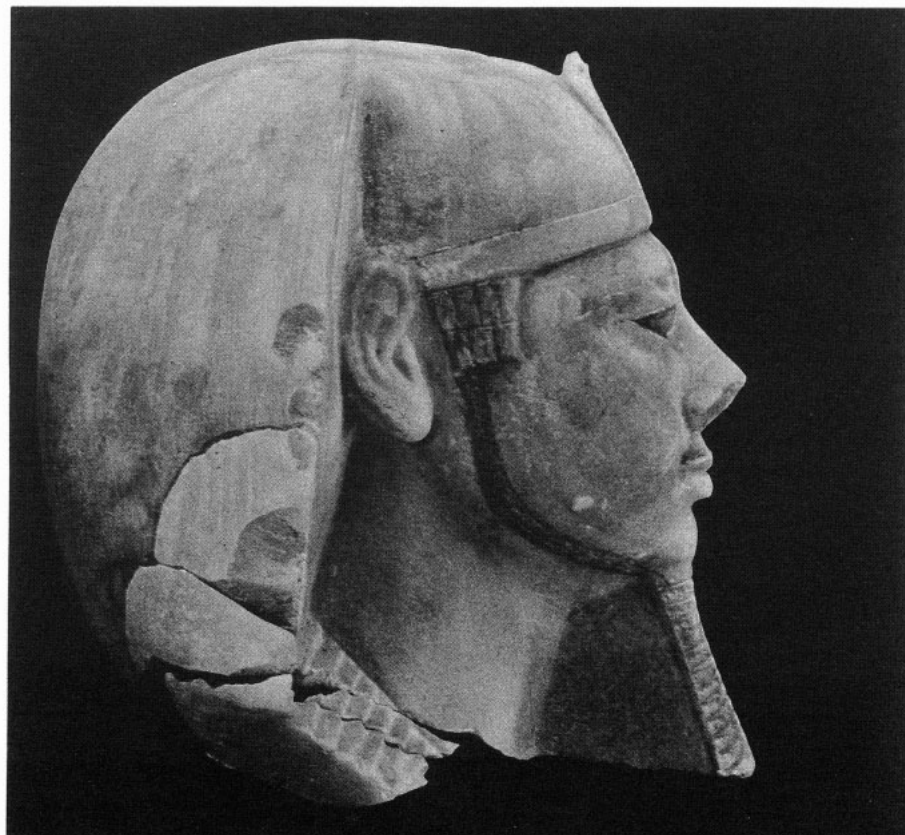
a. M. P. T., head of statue No. 1, great alabaster statue of Mycerinus, front view seen from below (view-point of beholder standing on floor).



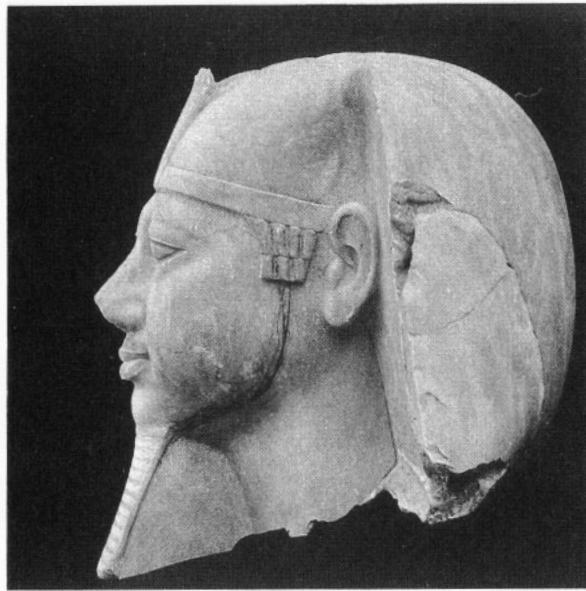
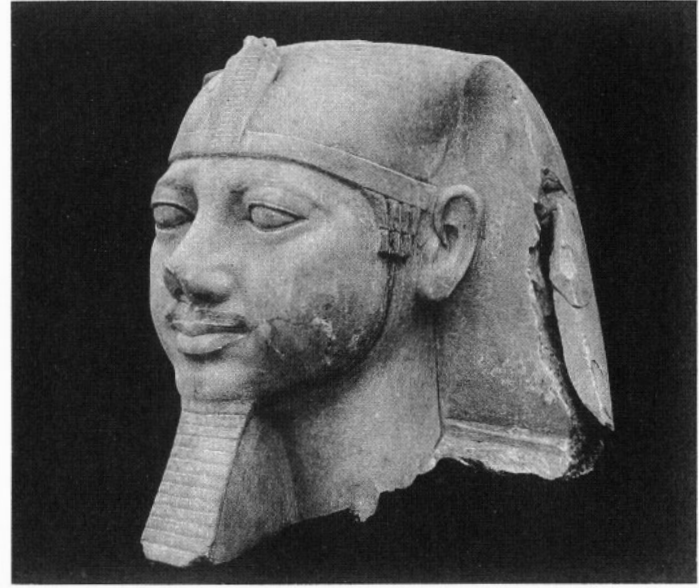
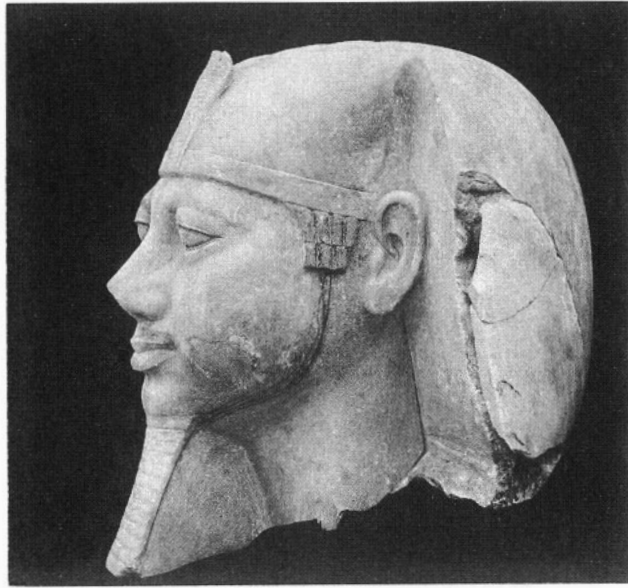
b. M. P. T., head of statue No. 1, great alabaster statue of Mycerinus, front view seen from opposite face (point of view of sculptor).



a. M. P. T., head of great alabaster statue (No. 1) of Mycerinus, right side, three quarters view.



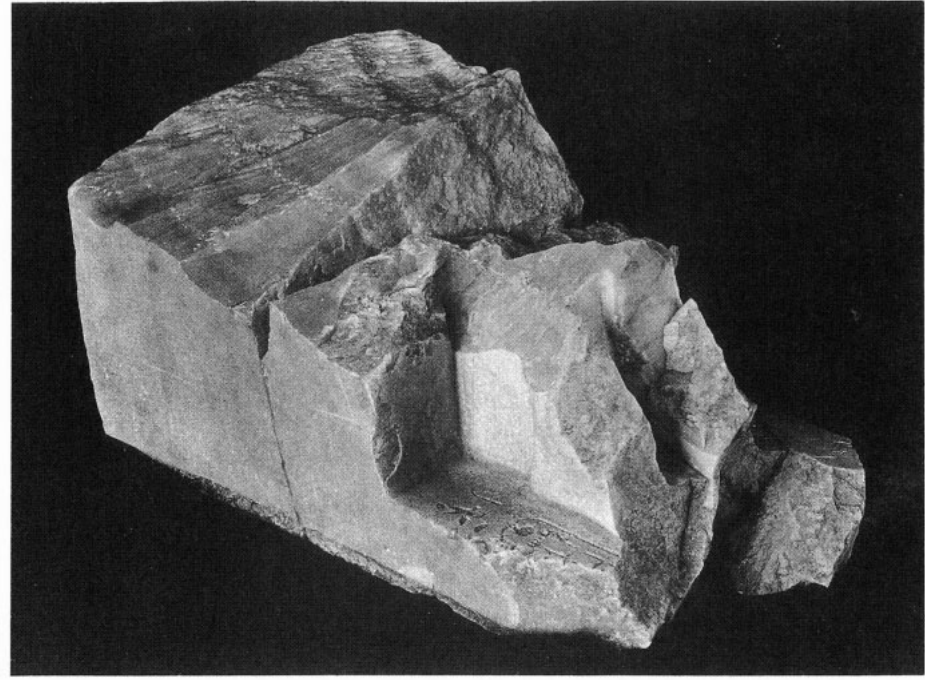
b. M. P. T., head of great alabaster statue (No. 1) of Mycerinus, profile of right side.



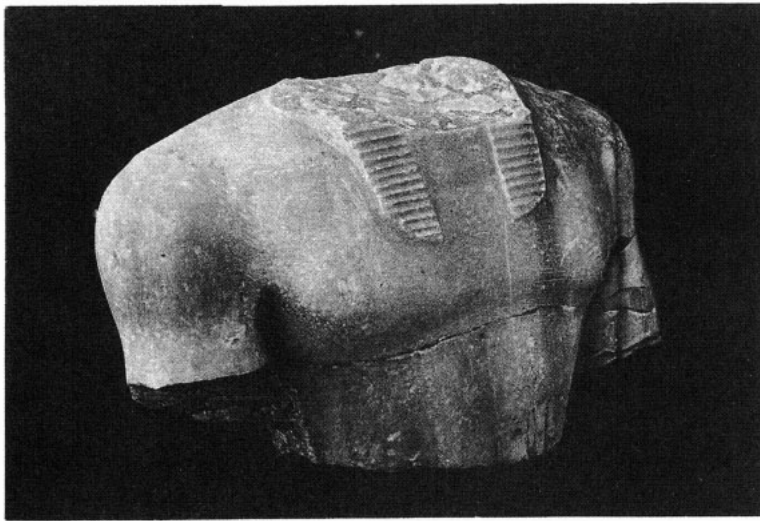
M. P. T., head of great alabaster statue (No. 1) of Mycerinus, left side, four different views.



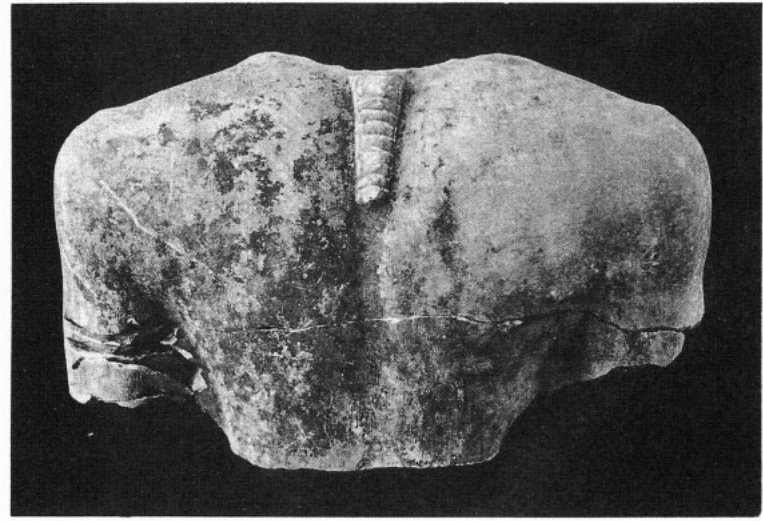
a. M. P. T., knees of great alabaster statue (No. 1) of Mycerinus.



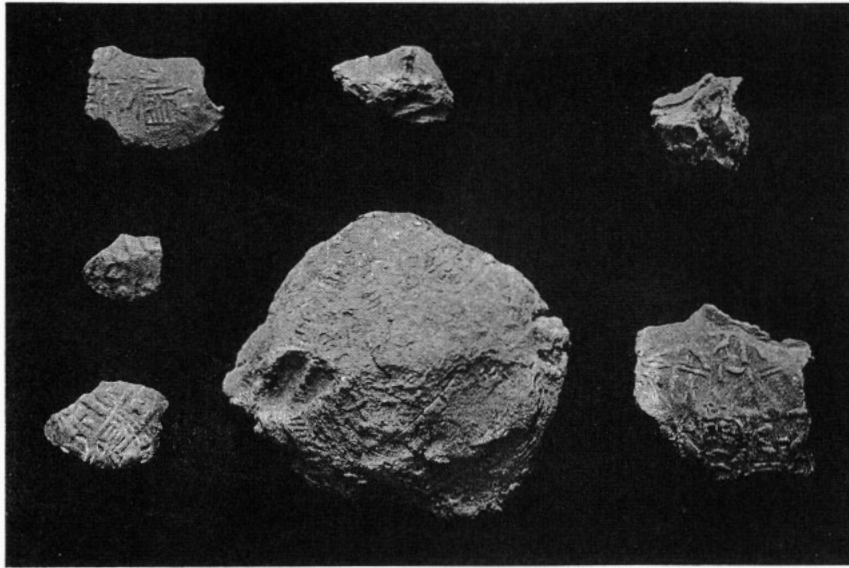
b. M. P. T., feet of smaller alabaster statue (No. 2 c) of Mycerinus.



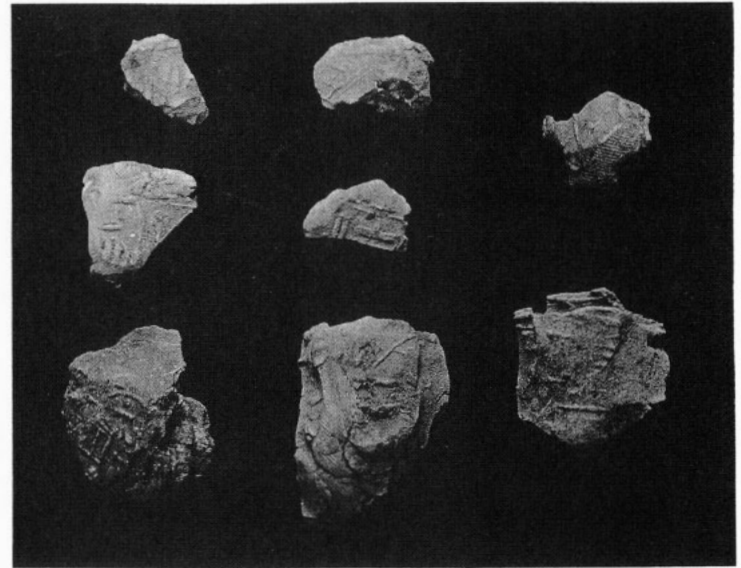
c. M. P. T., torso of smaller alabaster statue (No. 2 a), front.



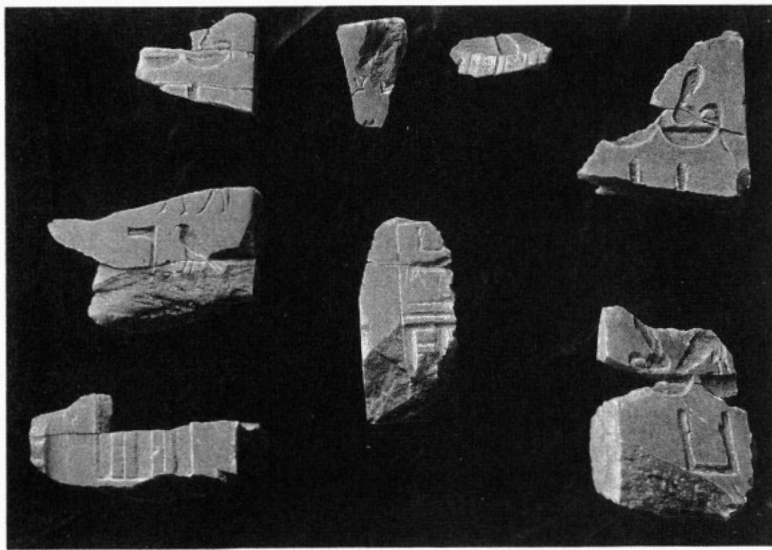
d. M. P. T., torso of smaller alabaster statue (No. 2 a), back.



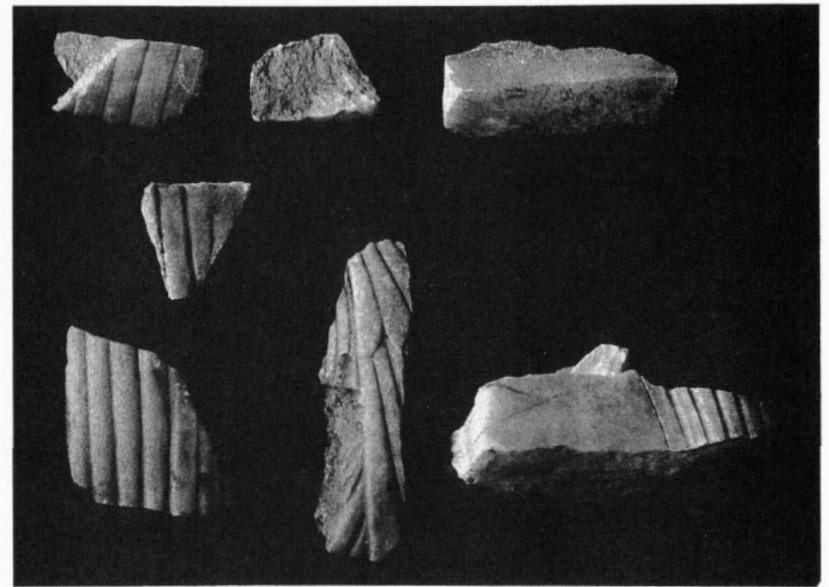
a. M. P. T., seal impressions in mud, from room (No. 22).



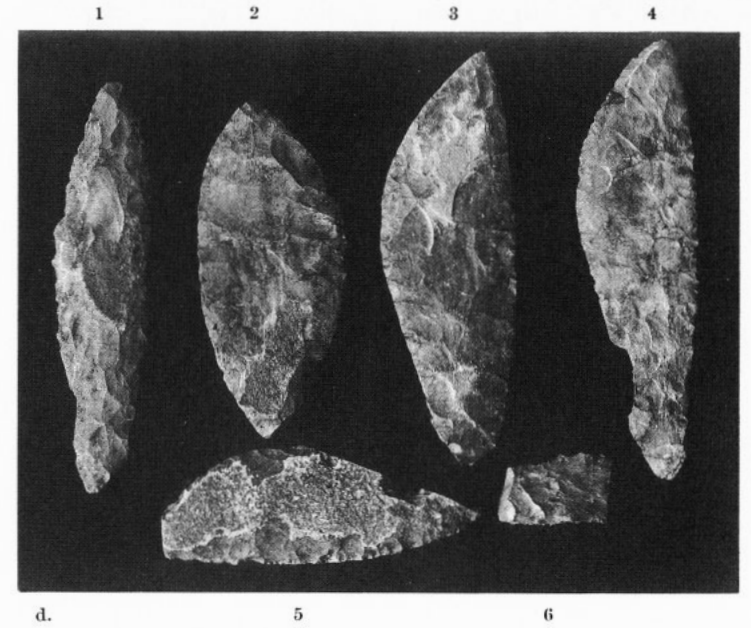
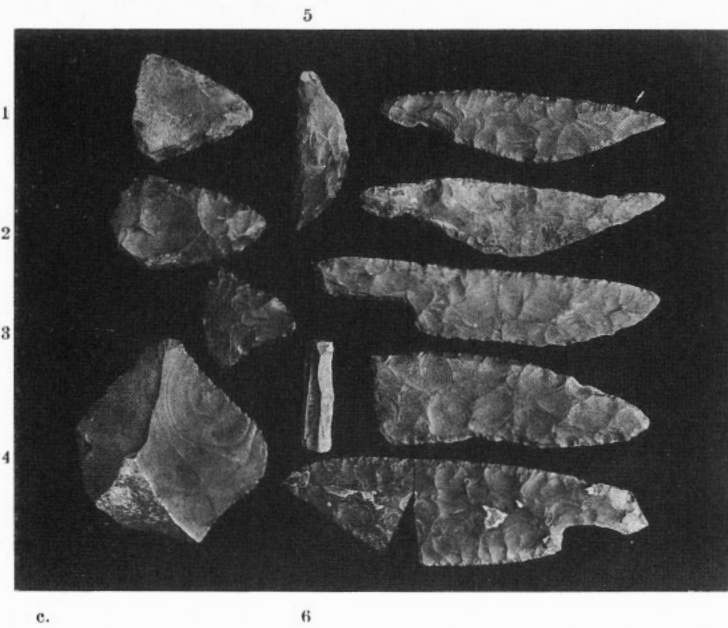
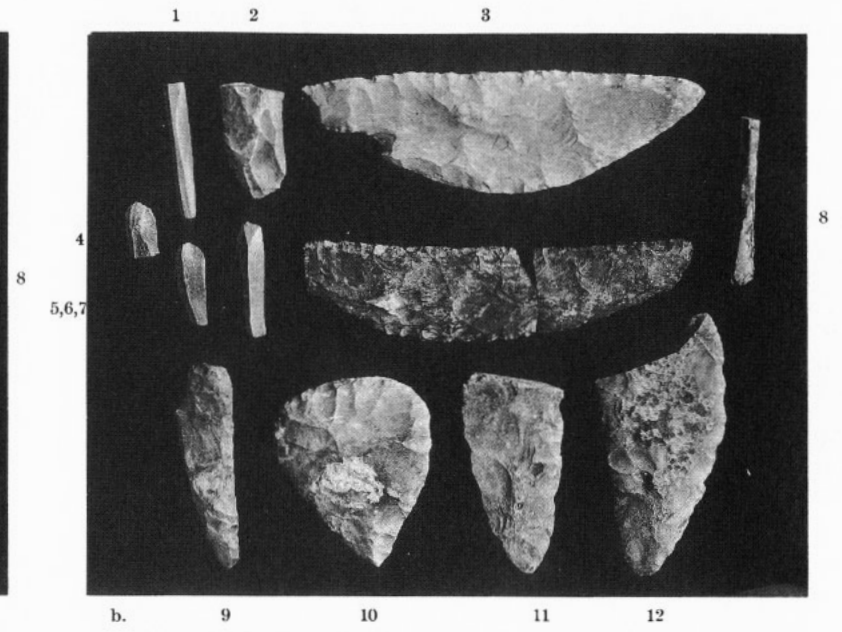
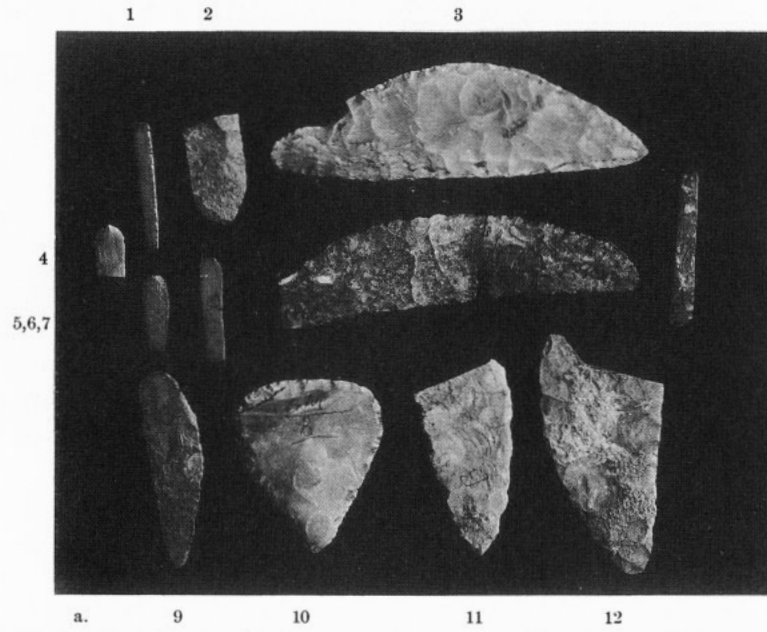
b. M. P. T., seal impressions in mud, from room (No. 22).



c. M. P. T., inscribed fragments of alabaster statue-bases.



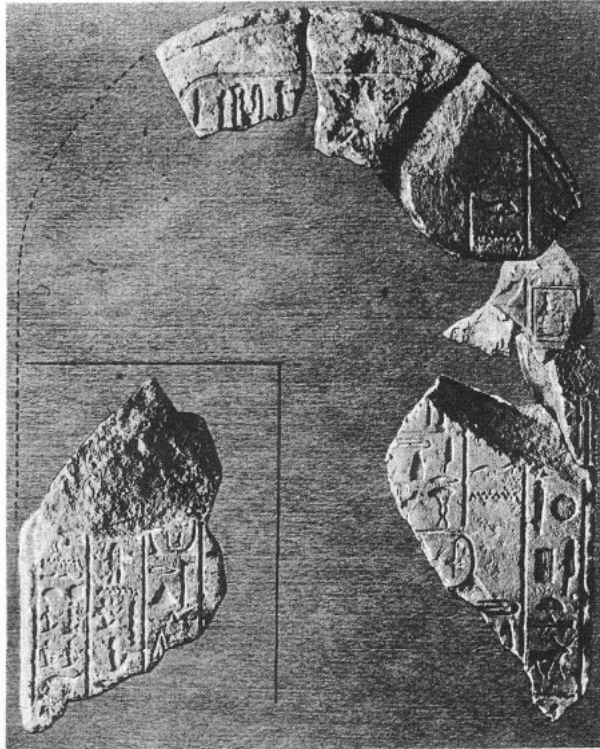
d. M. Q. T., fragments of alabaster statue of queen.



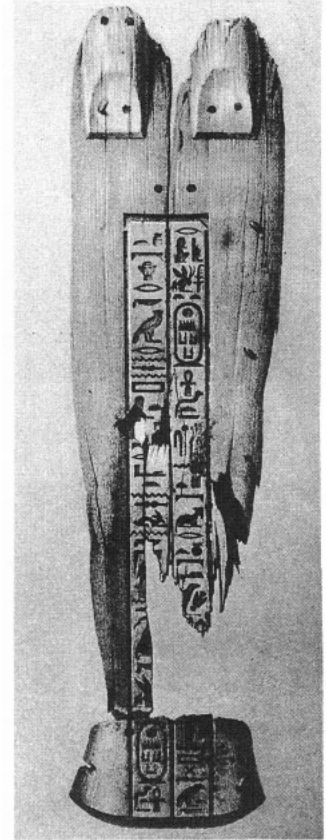
M. P. T., flint knives and flakes from temple magazines.
 a. and b. show both sides of same objects.



a. Flint wand from M. P. T., 14.



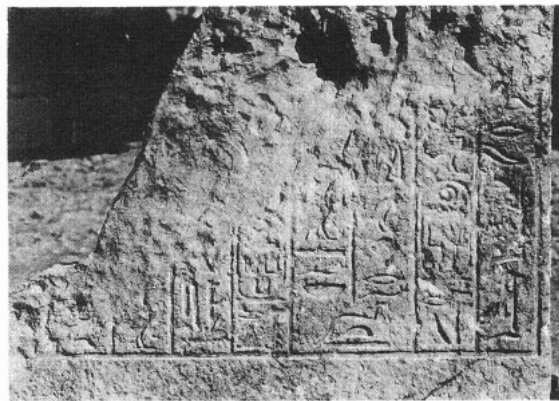
b. M. P. T., limestone stela of Shepseskaf.



c. Perring's sketch, wooden coffin-lid of Mycerinus.



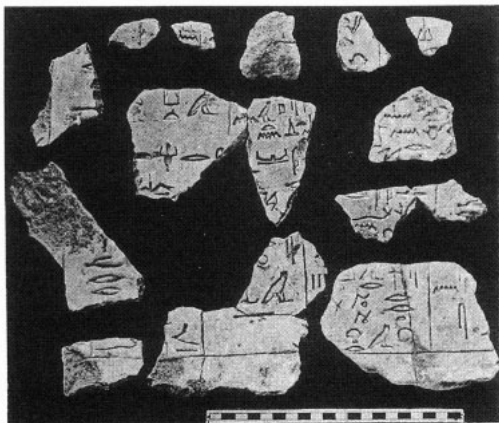
e.



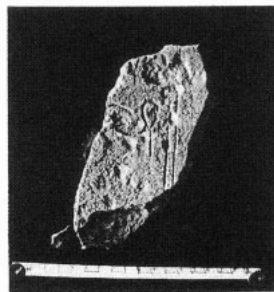
d. M. P. T., limestone stela from entrance.



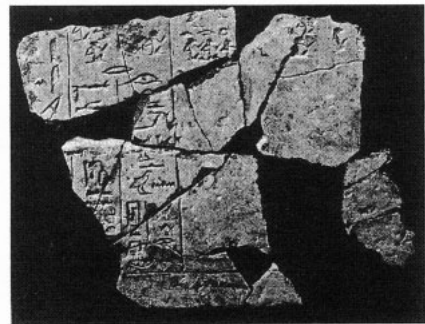
f.



g.

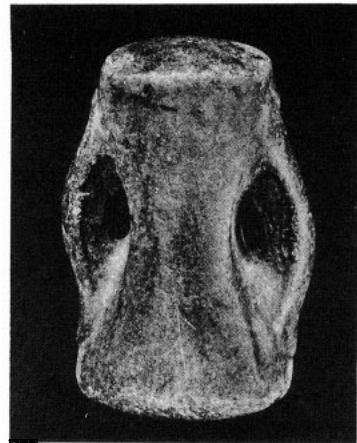
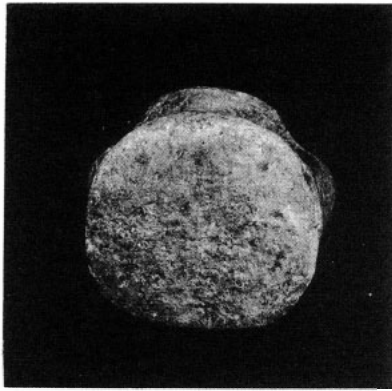


h.

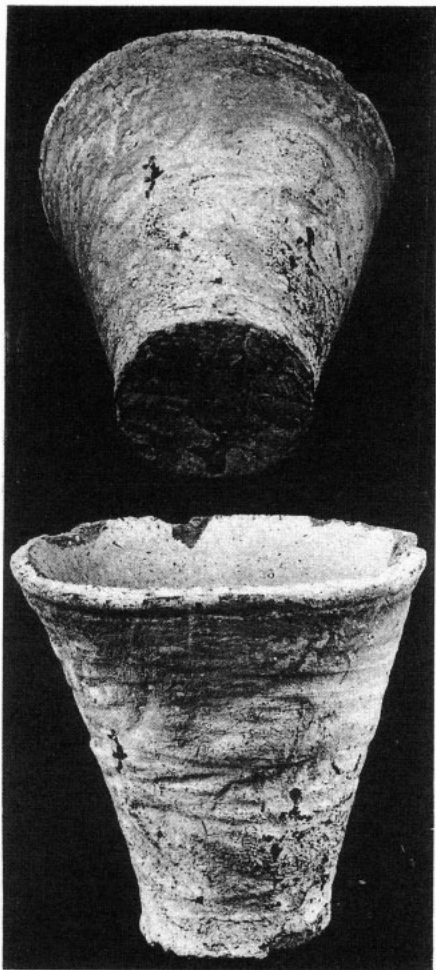


i.

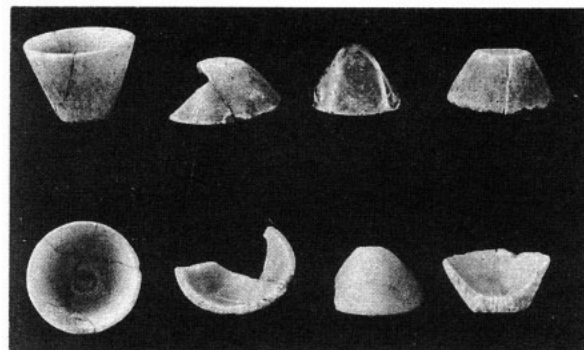
e.-i. M. P. T., fragments of limestone stelae from portico (7).



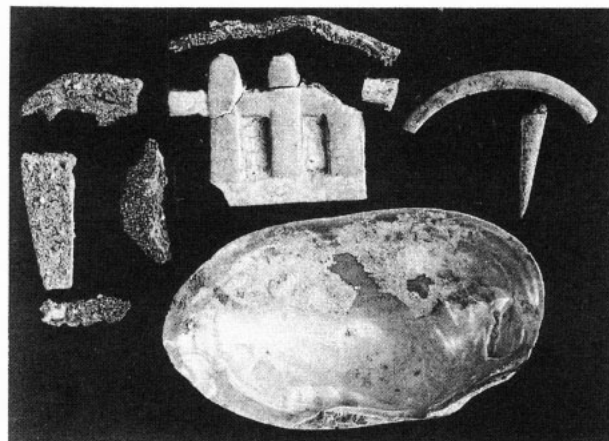
a.-c. M. P. T., black granite hammer from magazine (17).



d.-e. M. P. T., pot, type XXV, from room (36).



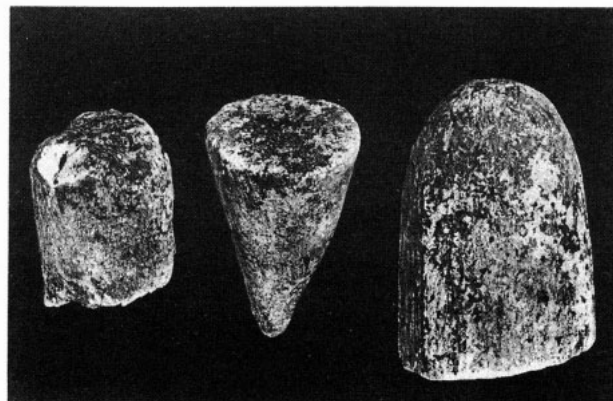
g. M. P. T., models, alabaster and crystal.



h. M. P. T., copper, faience, and shell.



f. M. P. T., models, pottery, types R. W. XLIII, XLIV, from room (18).



i. M. P. T., plaster cones from magazine (16) and (18).