



a. M. V. T., court, N. W. quarter, house walls over court and western wall of court, looking west, January 26, 1910.



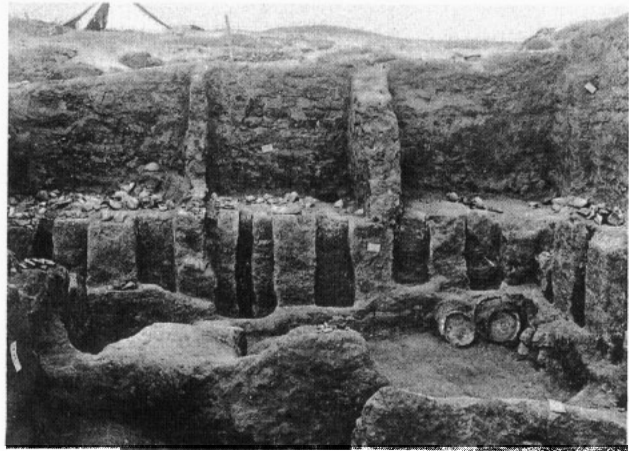
b. M. V. T., court, N. W. quarter, looking west, after partially exposing older niched wall, February 7, 1910.



c. M. V. T., court, N. W. quarter, niched wall of court, looking west, February 17, 1910.



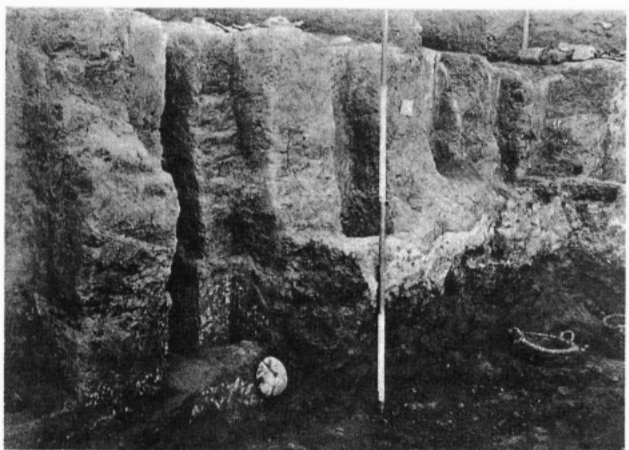
a. M. V. T., room (I-23), decayed arm of wooden statue in debris, looking N. E., January 20, 1910.



b. M. V. T., court, N. W. quarter, pottery on floor of (I-57-b), looking west, February 5, 1910.



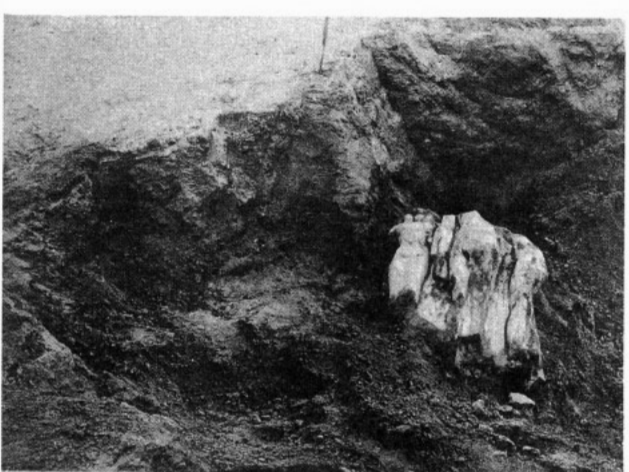
c. M. V. T., court, granaries (40), (43), (53), (54), (55), looking east, February 15, 1910.



d. M. V. T., court, (I-57-sub), plaster on niched wall and alabaster jar thrown out of magazines, looking north, February 10, 1910.



e. M. V. T., court, N. W. quarter, same stage as 31-c, February 13, 1910.



f. M. V. T., shattered triad (No. 13), as found in debris of court, looking east, January 19, 1910.



a. Mycerinus Valley Temple, court, southern half, looking east, March 5, 1910.



b. Mycerinus Valley Temple, court, looking north, March 11, 1910.

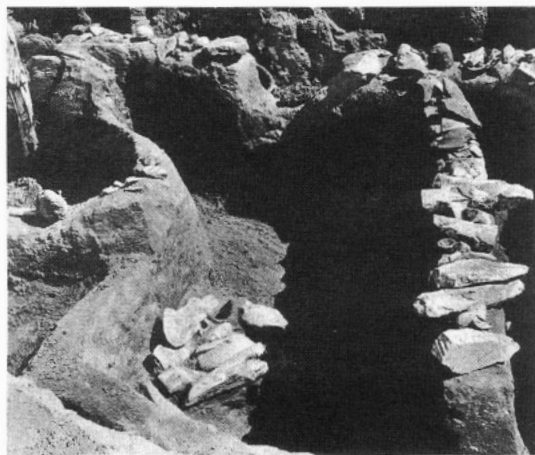




a. M. V. T., room (I-302 sub), pottery on floor of court, looking down east, February 26, 1910.



b. M. V. T., court, middle drain basin and pathway, looking west, March 9, 1910.



c. M. V. T., room (I-320), fragments of large alabaster statues under floor, looking south, February 28, 1910.



d. M. V. T., vestibule, ante room (III-377), limestone decree of Pepy II, looking east, March 24, 1910.



e. M. V. T., vestibule, northern magazine corridor, (III-380), stair, looking north, April 1, 1910.



f. M. V. T., court N. E. quarter, looking north, April 1, 1910.



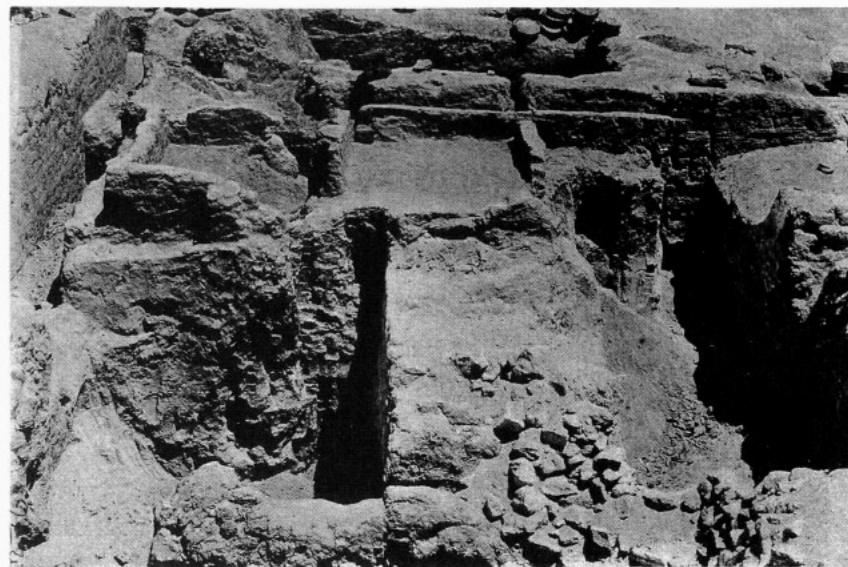
a. Mycerinus Valley Temple, vestibule and houses east of temple, before removing wall of vestibule of Second Temple, looking N. N. W., March 15, 1910.



b. Mycerinus Valley Temple, same as a, after removing wall of vestibule of Second Temple, March 15, 1910.



a. M. V. T., corridor (4), the four triads as found, looking north, July 10, 1908.

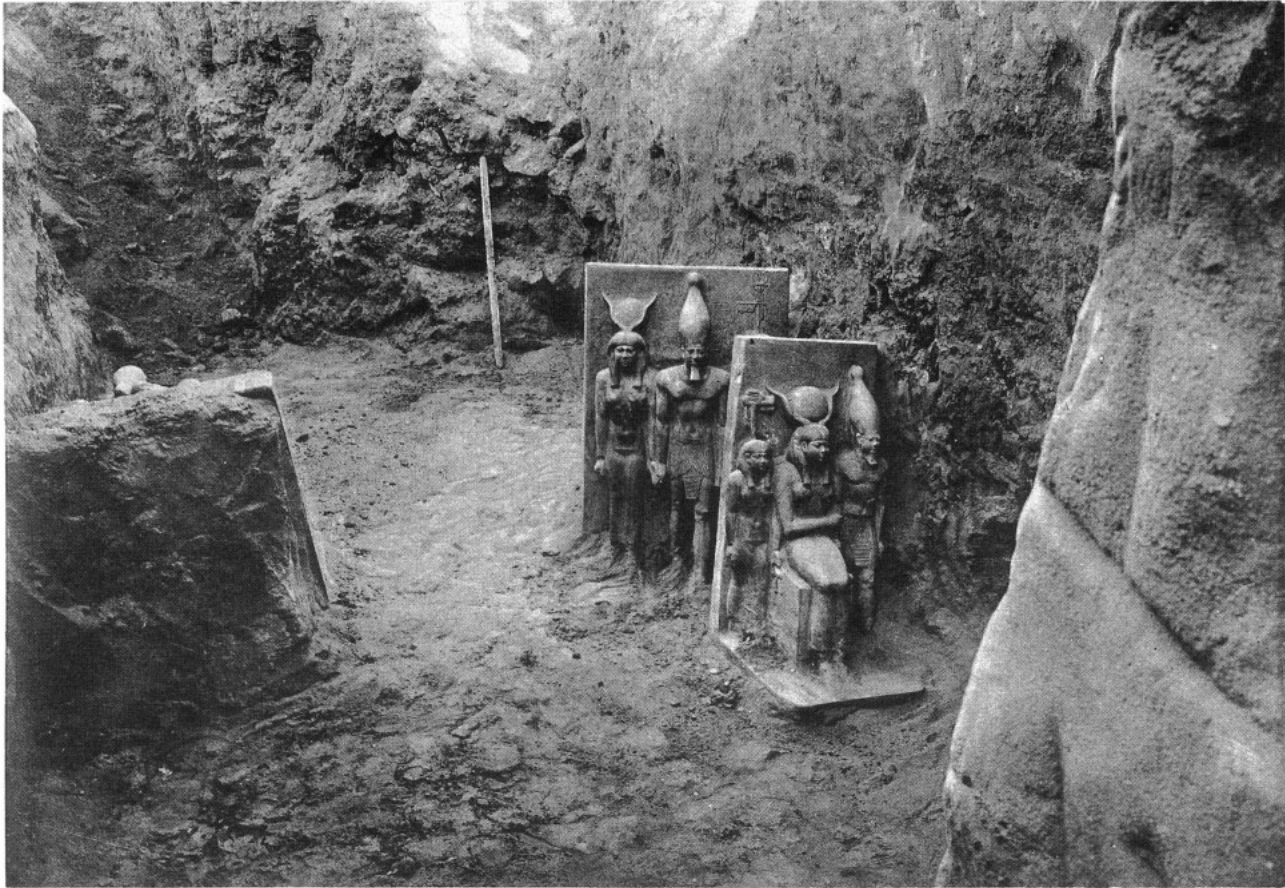


b. M. V. T., later house walls above (III-4), (III-5), and (III-17), looking north, July 11, 1908.



c. M. V. T., corridor (4), triads Nos. 9 and 12, partly exposed, looking down to S. W., July 10, 1908.

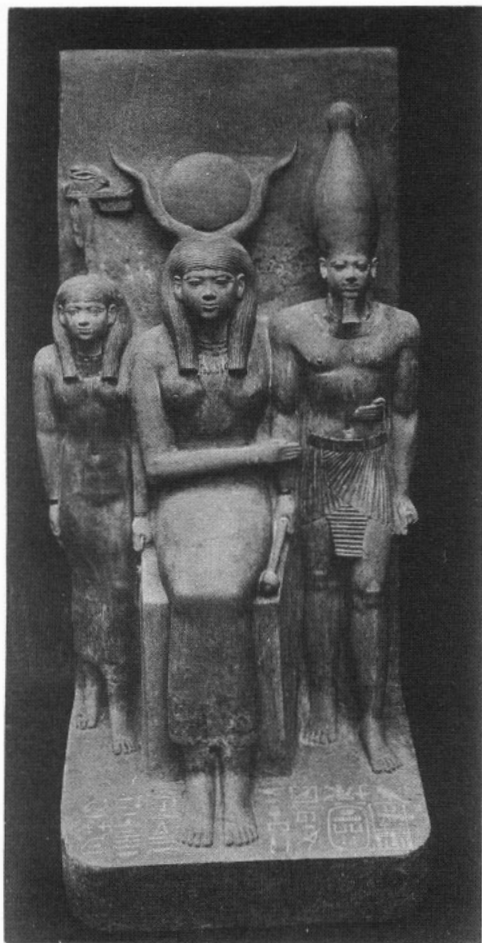




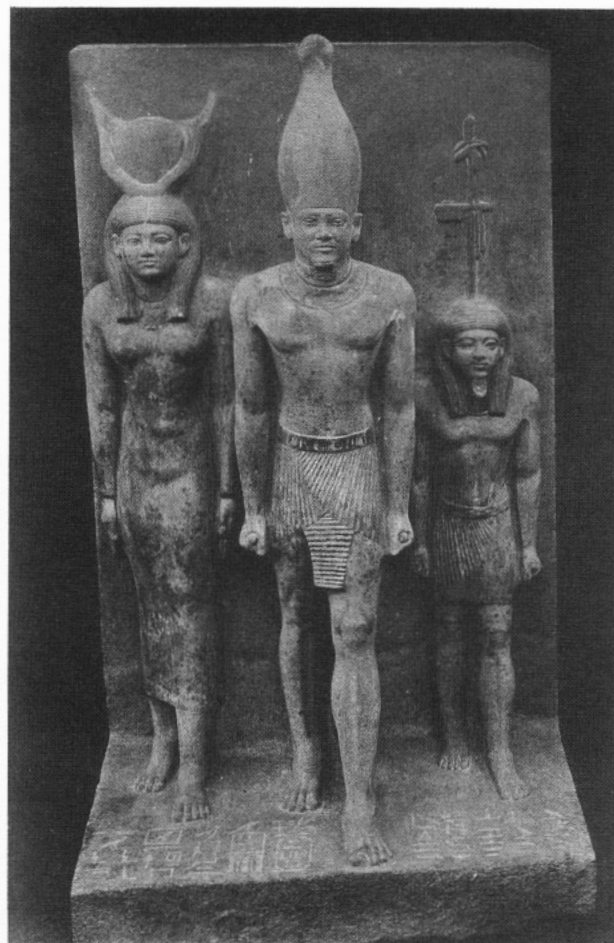
a. M. V. T., corridor (4), triads No. 9 (in front) and No. 12 on right, looking south, July 12, 1908.



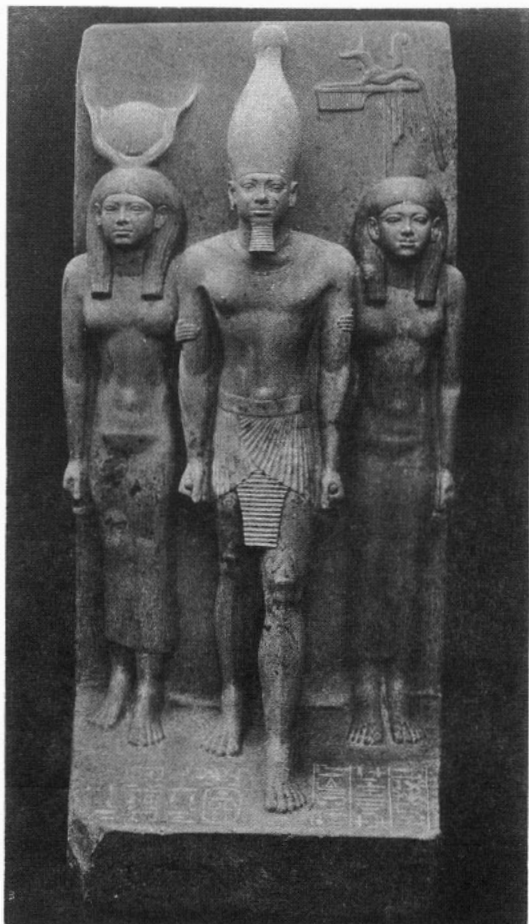
b. M. V. T., corridor (4), triads No. 10 (behind) and No. 11 on right, looking north, July 11, 1908.



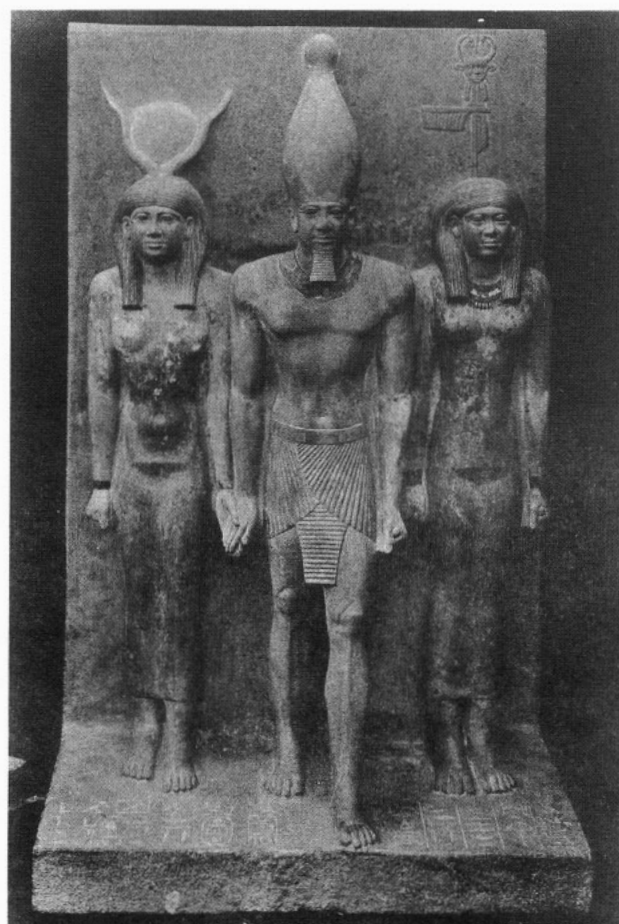
a. M. V. T., nome-triad No. 9, front view.



b. M. V. T., nome-triad No. 10, front view.

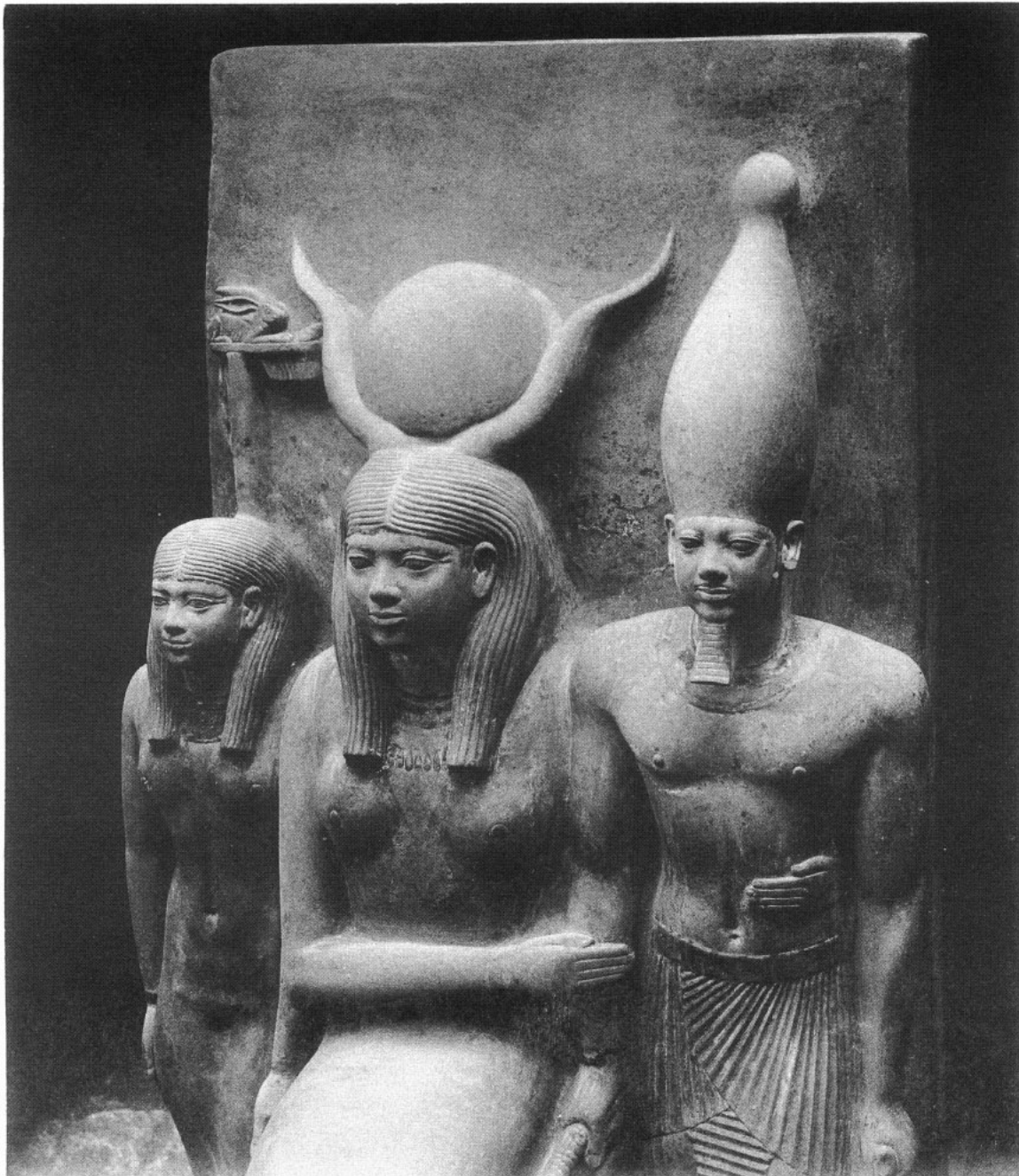


c. M. V. T., nome-triad No. 11, front view.

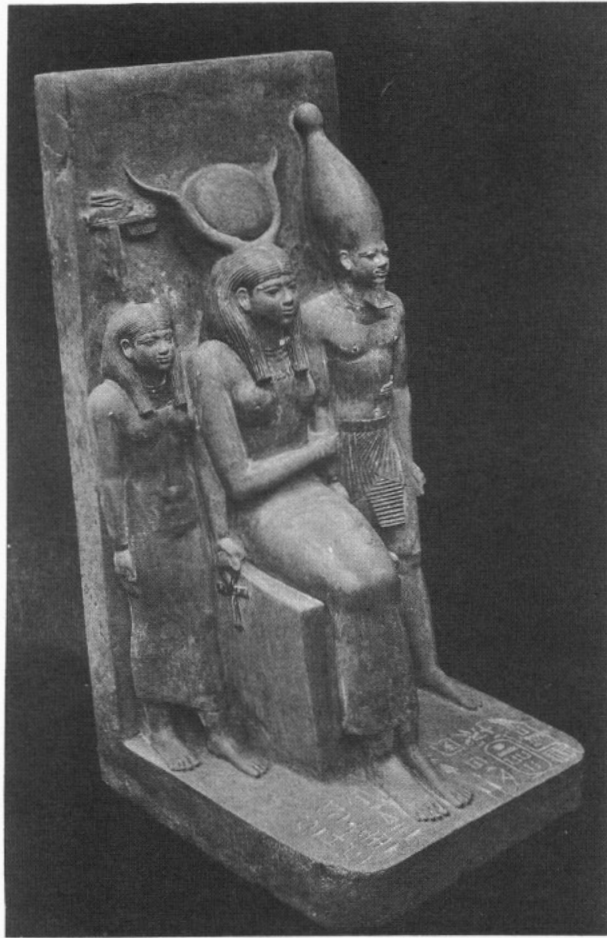


d. M. V. T., nome-triad No. 12, front view.

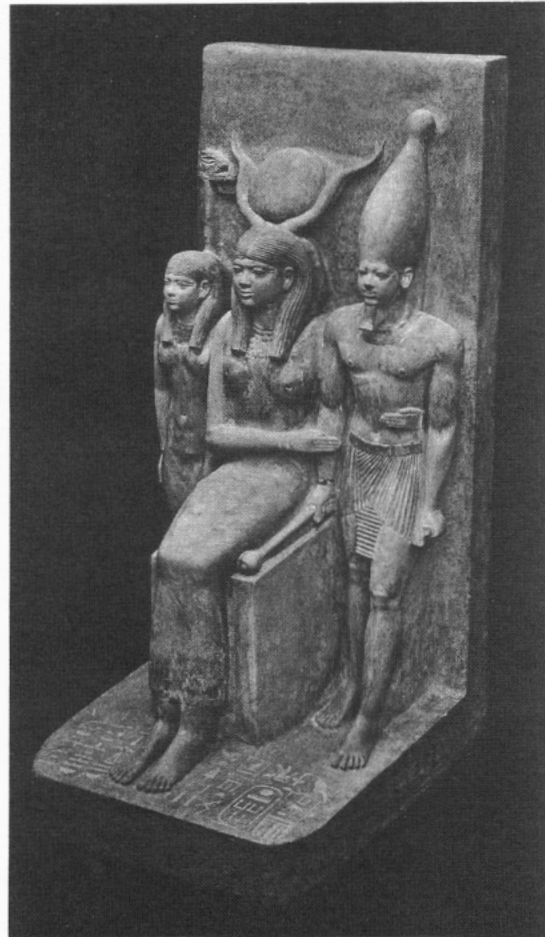




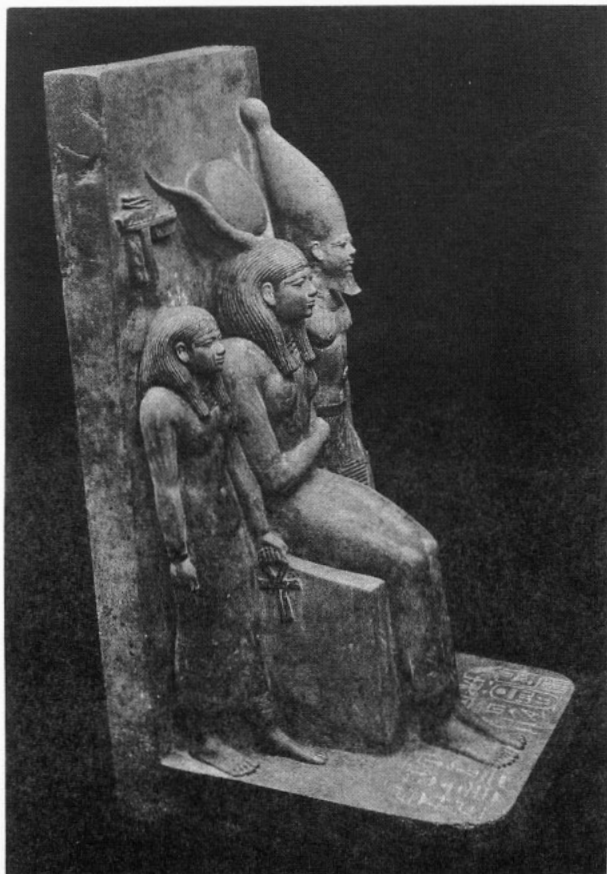
M. V. T., triad of the Hare-nome (No. 9), upper part.



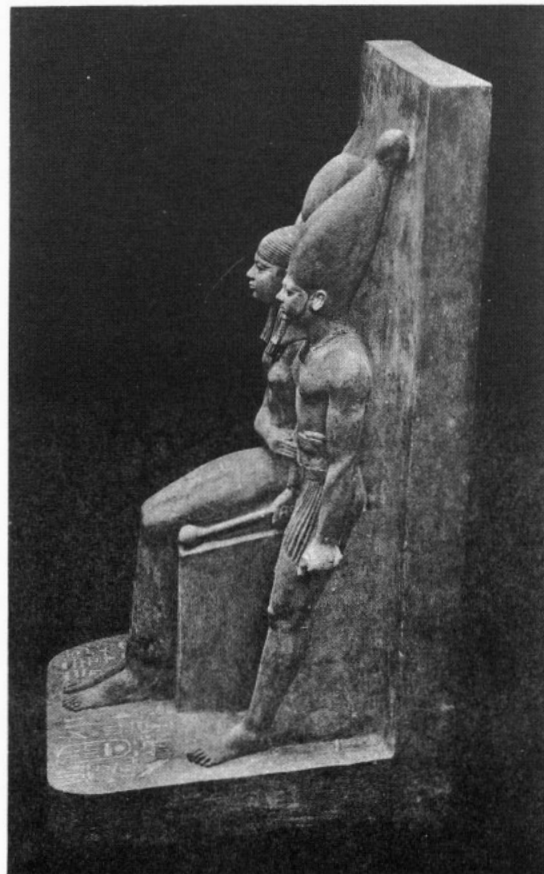
a. M. V. T., triad No. 9, right side, half view.



b. M. V. T., triad No. 9, left side, half view.



c. M. V. T., triad No. 9, right side, three quarters view.



d. M. V. T., triad No. 9, left side, profile.

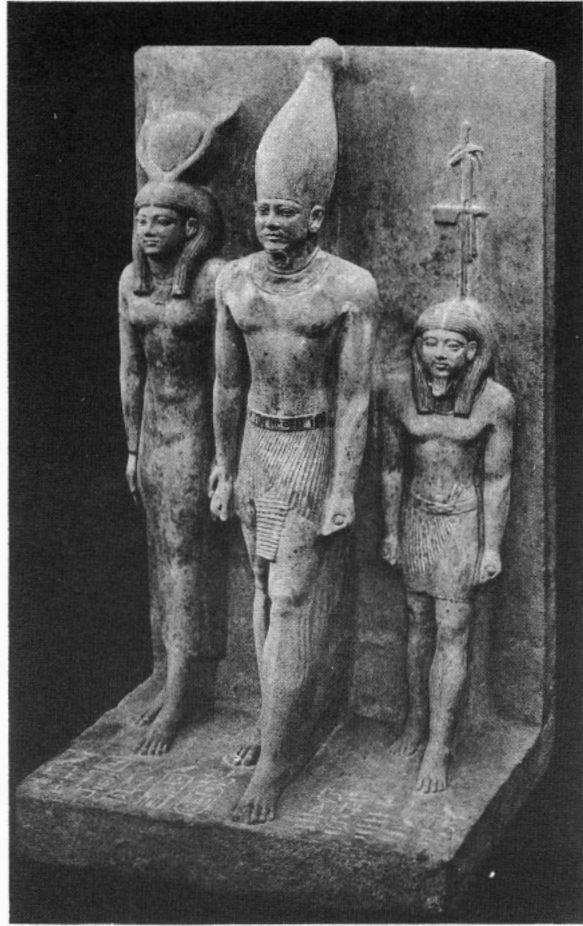


M. V. T., triad of the Theban Nome (No. 10).

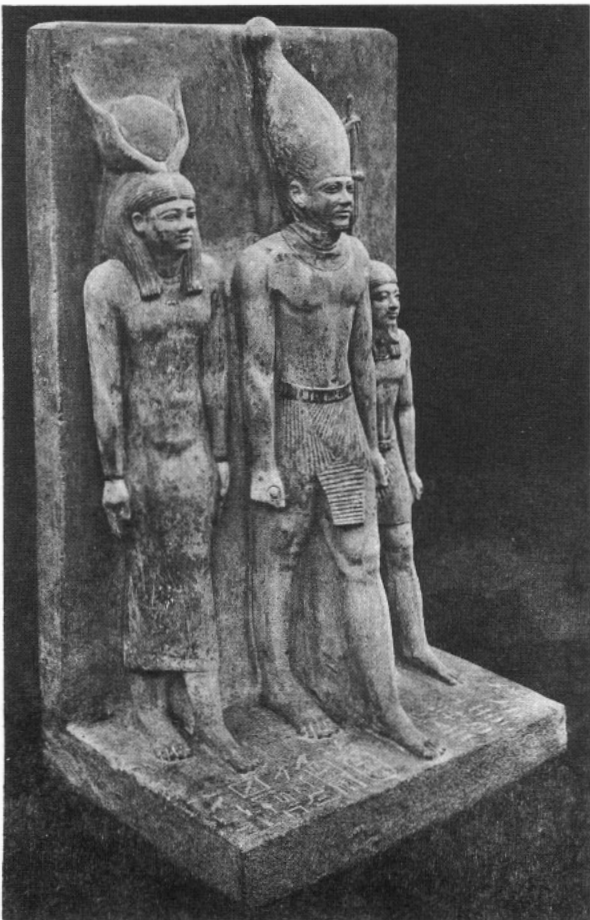




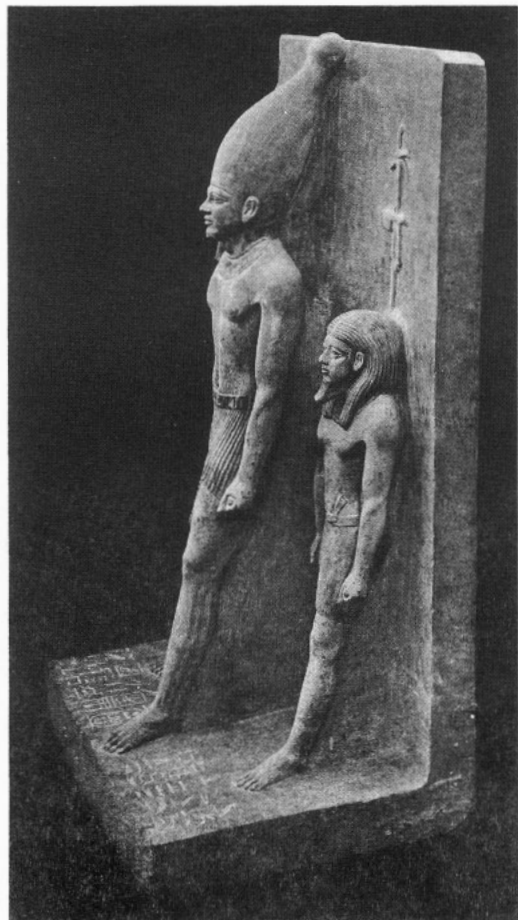
a. M. V. T., triad No. 10, right side, 1-4 view.



b. M. V. T., triad No. 10, left side, 1-4 view.



c. M. V. T., triad No. 10, right side, half view.



d. M. V. T., triad No. 10, left side, profile.